

Unsuccessful MVCI connection – February 2019 – Help requested please

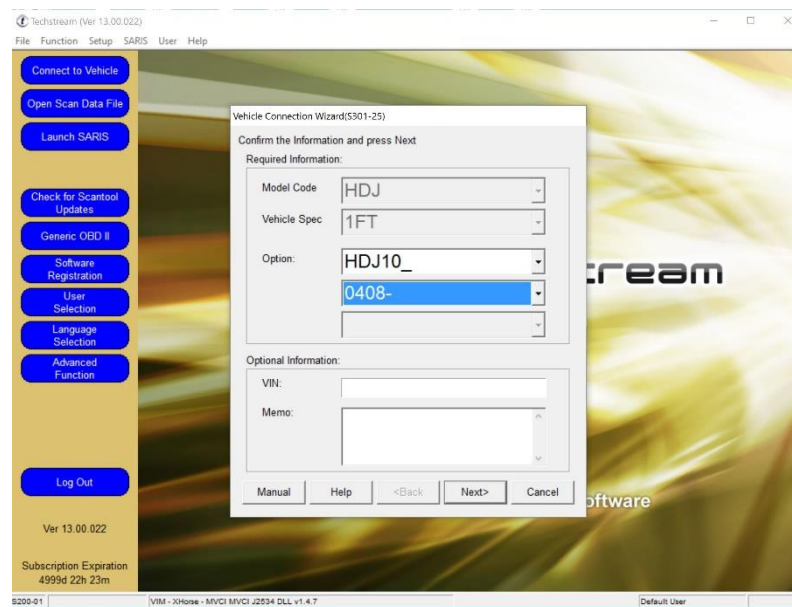
Microsoft Surface Laptop with Windows 10 x64bit with common MVCI connector on Toyota Landcruiser HD100R Sahara with AHC and 1HD-FTE turbodiesel

- Manufactured in Japan **June 2006**, delivered and registered in Australia **July 2006**

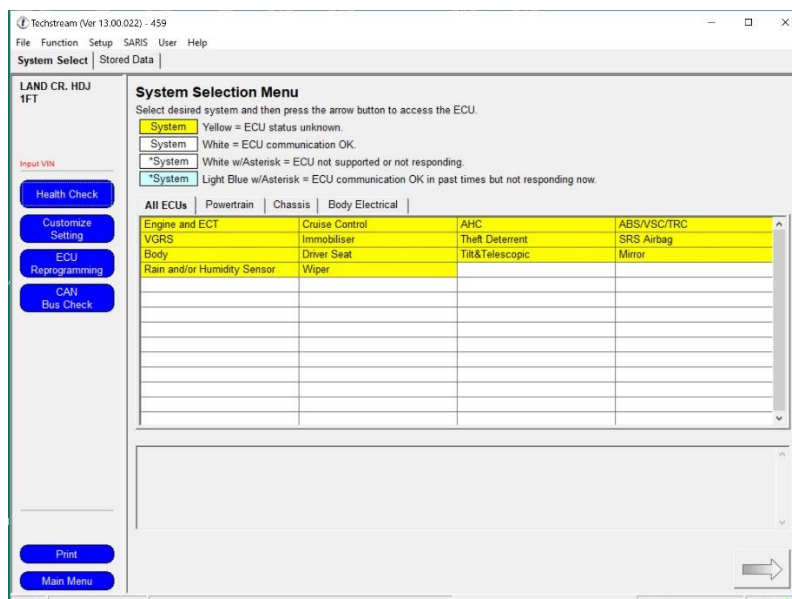


Near brake pedal -- **Looks like OBD2 but could be MOBD????**

Engine Bay connector under “DIAGNOSTIC” cover



Seems correct if “0408-” means “up to April 2008”????



All “Yellow – ECU status unknown”????

