

Toyota

Contents

Turbo Model	Catalogue Contents	Page No.	Notes
	Toyota Applications List	1	
CT9	Repair Kits / Oversize Bearings & Piston Rings	5	Parts Added
CT9	Major Parts (Shaft Wheels)	6	UPDATED
CT12	Repair Kits / Oversize Bearings & Piston Rings	9	
CT12B	Repair Kits / Oversize Bearings & Piston Rings	13	
CT12B	Major Parts (Shaft Wheels , Comp Wheels)	14	
CT12B	Turbine Housing	15	
CT20	Dynamic Seal Repair Kits & Oversize Parts	19	
CT20	Carbon Seal Repair Kits & Oversize Parts	21	
CT20	Major Parts (Shaft Wheels , Comp Wheels)	22	
CT20	Turbine Housings	23	
CT26 Small	Repair Kits & Oversize Parts	27	NEW
CT26 Small	Major Parts (Shaft Wheels , Comp Wheels)	28	NEW
CT26	Dynamic Seal Repair Kits & Oversize Parts	31	
CT26	Carbon Seal Repair Kits & Oversize Parts	33	
CT26	Major Parts (Shaft Wheels , Comp Wheels)	34	
CT26	Turbine Housings and Bearing Housings	35	

Toyota Turbo's Applications List

Whilst every effort has been made to prove the accuracy of the information in this list, Toyota applications and part numbers can vary from country to country. Melett thanks it's customers for the valuable contributions already made to help produce this list. If you have further information or would like to update this list by filling in the missing information, please fax or email Melett at the above contact details.

Vehicle Model	Model Code	Year	Engine	OE Turbo No.	T/Hsg Casting No.	Turbo Model
4-Runner	KZN130	93-96	3.0 TD	17201-67010	67010	CT12B
Avensis	CDT 220	99-	2.0 TD 4	17201-27010	IHI	RHF4
Avensis	CT 220	97-00		17201-64110	64060	CT12
Avensis	CT 220	97-00		17201-64150	64060	CT12
Avensis	CLM 20	01-		17201-06010	Garrett	GT1749V
Avensis Verso	CLM 20	01-		17201-27030	Garrett	GT1749V
Camry	CV10	84-85	1,8 TD 4	17201-64010		CT20
Camry	CV11/20	85-88	2,0 TD 4	17201-64020		CT20
Camry Nato	CV20	88-91	2,0 TD 4	17201-64040		CT12
Carina E	CT190	96-97	2,0 TD 4	17201-64110	64040	CT9
Cataneo Coach	15B-FTE	95-	4.1 TDI 4	17201-58040	58030	CT12B
Celica	ST165	87-89	2,0 TPI 4	17201-74010	74010	CT26
Celica	ST185	89-94	2,0 TPI 4	17201-74020/30	74020	CT26
Celica	ST205	94-96	2,0 TPI 4	17201-74080	74040	CT20B
Corolla	CDE 110	00-	2,0 TD 4	17201-27020		
Corolla	CDE 120	01-	2,0 TD 4	17201-27050	IHI	VB10
Corolla	CDE 120 HO	02-	2,0 TDI 4	17201-27060		
Coaster/Optimo	HBD 30	90-93	4,2 TD 6	17201-17010	58020	CT26
Coaster/Optimo	HZB 50	93-96	4,0 TD 6	17201-17020	58020	CT26
Coaster/Optimo	BB 50-43-50-58	96-	4,1 TDI 4	17201-58040	58030	CT
Coaster/Optimo	BB 5#	99-	4,1 TDI 4	17201-58070		CT26
Coaster/Optimo	HBD 31	86-90	4,0 TD 6	17201-68010	58010	CT26
Corrola Verso	CDE 120	01-	2,0 TD 4	17201-27050	IHI	VB10
Cressida	LX7#	84-86	2,4 TD 4	17201-54011		
Hiace	KDY 220-230	01-	2,5 TDI 4	17201-30020		
Hiace	KLH ½	01-	2,5 TD 4	17201-30030		CT9
Hiace	LXH12	95-98	2,4 TD 4	17201-54060	54030	CT
Hiace	LXH12	98-01	2,4 TD 4	17201-54090	50404	CT
Hiace	BU 212 RHD+ 102-142-222	96-	4,1 TDI 4	17201-58040	58030	CT12B
Hiace	BU 212 LHD+BU222	95-	4,1 TDI 4	17201-58050		
Hiace Dyna	XZU 300- 320 –330-340	99-	4,1 TDI 4	17201-58060	IHI	RHF5F
Hiace	BU 213 – 223	99-	4,1 TDI 4	17201-58060	IHI	RHF5F
Hiace	XZU 404-414- 424-434	01-		17201-78010		
Hiace	250-260					
Landcruiser	HDJ80/81	90-95	4,2 TD 6	17201-17010	58020	CT26
Landcruiser	HDJ82	95-98	4,2 TD 6	17201-17030	17010	CT26
Landcruiser	1HD-FTE	98-	4,2 TDI 6	17201-17040	17020	CT26
Landcruiser	HDJ100	01-	4,2 TDI 6	17201-17050		

Toyota Turbo's Applications List

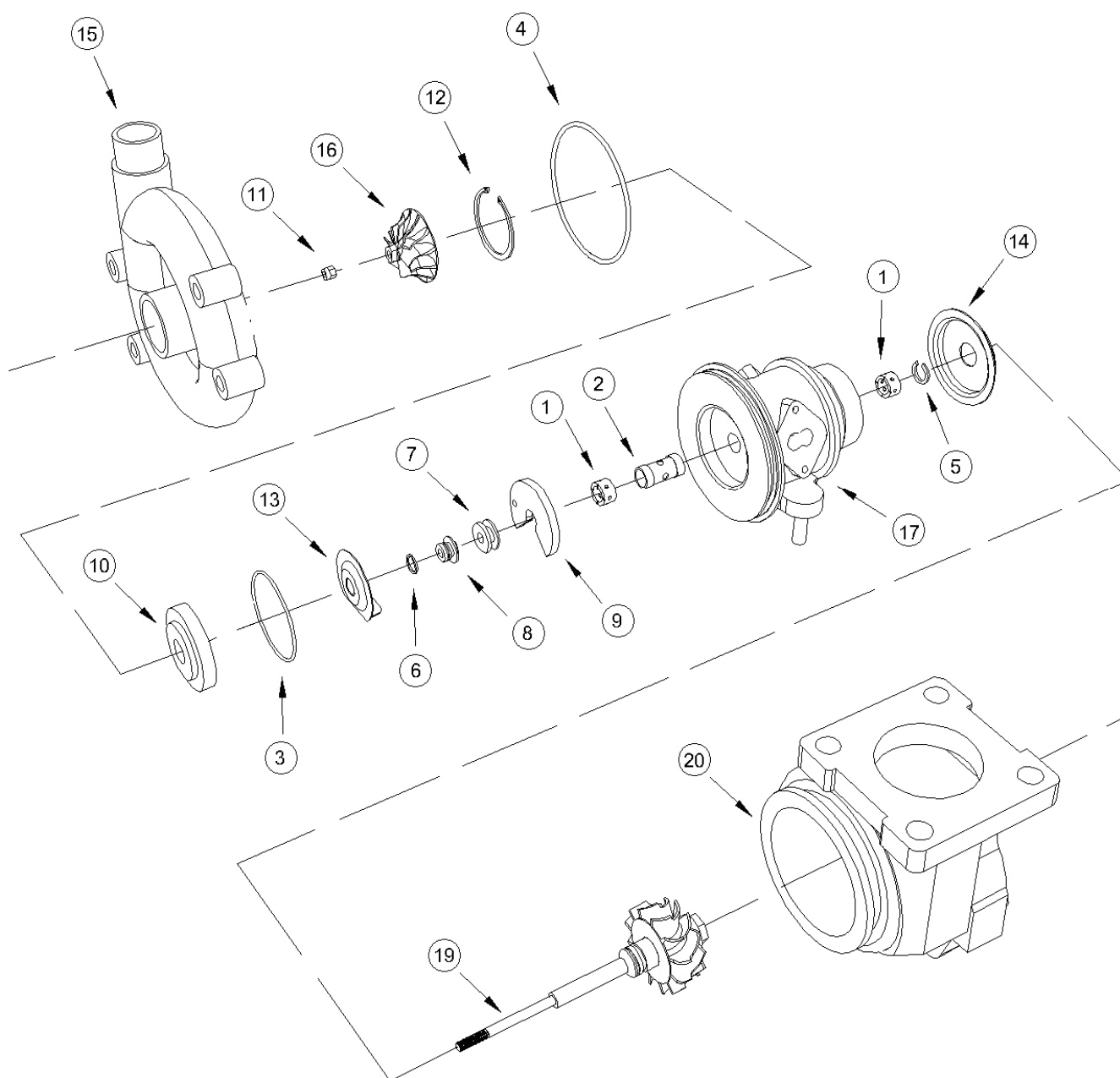
Vehicle Model	Model Code	Year	Engine	OE Turbo No.	T/Hsg Casting No.	Turbo Model
Landcruiser	KDJ90/95	00-	3,0 TDI 4	17201-30010		
Landcruiser	HL KDN 14-17/19	01-	2,5 TD 4	17201-30030		CT9
Landcruiser	LJ70	84-90	2,4 TD4	17201-54030	54010	CT20
Landcruiser	4R LN 130	90-95	2,4 TD 4	17201-54060	54030	CT20
Landcruiser	LJ70/73	90-98	2,4 TD 4	17201-54060	54030	CT20
Landcruiser	HL LN16/17	97-98	2,4 TD 4	17201-54060	54030	CT20
Landcruiser	HL LN16/ 17/ 19	98-01	2,4 TD 4	17201-54090	54040	CT9
Landcruiser	BJ7	85-90	3,4 TD 4	17201-58011		
Landcruiser	KZJ70	93-96	3,0 TD 4	17201-67010	67010	CT12B
Landcruiser	4R KZN 130	93-95	3,0 TD 4	17201-67010	67010	CT12B
Landcruiser	KZJ90/95	96-00	3,0 TD 4	17201-67010	67010	CT12B
Landcruiser	KZJ90/95	00-	3,0 TD 4	17201-67040		CT12B
Landcruiser	HJ 61	85-90	4,0 TD 6	17201-68010		CT26
MR2	ST185	89-93	2,0 TPI 4	17201-74030	74020	CT26
MR2	SW20	89-99	2,0 TPI 4	17201-74060	74040	CT26
MR2	AW11	87-89	1,6 SPI 4	17620-16010		
Picnic	CLM20	01-	2,0 TDI 4	17201-27030	Garrett	VNT1749
Picnic	CXM10	97-01	2,2 TD 4	17201-64170		
Previa	CLR30	01-	2,0 TDI 4	17201-27030	Garrett	VNT1749V
Previa				17201-64030	64030	CT9
RAV 4	CLA2#	01-	2,0 TDI 4	17201-27040		
Soara (Lexus)			3.0 L	17201-70020		CT12
Soara (Lexus)			3.0 L	17208-70020		CT12
Soara (Lexus)			3.0 L	17201-70030		CT12
Soara (Lexus)			3.0 L	17208-70030		CT12
Soara (Lexus)			3.0 L	17201-46010		CT12
Soara (Lexus)			3.0 L	17208-46010		CT12
Supra	MA70	87-88	3,0 TPI 6	17201-42020	42010	CT26
Supra (Twin Turbo)	JZA80	93-96	3,0 TPI 6	17201-46030	46030	CT20
Supra (Twin Turbo)	JZA80	93-96	3,0 TPI 6	17208-46030	46020	CT20
Yaris	NLP 10	01-	1,3 TDI 4	17201-33010		
Yaris Verso	NLP 20	01-	1,3 TDI 4	17201-33010		

Toyota CT9 Type Turbos

Common Service Parts
Oversize Service Parts

Toyota CT9

Common Service Parts



Toyota CT9

Repair Parts & Service Kits

All parts are available for purchase as individual components or in the following popular Repair Kits

Key	Part Description	Melett Part Number	Qty Per Turbo	Minor Kit (Dynamic) 1500-309-750	Major Kit (Dynamic) 1500-309-751
1	Journal Bearing (Std)	1500-309-100	2	2	2
2	Bearing Spacer Sleeve	N/A	1		
3	"O" Ring (Insert)	1500-309-150	1	1	1
4	"O" Ring (B/Hsg-C/Hsg)	1500-312-155	1	1	1
5	Piston Ring (Turb)	1500-312-160	1	1	1
6	Piston Ring (Comp)	1500-312-170	1	1	1
7	Thrust Flinger	1500-309-200	1		1
8	Thrust Spacer	1500-309-240	1		1
9	Thrust Bearing	1500-312-320	1	1	1
10	Insert / Seal Plate ø45mm	1500-309-300	1		1
11	Shaft nut	1500-313-351	1	1	1
12	Retaining Circlip (Seal Plate)	N/A	1		
13	Oil Deflector	N/A	1		
14	Heat Shield	N/A			
-	Gasket – Oil Inlet / Outlet	1500-320-790	1	1	1
-	Gasket – Water	1500-320-791	2	2	2

Oversize Repair Parts Available

Journal Bearings		
Oversize's Available		Part Number
OD +.005"	ID -.005"	1500-309-110
OD +.005"	ID Std	1500-309-114
OD Std	ID -.005"	1500-309-117
OD +.010"	ID Std	1500-309-124

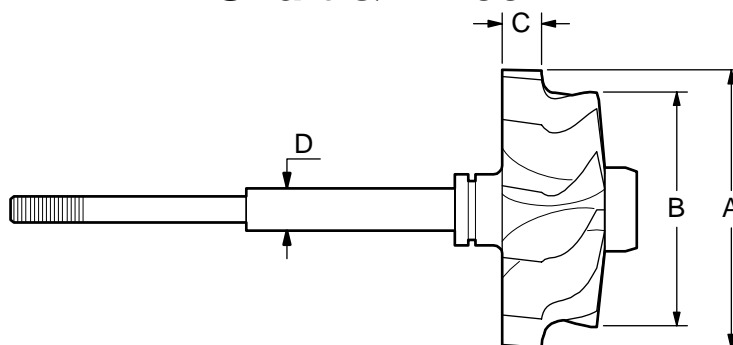
Piston Rings		
Oversize's Available		Part Number
Turbine End		
OD +.010	Wth Std	1500-312-180
Std	Wth +O.010	1500-312-181

Toyota CT9

Major Replacement Parts

Melett currently offers the following major replacement parts for the CT9 Previa turbo. Dimensions given are for identification purposes only.

Shaft & Wheel



Melett Part No.	A (Inducer OD)	B (Exducer OD)	C (Tip width)	D (Shaft OD)
1500-309-435	46.0	36.0	7.0	7.5

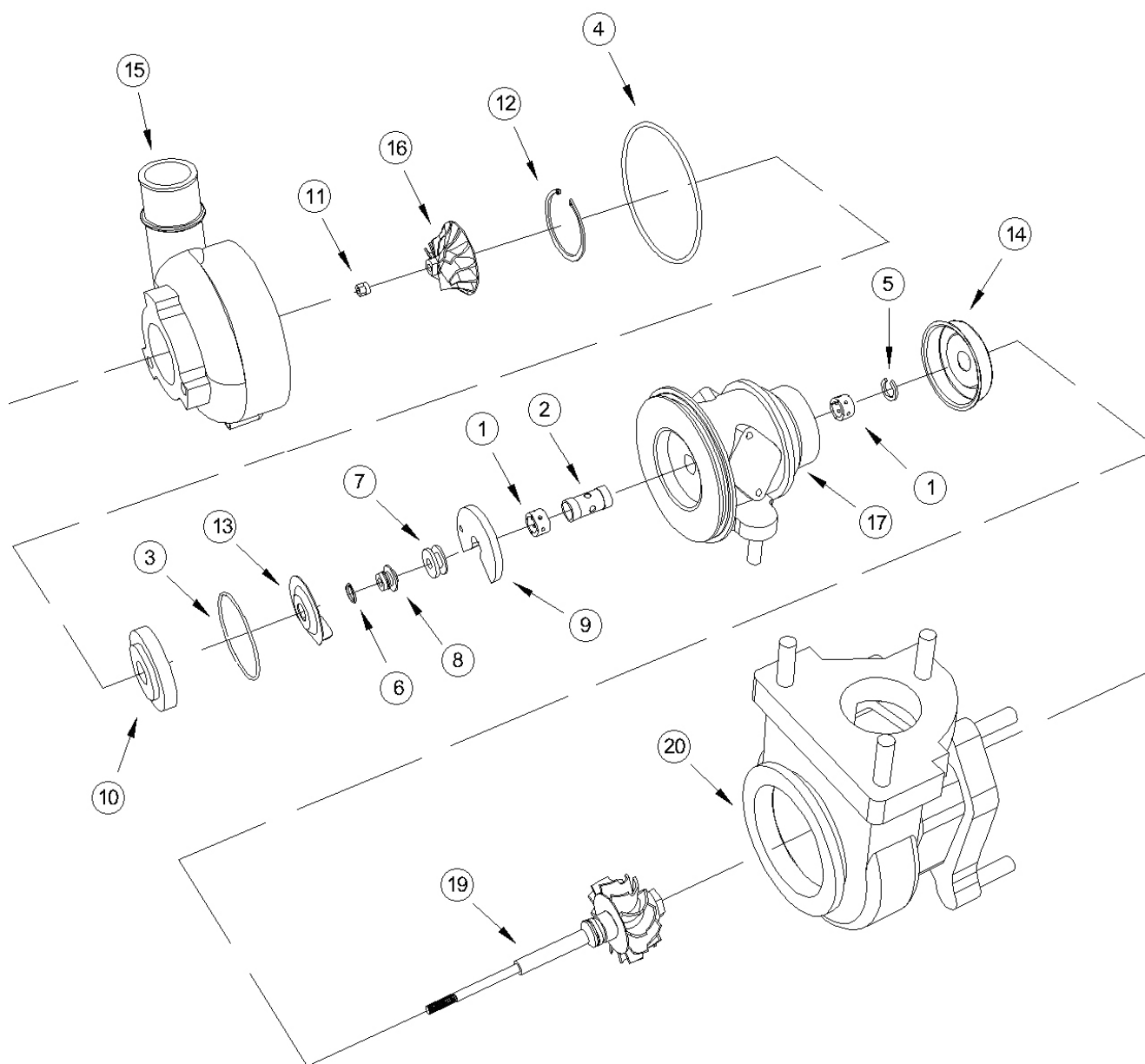
Melett's fully qualified Engineers are available to answer any technical enquiry regarding limits, tolerances, and turbo set-up configurations. Email: Engineer@melett.com

Toyota CT12 Type Turbos

Common Service Parts
Oversize Service Parts

Toyota CT12

Common Service Parts



Toyota CT12

Repair Parts & Service Kits

All parts are available for purchase as individual components or in the following popular Repair Kit

Key	Part Description	Melett Part Number	Quantity Per Turbo	Minor Kit (Dynamic) 1500-312-750
1	Bearing (Std)	1500-312-100	2	2
2	Bearing Spacer Sleeve	N/A	1	
3	"O" Ring (Insert)	1500-309-150	1	1
4	"O" Ring (B/Hsg-C/Hsg)	1500-312-155	1	1
5	Piston Ring (Turb)	1500-312-160	1	1
6	Piston Ring (Comp)	1500-312-170	1	1
7	Thrust Flinger	N/A	1	
8	Thrust Spacer	N/A	1	
9	Thrust Bearing (270 degree)	1500-312-320	1	1
10	Insert / Seal Plate	1500-312-300	1	
11	Shaft nut M5.5 x 0.5 LHT	1500-312-351	1	1
12	Retaining Circlip (Seal Plate)	N/A	1	
13	Oil Deflector	N/A	1	
14	Heat Shield	N/A		
-	Gasket – Oil Inlet / Outlet	1500-320-790	1	1
-	Gasket – Water	1500-320-791	2	2

Oversize Repair Parts Available

Journal Bearings		
Oversize's Available		Part Number
OD +.005"	ID -.005"	1500-312-110
OD +.005"	ID Std	1500-312-114
OD Std	ID -.005"	1500-312-117
OD +.010"	ID Std	1500-312-124

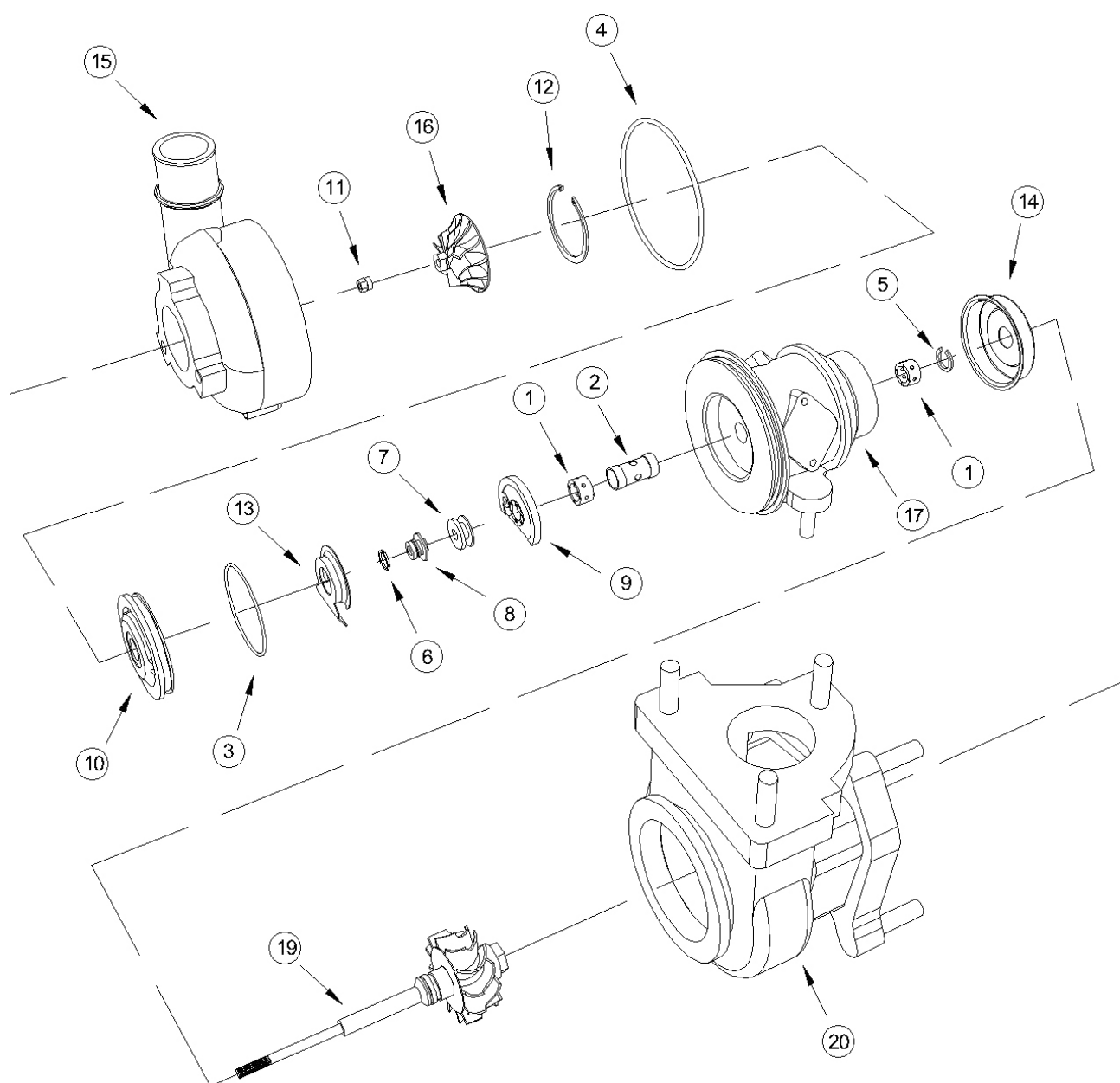
Piston Rings		
Oversize's Available		Part Number
Turbine End		
OD +.010	Wth Std	1500-312-180

Toyota CT12B Type Turbos

Common Service Parts
Oversize Service Parts
Major Service Parts
(Shaft & Wheels, Compressor Wheels)
Turbine Housing

Toyota CT12B

Common Service Parts



Toyota CT12B

Repair Parts & Service Kits

All parts are available for purchase as individual components or in the following popular Repair Kits

Key	Part Description	Melett Part Number	Quantity Per Turbo	Minor Kit (Dynamic) 1500-313-751	Major Kit (Dynamic) 1500-313-752
1	Bearing (Std)	1500-313-100	2	2	2
2	Bearing Spacer Sleeve	1500-312-290	1		
3	"O" Ring (Insert)	1500-320-150	1	1	1
4	"O" Ring (B/Hsg-C/Hsg)	1500-313-155	1	1	1
5	Piston Ring (Turb)	1500-312-160	1	1	1
6	Piston Ring (Comp)	1500-312-170	1	1	1
7	Thrust Flinger	1500-313-200	1		1
8	Thrust Spacer	1500-313-240	1		1
9	Thrust Bearing	1500-313-320	1	1	1
10	Insert / Seal Plate	1500-313-300	1		
11	Shaft nut (M5 x 0.5 LHT)	1500-313-351	1	1	1
12	Retaining Circlip (Seal Plate)	N/A	1		
13	Oil Deflector	N/A	1		
14	Heat Shield	N/A	1		
-	Gasket – Oil Inlet / Outlet	1500-320-790	1	1	1
-	Gasket – Water	1500-320-791	2	2	2

Oversize Repair Parts Available

Journal Bearings		
Oversize's Available		Part Number
OD +.005"	ID -.005"	1500-313-110
OD +.005"	ID Std	1500-313-114
OD Std	ID -.005"	1500-313-117
OD +.010"	ID Std	1500-313-124
OD +.010"	ID -.005"	1500-313-131

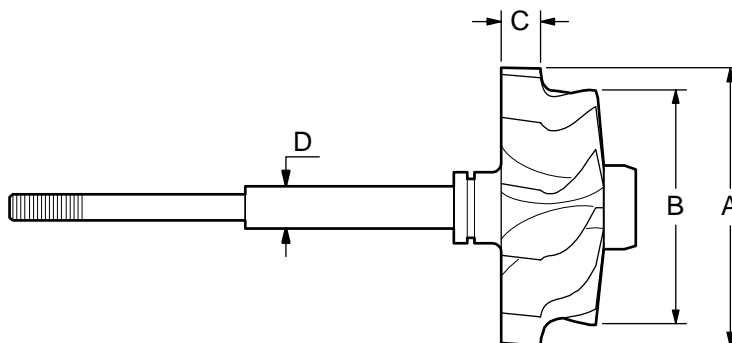
Piston Rings		
Oversize's Available		Part Number
Turbine End		
OD +.010	Wth Std	1500-312-180
OD Std	Wth +.010	1500-312-181

Toyota CT12B

Major Replacement Parts

Melett currently offers the following major replacement parts for the CT12B turbo. Dimensions given are for identification purposes only.

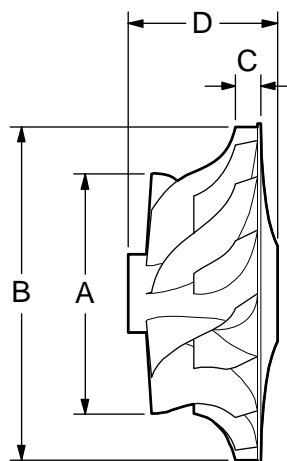
Shaft & Wheel



Melett Part No.	A (Inducer OD)	B (Exducer OD)	C (Tip width)	D (Shaft OD)
1500-313-435	52.0	44.0	6.8	7.5

Melett's fully qualified Engineers are available to answer any technical enquiry regarding limits, tolerances, and turbo set-up configurations. Email: Engineer@melett.com

Compressor Wheel



Melett Part No.	(A) Inducer ø mm's	(B) Full ø mm's	(C) Tip width mm's	(D) Total Hub Length
1500-313-400	43.1	58.0	5.6	28.3

Toyota CT12B

Major Replacement Parts

Turbine Housing



Make	Model	Engine Spec	To fit OE Turbo...	Weight	Melett Part No.
Toyota	Landcruiser 3.0L D	KZJ 67	17201-67010	2.7Kg	1500-313-820

Toyota CT20 Type Turbos

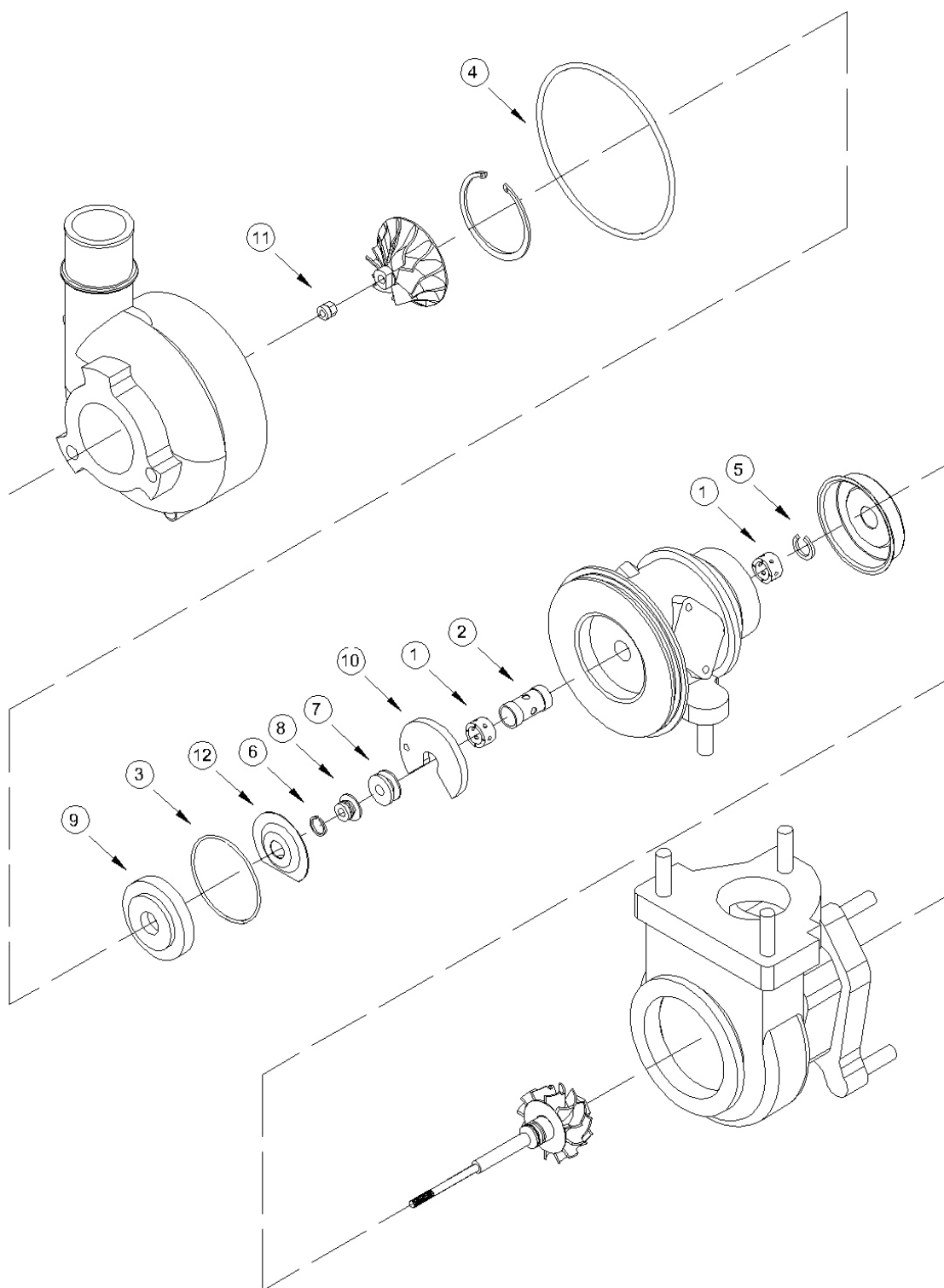
Dynamic & Carbon Seal

Common Service Parts
Oversize Service Parts
Major Service Parts
(Shaft & Wheels, Compressor Wheels)
Turbine Housing

Toyota CT20 Type

Dynamic Seal

Component Parts Common



Toyota CT20

Dynamic Seal

Repair Parts & Service Kits

All parts are available for purchase as individual components or in the following popular Repair Kits

Key	Part Description	Melett Part Number	Quantity Per Turbo	Minor Kit (Dynamic) 1500-320-750	Major Kit (Dynamic) 1500-320-753	CT20/CT26 Major Dynamic 1500-326-754
1	Journal bearing	1500-320-100	2	2	2	2
2	Bearing Spacer	1500-320-290	1			
3	"O"Ring Seal Plate	1500-320-150	1	1	1	1
4	"O"Ring Comp Cover CT20 (Ø104)	1500-320-155	1	1	1	1
4	"O"Ring Comp Cover CT20 (Ø114)	1500-320-156	1			
4	"O"Ring Comp Cover CT26 (Ø125)	1500-326-155	1			1
5	Piston Ring t/e	1500-320-160	1	1	1	1
6	Piston Ring c/e	1500-320-170	1	1	1	1
7	Thrust Collar (Std)	1500-320-200	1		1	1
8	Thrust Spacer (Dynamic)	1500-320-221	1		1	1
9	Seal Plate (Dynamic)	1500-320-301	1		1	1
10	Thrust Bearing	1500-320-320	1	1	1	1
11	Shaft Nut M6x1mm LHT	1500-320-351	1	1	1	1
12	Oil Deflector	1500-320-310	1			
-	Seal Plate Retaining Ring	1500-326-145	1			
	Gasket – Oil Inlet / Outlet	1500-320-790	1	1	1	1
	Gasket – Water	1500-320-791	2	2	2	2

Notes: 1) CT20 and CT26 repair kits are identical except for the Comp Cover O-ring – USE **1500-326-754** kit to repair both CT20/CT26 dynamic models from one kit.

Oversize Repair Parts Available

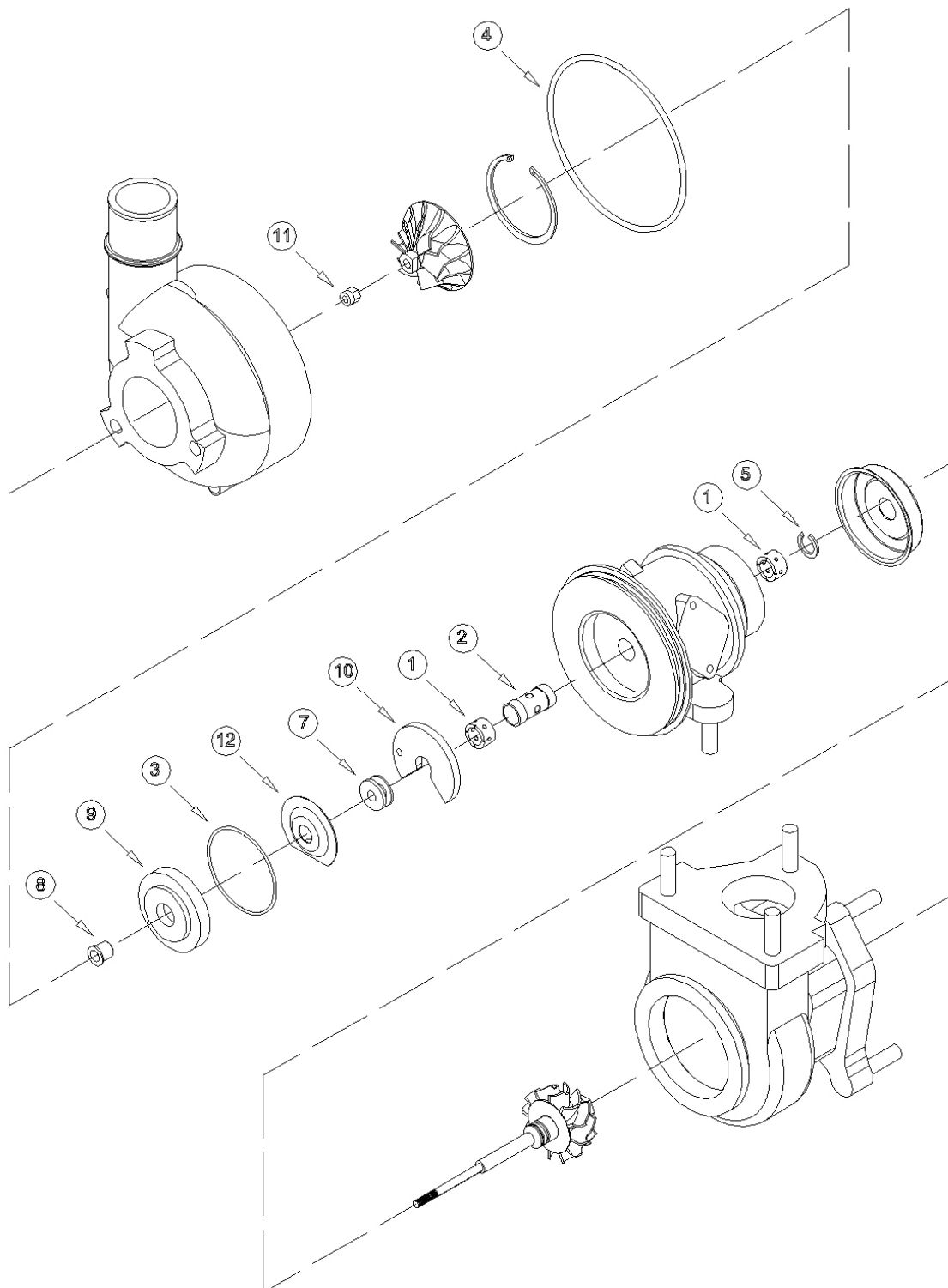
Journal Bearings		
Oversize's Available		Part Number
OD +.005"	ID -.005"	1500-320-110
OD +.005"	ID Std	1500-320-114
OD Std	ID -.005"	1500-320-117
OD +.010"	ID -.010"	1500-320-120
OD +.010"	ID Std	1500-320-124
OD Std	ID -.010"	1500-320-127
OD +.005"	ID -.010"	1500-320-130

Piston Rings		
Oversize's Available		Part Number
Available		
Turbine End		
OD +.010	Wth Std	1500-320-180
OD Std	Wth +.010	1500-320-181
OD +.010	Wth +.010	1500-320-182

Toyota CT20 Type

Carbon Seal

Component Parts Common



Toyota CT20

Carbon Seal

Repair Parts & Service Kits

All parts are available for purchase as individual components or in the following popular Repair Kits

Key	Part Description	Melett Part Number	Quantity Per Turbo	Minor Kit (Carbon) 1500-320-751	Major Kit (Carbon) 1500-320-752	Major Kit (54030 Only) 1500-320-754	CT20/CT26 Major Carbon 1500-326-755
1	Journal bearing	1500-320-100	2	2	2	2	2
2	Bearing Spacer	1500-320-290	1				
3	"O"Ring Seal Plate	1500-320-150	1	1	1	1	1
4	"O"Ring Comp Cover CT20 (Ø104)	1500-320-155	1	1	1		1
4	"O"Ring Comp Cover CT20 (Ø114)	1500-320-156	1		1		
4	"O"Ring Comp Cover CT26 (Ø125)	1500-326-155	1				1
5	Piston Ring t/e	1500-320-160	1	1	1	1	1
6	Piston Ring c/e	1500-320-170	1				
7	Thrust Collar (Std)	1500-320-200	1		1	1	1
8	Thrust Spacer (Carbon)	1500-320-220	1		1	1	1
9	Seal Plate (inc. Carbon Assy) 6.1mm Flange (Standard)	1500-320-300	1	1	1		1
9	Seal Plate (inc. Carbon Assy) 7.57mm Flange (for 54030 turbo)	1500-320-302	1			1	
10	Thrust Bearing	1500-320-320	1	1	1	1	1
11	Shaft Nut M6x1mm LHT	1500-320-351	1	1	1	1	1
-	Seal Plate Retaining Ring	1500-326-145	1				
	Gasket – Oil Inlet / Outlet	1500-320-790	1	1	1	1	1
	Gasket – Water	1500-320-791	2	2	2	2	2

Notes: 1) CT20 and CT26 repair kits are identical except for the Comp Cover O-ring – USE **1500-326-755** kit to repair both CT20/CT26 dynamic models from one kit.

2) For Pre 1990 CT20 Landcruiser 2.4L (17201-54030), the seal plate flange is deeper (**Part No. 1500-320-302**) and the O-ring groove is Ø114mm in the comp cover rather than Bearing housing. Use kit **1500-320-754**.

Oversize Repair Parts Available

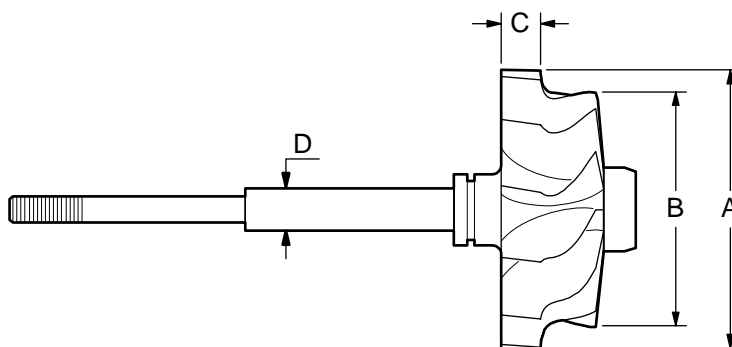
Journal Bearings		
Oversize's Available		Part Number
OD +.005"	ID -.005"	1500-320-110
OD +.005"	ID Std	1500-320-114
OD Std	ID -.005"	1500-320-117
OD +.010"	ID -.010"	1500-320-120
OD +.010"	ID Std	1500-320-124
OD Std	ID -.010"	1500-320-127
OD +.005"	ID -.010"	1500-320-130

Piston Rings		
Oversize's Available		Part Number
Turbine End		
OD +.010	Wth Std	1500-320-180
OD Std	Wth +.010	1500-320-181
OD +.010	Wth +.010	1500-320-182

Toyota CT20

Major Replacement Parts - Detail

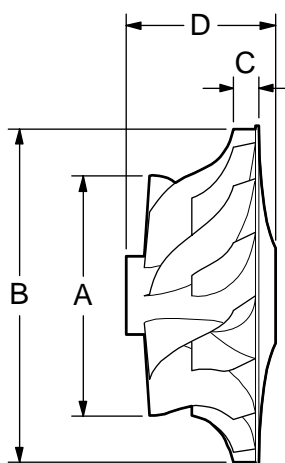
Shaft & Wheel



Melett Part No.	To fit Toyota....	(A) Inducer ø mm's	(B) Exducer ø mm's	(C) Tip width mm's	(D) Shaft OD mm's
1500-320-435	17201-54030 Landcruiser 2.4L LJ70 '84-'90 (T/Hsg ID 54010)	59.7	48.2	10.2	10.0
1500-320-436	17201-54060 Landcruiser 2.4L LJ70/73 '90-'98 (T /Hsg ID 54030)	59.7	44.0	9.9	10.0

Melett's fully qualified Engineers are available to answer any technical enquiry regarding limits, tolerances, and turbo set-up configurations. Email: Engineer@melett.com

Compressor Wheel



Melett Part No.	To fit Toyota	(A) Inducer ø mm's	(B) Full ø mm's	(C) Tip width mm's	(D) Total Hub Length	No. of Blades
1500-320-400	17201-54030 Landcruiser 2.4L LJ70 '84-'90 (T/Hsg ID 54010)	36.1	56.9	3.2	24.3	12
1500-320-401	17201-54060 Landcruiser 2.4L LJ70/73 '90-'98 (T /Hsg ID 54030)	39.6	56.9	3.1	24.3	12

Toyota CT20

Major Replacement Parts – Detail

Replacement Turbine Housings



Make	Model	Year	To fit turbo...	OE Housing Identification No.	Detail	Melett Number
Toyota	Landcruiser 2.4L LJ70	'84-'90	17201-54030	54010	Round entry	1500-320-820
Toyota	Turbine Hsg CT20 (Sq Ent) (Act. arm inboard)	'90-'98	17201-54060	54030	Square entry	1500-320-821
Toyota	Turbine Hsg CT20 (Sq Ent) (Act. arm outboard)	'90-'98	17201-54060	54030	Square entry	1500-320-822

Difference between 1500-320-821 and 1500-320-822 actuator arms are shown below



1500-320-821



1500-320-822

Toyota CT26 Small Type Turbos

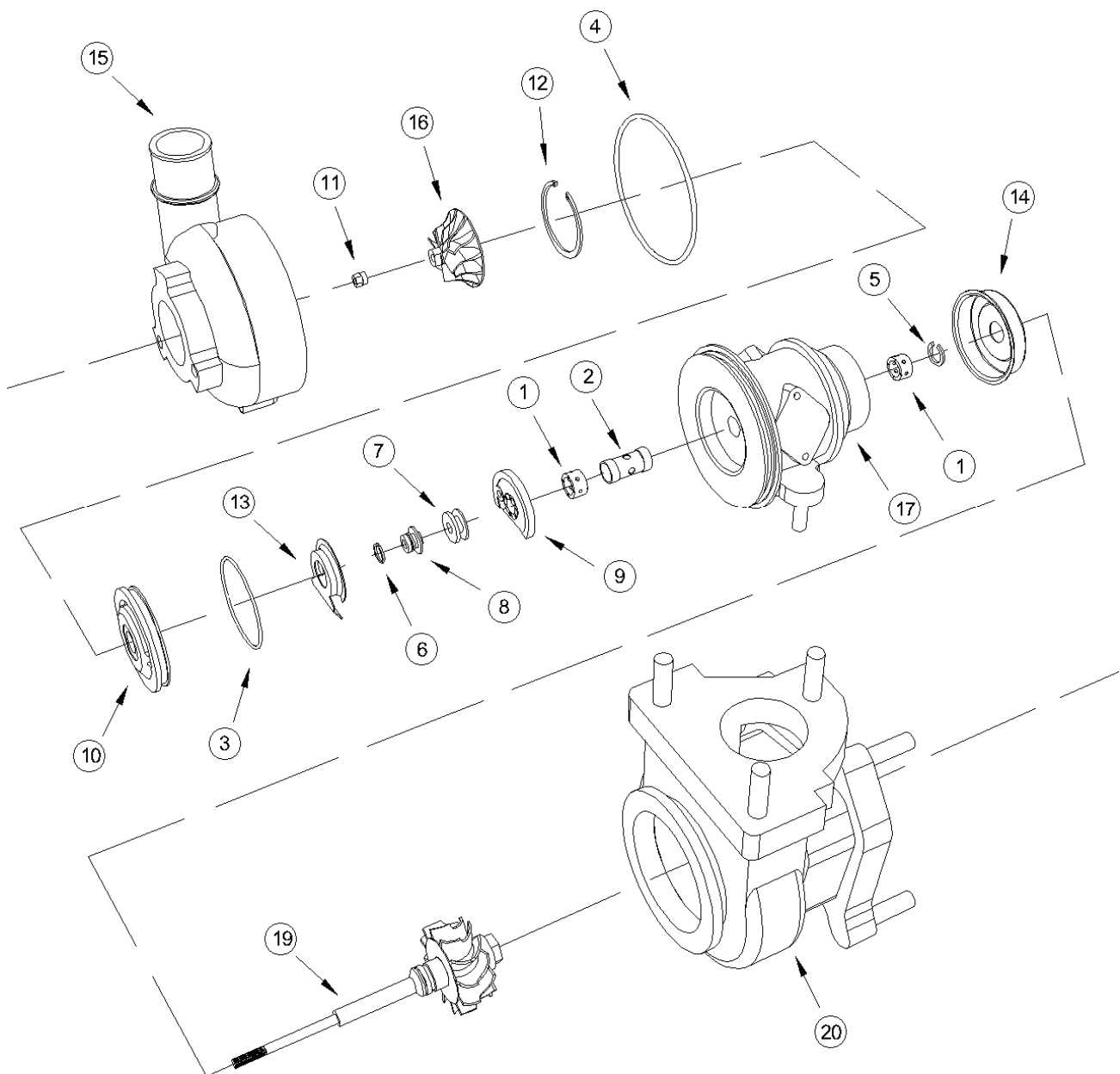
Also Known as CT20B

Common Service Parts
Oversize Service Parts
Major Service Parts
(Shaft & Wheels, Compressor Wheels)

Toyota CT26 Small Type

Dynamic Seal

Component Parts Common



Toyota CT26 Small

Repair Parts & Service Kits

All parts are available for purchase as individual components or in the following popular Repair Kits

Key	Part Description	Melett Part Number	Quantity Per Turbo	CT20B/26 Minor (17040) 1500-322-750
1	Journal bearing	1500-322-100	2	2
	Brg Retaining Ring	1500-309-140	3	3
3	"O"Ring Seal Plate	1401-405-150		1
5	Piston Ring t/e	1500-312-160	1	1
6	Piston Ring c/e	1500-312-170	1	1
7	Thrust Collar	N/A	1	
8	Thrust Spacer	N/A	1	
9	Seal Plate	N/A	1	
10	Thrust Bearing	1500-313-320	1	1
11	Shaft Nut M5x0.5mm LHT	1500-313-351	1	1
13	Oil Deflector	N/A	1	
-	Seal Plate Retaining Ring	N/A	1	
	Gasket – Oil Inlet / Outlet	1500-320-790	1	
	Gasket – Water	1500-320-791	2	

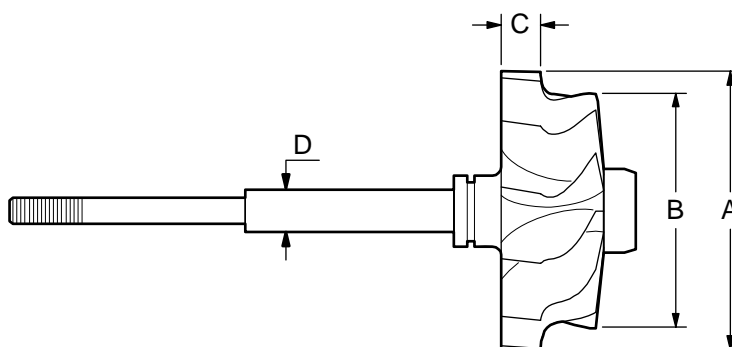
Oversize Repair Parts Available

Piston Rings		
Oversize's Available		Part Number
Turbine End		
OD +.010	Wth Std	1500-312-180
OD Std	Wth +.010	1500-312-181

Toyota CT26 Small

Major Replacement Parts – Detail

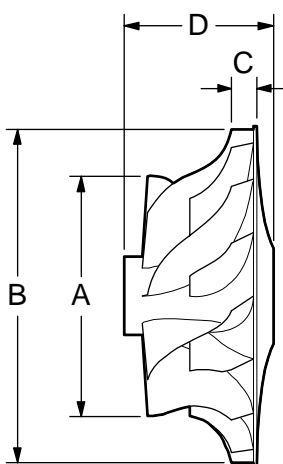
Shaft & Wheel



Melett Part No.	To fit Toyota....	(A) Inducer Ø mm's	(B) Exducer Ø mm's	(C) Tip width mm's	(D) Shaft OD mm's
1500-326-436	17201-17040 Landcruiser 98 -	59.8	48.0	8.0	8.5
1500-326-438	CT12/26 (ceramic replacement) ST205 Celica	60.0	50.0	11.7	8.5

Melett's fully qualified Engineers are available to answer any technical enquiry regarding limits, tolerances, and turbo set-up configurations. Email: Engineer@melett.com

Compressor Wheel



Melett Part No.	To replace Toyota...	(A) Inducer Ø mm's	(B) Full Ø mm's	(C) Tip width mm's	(D) Overall Height mm's	C/W Bore
1500-326-402	17201-17040 Landcruiser 98 -	46.8	65.0	5.3	29.2	5.7

Toyota CT26 Type Turbos

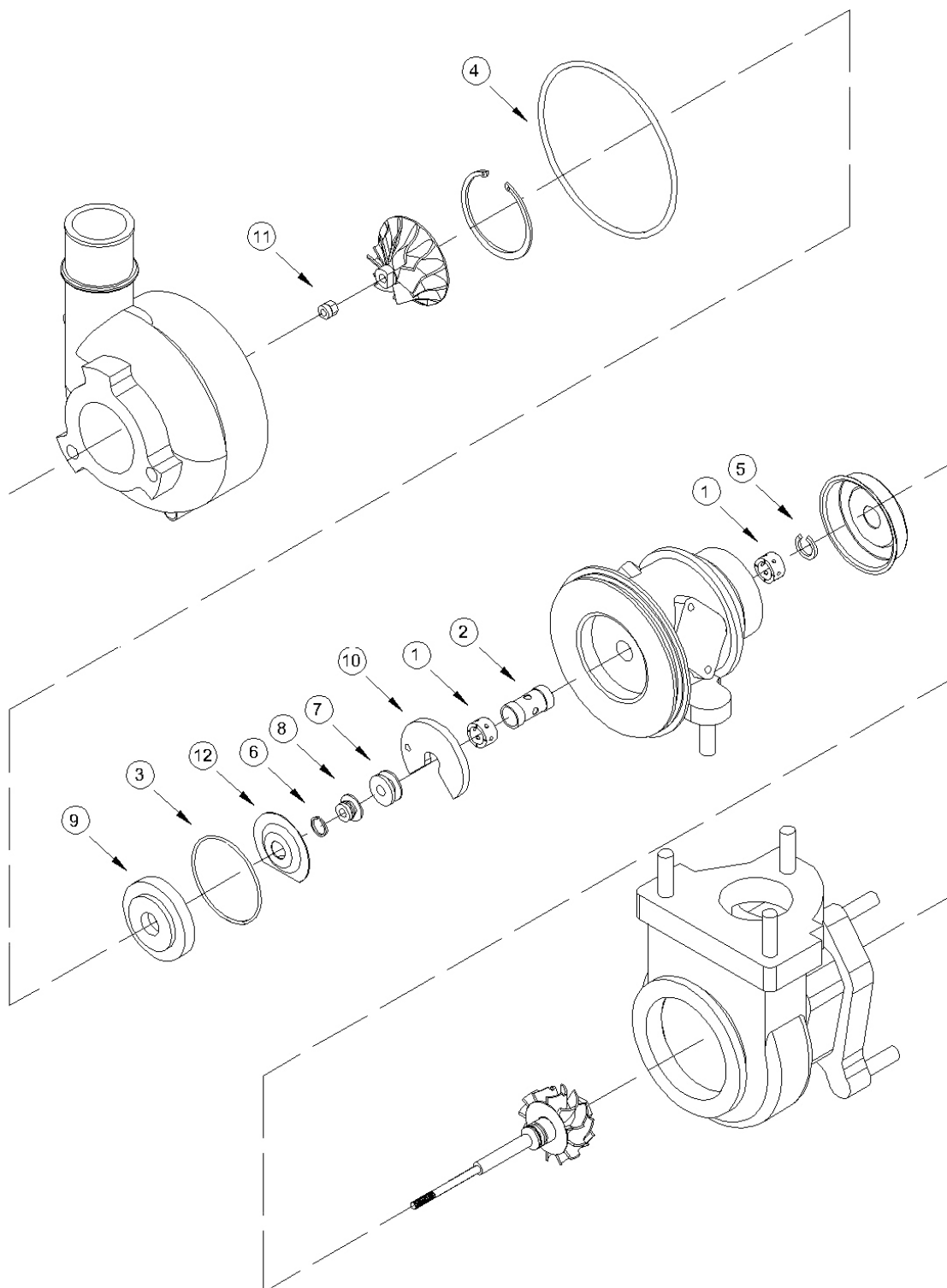
Dynamic & Carbon Seal

Common Service Parts
Oversize Service Parts
Major Service Parts
(Shaft & Wheels, Compressor Wheels)
Turbine Housing

Toyota CT26 Type

Dynamic Seal

Component Parts Common



Toyota CT26

Dynamic Seal

Repair Parts & Service Kits

All parts are available for purchase as individual components or in the following popular Repair Kits

Key	Part Description	Melett Part Number	Quantity Per Turbo	CT26 Minor Kit 1500-326-750	CT26 Major Kit 1500-326-753	CT20/CT26 Universal Kit 1500-326-754
1	Journal bearing	1500-320-100	2	2	2	2
2	Bearing Spacer	1500-326-290	1			
3	"O"Ring Seal Plate	1500-320-150	1	1	1	1
4	"O"Ring Comp Cover CT20 (Ø104)	1500-320-155	1			1
4	"O"Ring Comp Cover CT26 (Ø125)	1500-326-155	1	1	1	1
5	Piston Ring t/e	1500-320-160	1	1	1	1
6	Piston Ring c/e	1500-320-170	1	1	1	1
7	Thrust Collar (Std)	1500-320-200	1		1	1
8	Thrust Spacer (Dynamic)	1500-320-221	1		1	1
9	Seal Plate (Dynamic)	1500-320-301	1		1	1
10	Thrust Bearing	1500-320-320	1	1	1	1
11	Shaft Nut M6x1mm LHT	1500-320-351	1	1	1	1
12	Oil Deflector	1500-320-310	1			
-	Seal Plate Retaining Ring	1500-326-145	1			
	Gasket – Oil Inlet / Outlet	1500-320-790	1	1	1	1
	Gasket – Water	1500-320-791	2	2	2	2

Oversize Repair Parts Available

Journal Bearings		
Oversize's Available		Part Number
OD +.005"	ID -.005"	1500-320-110
OD +.005"	ID Std	1500-320-114
OD Std	ID -.005"	1500-320-117
OD +.010"	ID -.010"	1500-320-120
OD +.010"	ID Std	1500-320-124
OD Std	ID -.010"	1500-320-127
OD +.005"	ID -.010"	1500-320-130

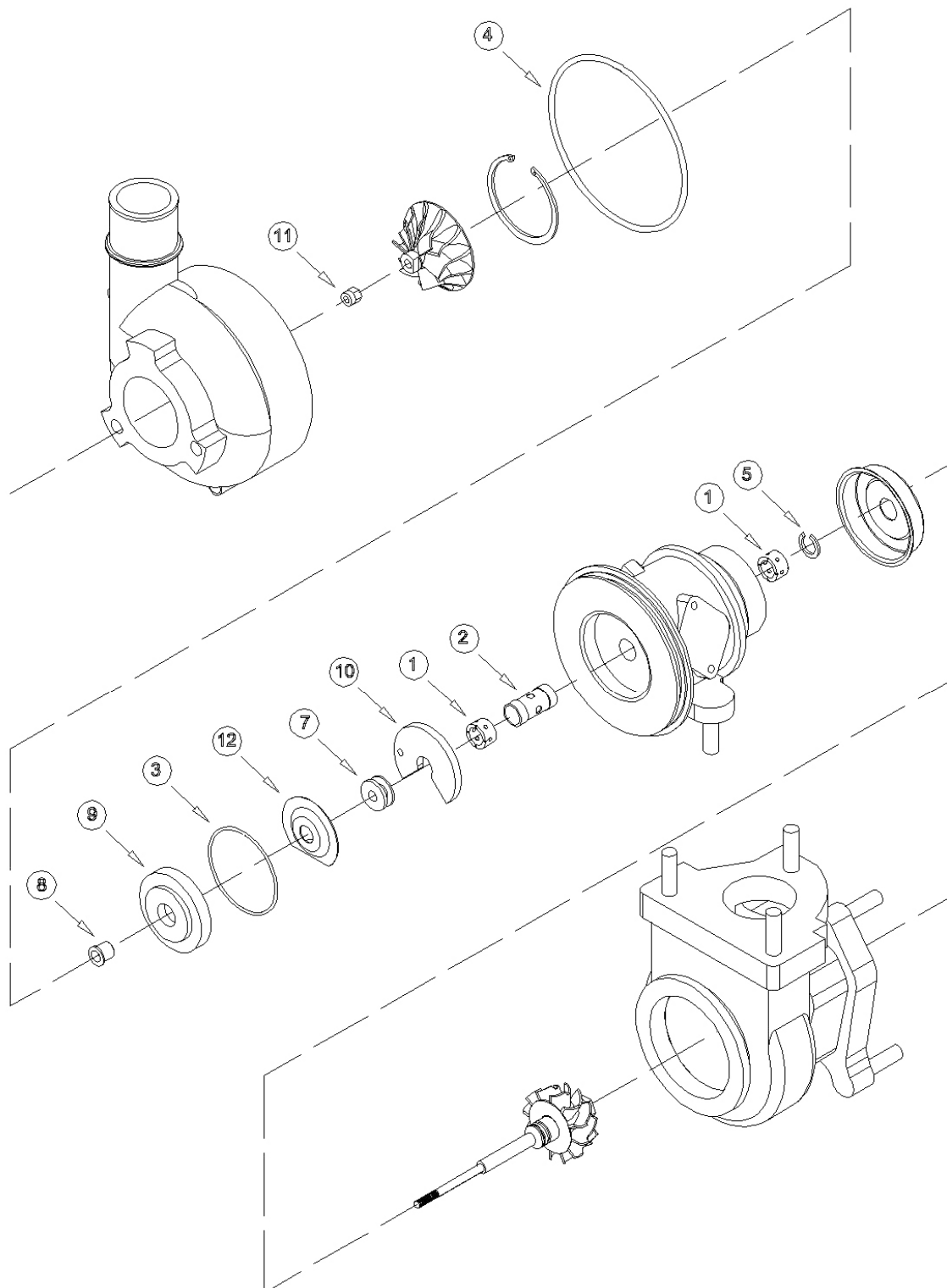
Bearing Spacer	
Oversize's Available	Part Number
Standard OD	1500-326-290
+0.005" OD	1500-326-291
+0.010" OD	1500-326-292

Piston Rings		
Oversize's Available		Part Number
Turbine End		
OD +.010	Wth Std	1500-320-180
OD Std	Wth +.010	1500-320-181
OD +.010	Wth +.010	1500-320-182

Toyota CT26 Type

Carbon Seal

Component Parts Common



Toyota CT26

Carbon Seal

Repair Parts & Service Kits

All parts are available for purchase as individual components or in the following popular Repair Kits

Key	Part Description	Melett Part Number	Quantity Per Turbo	CT20/CT26 Minor Kit 1500-326-751	CT20/CT26 Major Kit 1500-326-752	CT20/CT26 Universal Kit 1500-326-755
1	Journal bearing	1500-320-100	2	2	2	2
2	Bearing Spacer	1500-326-290	1			
3	"O"Ring Seal Plate	1500-320-150	1	1	1	1
4	"O"Ring Comp Cover CT20 (Ø104)	1500-320-155	1			1
4	"O"Ring Comp Cover CT20 (Ø114)	1500-320-156	1			
4	"O"Ring Comp Cover CT26 (Ø125)	1500-326-155	1	1	1	1
5	Piston Ring t/e	1500-320-160	1	1	1	1
6	Piston Ring c/e	1500-320-170	1			
7	Thrust Collar (Std)	1500-320-200	1		1	1
8	Thrust Spacer (Carbon)	1500-320-220	1		1	1
9	Seal Plate (inc. Carbon Assy) 6.1mm Flange (Standard)	1500-320-300	1	1	1	1
10	Thrust Bearing	1500-320-320	1	1	1	1
11	Shaft Nut M6x1mm LHT	1500-320-351	1	1	1	1
-	Seal Plate Retaining Ring	1500-326-145	1			
	Gasket – Oil Inlet / Outlet	1500-320-790	1	1	1	1
	Gasket – Water	1500-320-791	2	2	2	2

Notes: 1) CT20 and CT26 repair kits are identical except for the Comp Cover O-ring – USE **1500-326-755** kit to repair both CT20/CT26 carbon seal models from one kit.

Oversize Repair Parts Available

Journal Bearings		
Oversize's Available		Part Number
OD +.005"	ID -.005"	1500-320-110
OD +.005"	ID Std	1500-320-114
OD Std	ID -.005"	1500-320-117
OD +.010"	ID -.010"	1500-320-120
OD +.010"	ID Std	1500-320-124
OD Std	ID -.010"	1500-320-127
OD +.005"	ID -.010"	1500-320-130

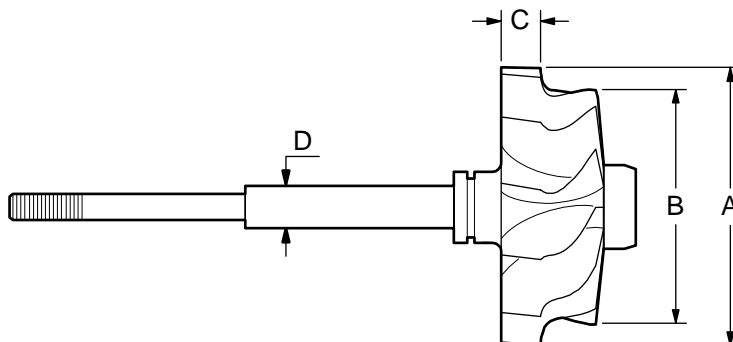
Bearing Spacer	
Oversize's Available	Part Number
Standard OD	1500-326-290
+0.005" OD	1500-326-291
+0.010" OD	1500-326-292

Piston Rings		
Oversize's Available		Part Number
Turbine End		
OD +.010	Wth Std	1500-320-180
OD Std	Wth +.010	1500-320-181
OD +.010	Wth +.010	1500-320-182

Toyota CT26

Major Replacement Parts - Detail

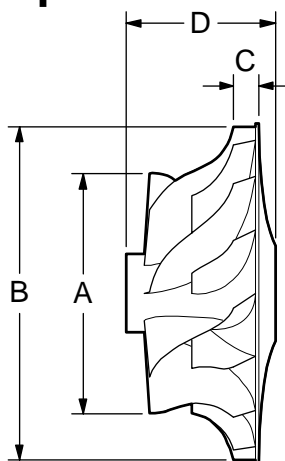
Shaft & Wheel



Melett Part No.	To fit Toyota....	(A) Inducer Ø mm's	(B) Exducer Ø mm's	(C) Tip width mm's	(D) Shaft OD mm's
1500-326-437	17201-42020 Supra '87-'88	67.8	51.9	11.6	10.0
	17201-17010/30/40 Landcruiser '89-'99				
	17201-74010/20/30 Celica (165/185) '87-'94				
	17201-42060 MR2 '89-'99				

Melett's fully qualified Engineers are available to answer any technical enquiry regarding limits, tolerances, and turbo set-up configurations. Email: Engineer@melett.com

Compressor Wheel



Melett Part No.	To replace Toyota...	(A) Inducer Ø mm's	(B) Full Ø mm's	(C) Tip width mm's	(D) Overall Height mm's	No. of Blades
1500-326-401	17201-17010/30/40 Landcruiser '89-'99	42.0	65.0	3.7	27.6	10
1500-326-400	17201-42020 Supra '87-'88	45.5	65.0	3.7	27.6	10
1500-326-401	17201-42060 MR2 '89-'99	42.0	65.0	3.7	27.6	10
1500-326-401	17201-74010/20/30 Celica (165/185) '87-'94	42.0	65.0	3.7	27.6	10

Toyota CT26

Major Replacement Parts – Detail

Bearing Housing & Heat Shield

Melett Number	Description
1500-326-450	CT26 Bearing Housing (separate heat shield) Water Cooled
1500-326-340	CT26 Heat Shield

Turbine Housings



Make	Model	Year	To fit turbo...	OE Housing Identification No.	Detail	Melett Number
Toyota	Landcruiser 4.2L	90-01	17201-17010	58020	Round Entry	1500-326-820
Toyota	Supra 3.0L	87-88	17201-42020	42010	Round Entry	1500-326-821
Toyota	Celica 2.0L	88-90	17201-74010	74010	Round Entry	1500-326-822