



### TOYOTA 200 Series Land Cruiser

#### Thank you for choosing White Knuckle Rock Sliders

Please read the instructions before beginning installation. Please install the Rock Sliders before painting or powder coating to avoid finish damage and to ensure correct fit. Check hardware kit contents against content list below. Also, check the tools needed against the list below.

#### Hardware Kit

- 1-Driver Side Rock Slider
- 1-Passenger Side Rock Slider
- 12 each 3/8" x 1" Thread Cutting Bolts
- 2 each 1/2" x 4-1/2" Grade 8 Bolts, Nuts, Flat Washers, and Lock Washers
- 2 each 1/2" x 6-1/2" Grade 8 Bolts, Nuts, Flat Washers, and Lock Washers
- 2 each 1/4" x 2" x 5" Backing Plates
- 2 each 1/4" x 2" x 5" Backing Plates W/Welded Nut
- 1 each 1/8" x 3/4" Notched Shim
- 4 each 12mm x 30mm Bolts and Flat Washers
- 1 ea 12mm Tap

#### Tools Needed

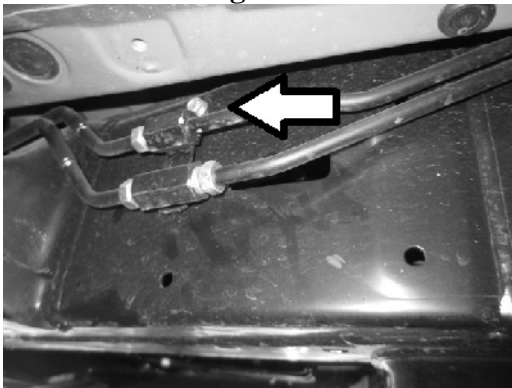
- 3/8" Drill
- 1/8", 1/4", 21/64", 7/16" Drill Bits
- Center Punch and Hammer
- Air Impact Wrench if available
- 3/4", 9/16", 19mm, 12mm Wrenches
- 9/16" Socket and Ratchet
- Bottle Jack
- 2 Axle Stands
- "C" Clamps (optional)

### INSTALLATION INSTRUCTIONS

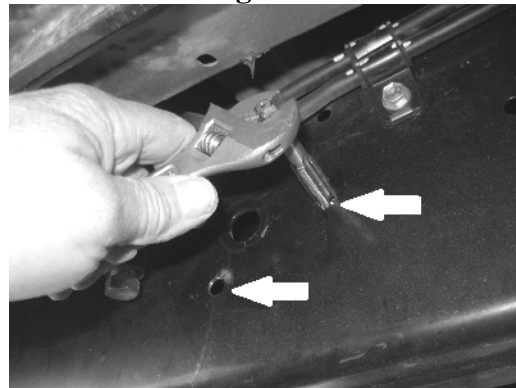
1. Driver side - Loosen the hard line bracket screw to allow for the 1/8" x 3/4" notched shim to fit under the bracket **Figure 1**. Do not install the shim at this time.
2. Thread the 2 holes used for the center mounting plate with the supplied 12mm tap **Figure 2**. A small socket and ratchet can be used on the end of the tap for better stability. Make sure to put pressure on the back of the tap when cutting the initial threads. **NOTE:** A 13/32" drill bit can be used to open the hole slightly making it easier to start the tap.
3. Place the axle stands directly under the rocker panel. Place the slider on the axle stands **Figure 3**.
4. The factory holes in the frame should be aligned to allow the 1/2" bolts to go thru the mounting plates and the frame.
5. Front mount - Insert the 1/2" x 6-1/2" bolt and flat washer thru the frame and the backing plate then through a flat washer, lock washer, and nut **Figure 4**. Begin the nut but keep it loose for the time being to allow for adjustment of the slider position.
6. Rear mount - Insert the 1/2" x 4-1/2" bolt, flat washer, and lock washer through the frame then thread the bolt in the backing plate with welded nut (nut facing away from the bolt hole) **Figure 5**. Keep all of the fasteners loose to allow adjustment of the slider. **NOTE: Make sure the 1/2" x 4-1/2" bolt used with the right rear mount does not come in contact with the gas tank when tightened.**

7. Center mount – Thread the 12mm x 20mm bolts and flat washers in the holes you have tapped. A small amount of thread locker on the bolt threads is recommended. Do not tighten at this time.
8. Now adjust the slider front to rear and make sure the bottom of the “L” mounting plates are snug under the frame (a bottle jack is best for this) **Figure 6**. Clamp the mounting plates to the frame or tighten the bolts thru the factory frame holes. “C” clamps, if used, should be as high as possible on the mounting plate to eliminate any gap between the frame and the top of the vertical portion of the mounting plate.
9. Stand back to take a look at the slider in relation to the vehicle body. Make sure the rock slider is in the desired position, level, and no gaps between the frame and the mounting plates. **Mark** the holes to be drilled on the underside of the frame with the 7/16” drill bit or a size close to it by turning the bit back and forth by hand **Figure 7**. This will help you find the exact center of each hole.
10. Find the marks on the frame made by the drill bit. Use the center punch on each of these marks for pre-drilling.
11. Drill a pilot hole thru each of the marks with the 1/8” drill bit and then with the 1/4” and finally with the 21/64” drill bit. Make sure to keep the drill perpendicular to the frame when drilling the holes to insure the bolts go in straight **Figure 8**.
12. Using the 9/16” socket and ratchet or air impact wrench (recommended), begin the supplied 3/8” X 1” Thread Cutting bolts. Keep the bolts perpendicular to the frame with significant pressure against the back of the ratchet as you begin cutting the threads in the frame **Figure 9**. Continue tightening the bolts until they are easy to turn. The impact wrench is best for this procedure if available. Do not attempt to unscrew the bolt until the threads have been completely cut. **DO NOT OVERTIGHTEN** or you may strip out the threads you just cut.
13. Repeat steps 1 thru 6 to install bolts and backing plates along with the 3/8” x 1” thread cutting bolts. Rotate from bolt to bolt and end to end to insure the mounting plates have no gaps between them and the frame and continue until all bolts are tight.
14. Place the 1/8” x 3/4” notched shim between the frame and the hard line bracket at the driver side front mounting plate and tighten the bracket screw **Figure 10**. Make sure the hard lines are not contacting the mounting plate

**Figure 1**



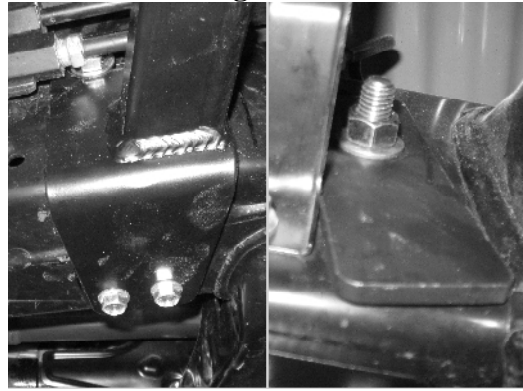
**Figure 2**



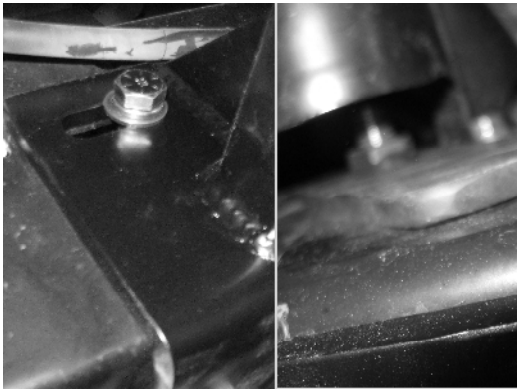
**Figure 3**



**Figure 4**



**Figure 5**



**Figure 6**



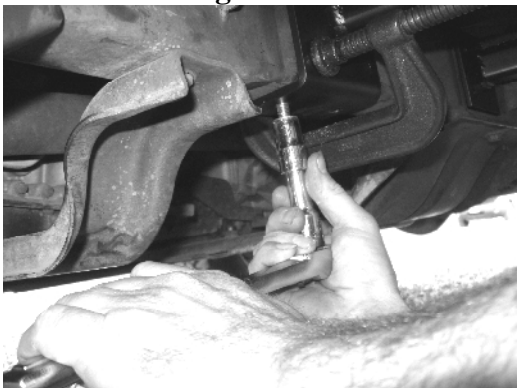
**Figure 7**



**Figure 8**



**Figure 9**



**Figure 10**



## **SAFETY FIRST**

**Observe proper safety procedures during installation. Improperly used tools and unsafe procedures can cause injury or death. Refer to manufacturers manuals for use and warnings of tools to be used.**

**Modifications to your vehicle can cause dangerous conditions. The buyers and users of this product assume all risks associated with the installation and use of this product. All installations should be made by a qualified mechanic.**

## **DISCLAIMER**

**White Knuckle Off Road Products, LLC stands behind all of our quality off-road fabricated products. WKORP will not be held responsible nor will we accept liability for failure of parts as a result of extreme off-road use. Minor modifications may be required to allow the installation of our products.**

**Modifications to your vehicle using products manufactured by WKORP may create dangerous conditions. Modifications to your vehicle are done at your own risk. WKORP will not accept responsibility or liability from damage or personal injury caused by installing or using installed products manufactured by WKORP whether intended or unintended. The buyer accepts all responsibility and risks associated with any modifications using WKORP manufactured products. All products manufactured by White Knuckle Off Road Products, LLC are for off-road use only.**

**The powder coated finish provided by WKORP will carry no warranty or guarantee. The powder coated finish is provided as a service. Any damage to the finish during shipping must be reported immediately. Any damage, wear, or anomalies incurred to the finish after receiving parts from WKORP are the responsibility of the buyer or user.**

**[www.white-knuckleoffroad.com](http://www.white-knuckleoffroad.com)**