

Premium HDD Navigation Map Update Process (AVN/AW-EMV)

Service Category Audio/Visual/Telematics

Section Navigation/Multi Info Display

Market USA

Toyota Supports
ASE Certification 

Applicability

YEAR(S)	MODEL(S)	ADDITIONAL INFORMATION
2013 - 2014	Avalon, Avalon HV, Venza	
2012 - 2014	Camry, Camry HV, Prius V, RAV4 EV	
2013 - 2015	Land Cruiser	
2012 - 2015	Prius, Prius PHV	
2013	Sequoia	

SUPERSESSION NOTICE

The information contained in this bulletin supersedes SB No. T-SB-0133-14.

- The Parts Information, Required Tools & Equipment, and On-Vehicle Navigation Update sections have been updated.

Service Bulletin No. T-SB-0133-14 is obsolete and any printed versions should be discarded. Be sure to review the entire content of this bulletin before proceeding.

Introduction

Toyota models equipped with the Premium HDD Navigation (AVN/AW-EMV) system require a Special Service Tool (SST) USB drive to update the map, points of interest, Gracenote®, and system software. The SST is used with all vehicles to deliver the update; however, a unique activation number is required for each vehicle. Activation numbers are provided in an Activation Card Number pamphlet available through the normal parts ordering system. Use the process described in this bulletin to perform the update.

NOTE

- Gracenote® information **MUST** be updated at the same time as map data. This data is included on the map data SST.
- Map data will be released annually through the shipment of a USB drive SST to each dealer. The SST **MUST** be stored in the SST cabinet to ensure that it can be easily found.

Premium HDD Navigation Map Update Process (AVN/AW-EMV)

Warranty Information

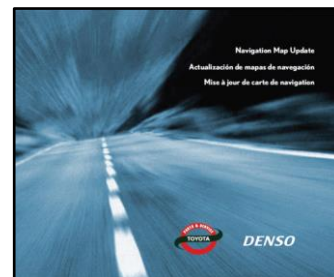
OP CODE	DESCRIPTION	TIME	OFF	T1	T2
N/A	Not Applicable to Warranty	–	–	–	–

Parts Information

PART NUMBER	PART NAME	QTY
86271-HDD07-17	ACN NAV UPDTE V.17.1 (Pamphlet)	1

NOTE

The pamphlet is blue with Toyota and Denso labels on the front cover.



Required Tools & Equipment

SPECIAL SERVICE TOOLS (SST)	PART NUMBER	QTY
USB Drive Navigation Map Update – Denso*	TOYD-HDD07-17	1

* Essential SST.

NOTE

Additional SSTs may be ordered by calling 1-800-933-8335.

On-Vehicle Navigation Update

1. Update Gracenote® information using Service Bulletin [T-SB-0108-15](#), “Premium HDD Navigation Gracenote Database Update.”

HINT

Connect a battery charger to the vehicle prior to beginning the process to ensure constant battery voltage.

2. Log in to the Technical Information System (TIS).

Premium HDD Navigation Map Update Process (AVN/AW-EMV)

On-Vehicle Navigation Update (Continued)

3. Log in to the Navigation Update Wizard.
 - A. Click on the *TIS* tab.
 - B. Click on the *Diagnostics* tab.
 - C. Click on the *Navigation* tab.
 - D. Re-enter your password.
 - E. Click *Login*.

Figure 1.



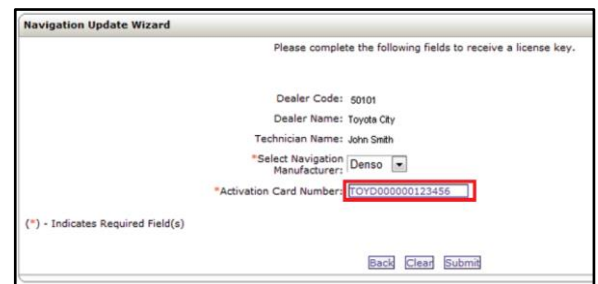
4. Select *Denso* from the “Select Navigation Manufacturer” dropdown.

Figure 2.



5. Enter the activation card number from the inside of the pamphlet.
6. Click *Submit*.

Figure 3.



7. Cycle the ignition ON (Engine/Hybrid/EV system OFF).

NOTE

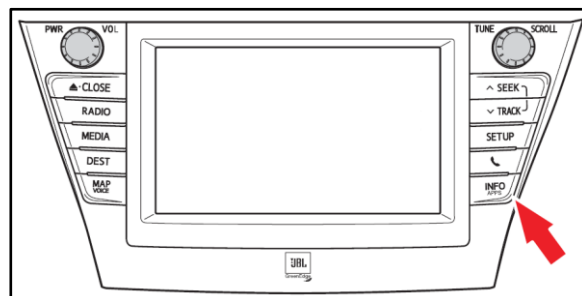
- Vehicles **WITHOUT** Smart Key system: Turn the ignition key to the “ON” position.
- Vehicles **WITH** Smart Key system: Press the “Engine Start Stop” switch two times with the brake pedal released.

Premium HDD Navigation Map Update Process (AVN/AW-EMV)

On-Vehicle Navigation Update (Continued)

8. Press the *INFO APPS* button on the navigation head unit.

Figure 4.



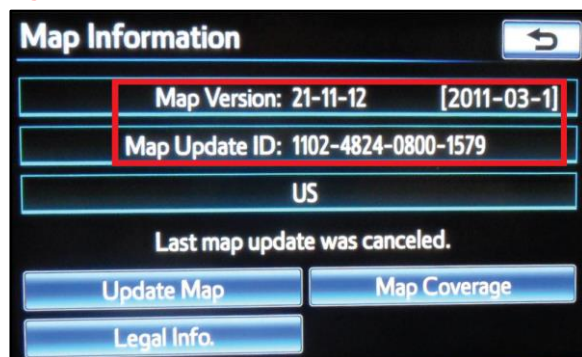
9. Select *Map Data* on the navigation screen.

Figure 5.



10. Record the map version and map update ID from the navigation screen.

Figure 6.



Premium HDD Navigation Map Update Process (AVN/AW-EMV)

On-Vehicle Navigation Update (Continued)

11. Enter navigation data into the Navigation Update Wizard form.
 - A. Select the correct USB part number (found on the SST packaging, starts with "TOYD").
 - B. Input the map update ID into TIS (without hyphens).
 - C. Input the map version into TIS.
 - D. Enter the VIN.
 - E. Enter the *repair order number*.
 - F. Click *Submit*.
12. Check off each item AFTER confirming that it is correct. If ANY of the information is incorrect, click the *Back* button.
13. Click *Confirm*.
14. Note the license key that is generated. (Print this page if necessary.)
15. Insert the USB drive SST into the USB port of the vehicle (usually located under the navigation head unit, in the center console/armrest, or glove box).
16. Select *Update Map* on the navigation screen.

Figure 7.

Navigation Update Wizard

Please complete the following fields to receive a license key.

Dealer Code: 50101

Dealer Name: Toyota City

Technician Name: John Smith

Navigation Manufacturer: Denso

Activation Card Number: TOYD00000123456

*USB Stick P/N: TOYD-HDD07-12

*Map Update ID: 1102462200001111

*Map Version: 21-11-24 2011-06-1

*VIN: JTDZN3EUBC3012275

*Repair Order Number: 123456

(*) - Indicates Required Field(s)

Back Clear Submit

Figure 8.

Navigation Update Wizard

You are about to update the Navigation Map. Please confirm the following by checking each box below.

☒ You have USB Stick P/N TOYD-HDD07-12

☒ You have entered Map Update ID 1102462200001111

☒ You have entered Map Version 21-11-24 2011-06-1

☒ VIN is JTDZN3EUBC3012275

Back Confirm

Figure 9.

Navigation Update Wizard

Thank you John Smith. This license key is valid for one update. Please print this page for your reference.

Your License Key is: 10101010

Please use this license key with USB Stick: P/N - TOYD-HDD07-12

Map Update ID: 1102462200001111

New Map Version: 21-11-24 2012-21-1

Navigation Update Vehicle Details

VIN: JTDZN3EUBC3012275

Repair Order Number: 123456

Dealer: 50101

Click here to return to the Navigation homepage Print

Figure 10.

Map Information

Map Version: 21-11-24 [2011-06-1]

Map Update ID: 1102-4824-0800-1579

US

Last map update was completed.

Update Map Map Coverage

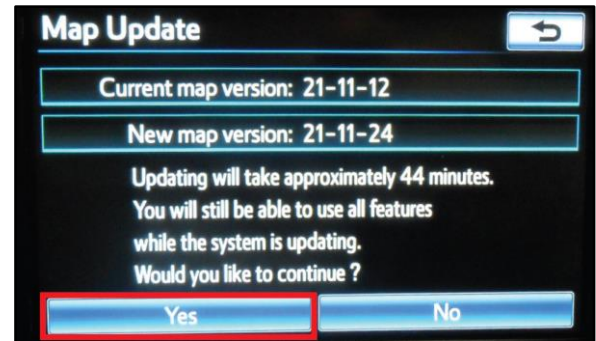
Legal Info

Premium HDD Navigation Map Update Process (AVN/AW-EMV)

On-Vehicle Navigation Update (Continued)

17. Select Yes.

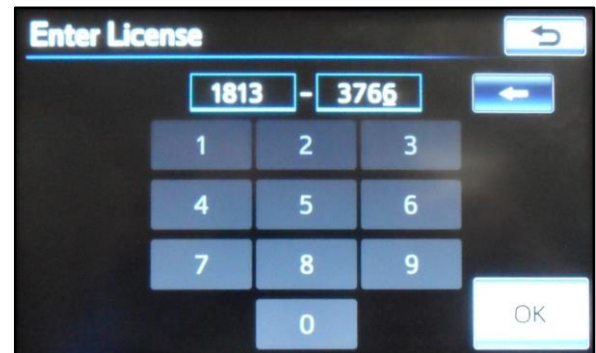
Figure 11.



18. Enter the license key from step 14.

19. Select OK.

Figure 12.



20. Update the navigation head unit software. Select Yes on the “Software Update” screen to accept and begin this update.

If the head unit displays the “Map Update” screen, go to step 21.

NOTE

Navigation map data will be loaded when this process completes.

Figure 13.

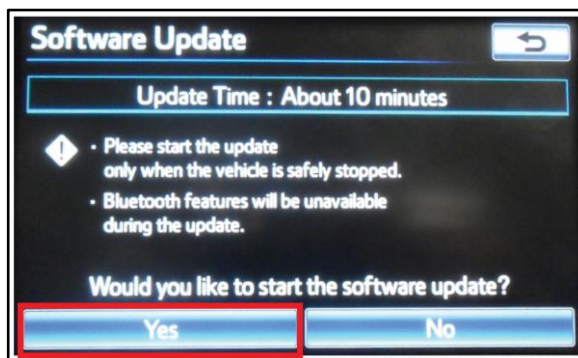
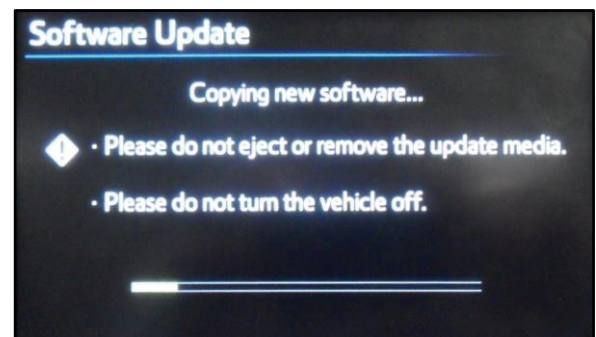


Figure 14.

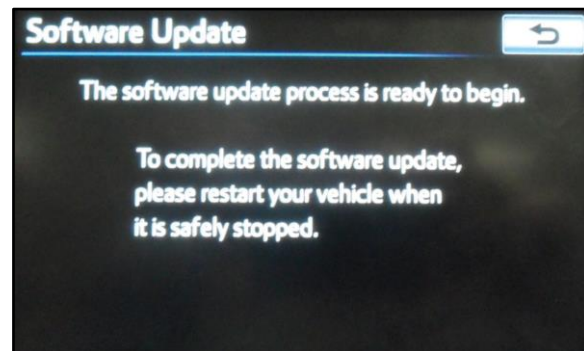


Premium HDD Navigation Map Update Process (AVN/AW-EMV)

On-Vehicle Navigation Update (Continued)

- A. Cycle ignition OFF, then ON (Ready OFF/Engine OFF).

Figure 15.

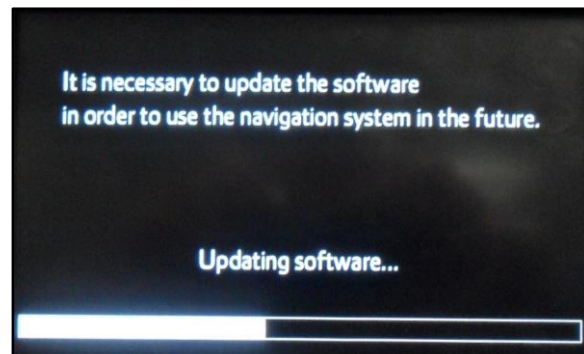


- B. Allow the update to complete.

NOTE

This process will take approximately 10 minutes.

Figure 16.



- C. The head unit will prompt to cycle ignition. Cycle ignition OFF and then ON (Ready OFF/Engine OFF).

- D. Press the *INFO APPS* button.

Figure 17.



- E. Select "Map Data" on the navigation screen.

Premium HDD Navigation Map Update Process (AVN/AW-EMV)

On-Vehicle Navigation Update (Continued)

21. The navigation map update will begin automatically.

NOTE

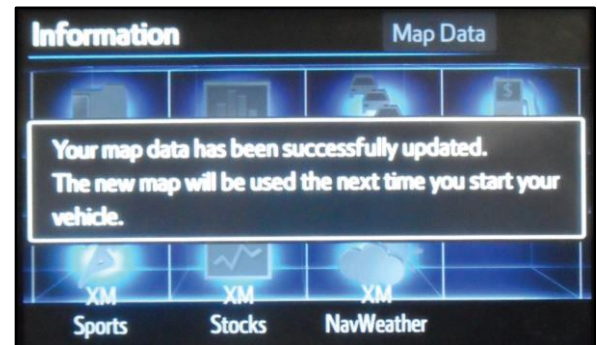
This process will take approximately 45 minutes.

Figure 18.



22. The NEW map data will be available AFTER the ignition is cycled. Cycle ignition OFF, then ON (Ready OFF/Engine OFF).

Figure 19.



23. Remove the USB drive SST from the vehicle to complete the map update.

24. The map update is complete.

Figure 20.



25. Verify navigation operation.