

ScanGauge Mount for 100-Series Land Cruiser & LX470

Installation Instructions

Note: Some pictures show development versions of the ScanGauge Mount with features that have been changed or improved.

To complete the installation you'll need to purchase an inexpensive RJ45 extension cable 4-feet in length or longer, similar to this product: <https://www.amazon.com/dp/B01B1HX02A>

- ScanGauge Mount Prep:

1. Paint the ScanGauge Mount. Let dry completely.
2. Cut two squares from the Velcro included with ScanGauge. Stick them at rear of cavity as shown below. Keep the Velcro mated together while sticking them on. (Black tape shown in picture below is not required.)



3. Remove adhesive backing from the top of the Velcro, position the ScanGauge, and push it down securely into the cavity. Remove the ScanGauge by pushing from the back of the mount, and the Velcro will be perfectly positioned.

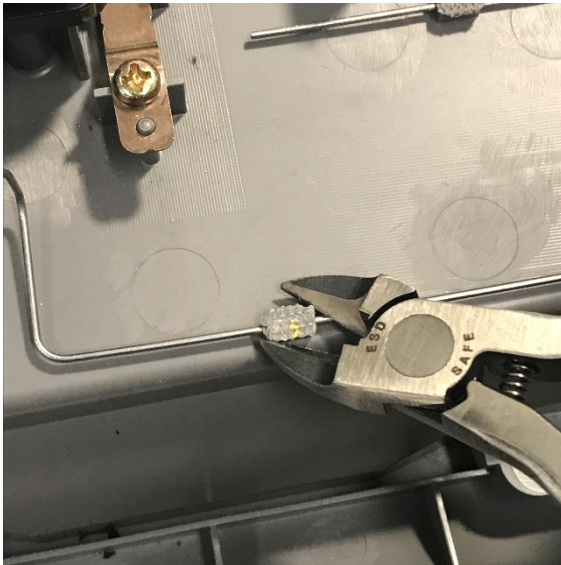


- Console Removal & Mount Installation:

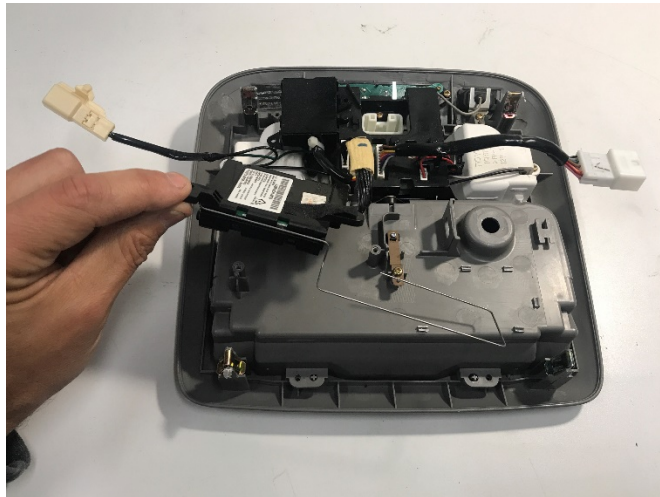
Note: Wash hands before working around the headliner.

4. Open the upper console's hinged box. Remove screw to roof.

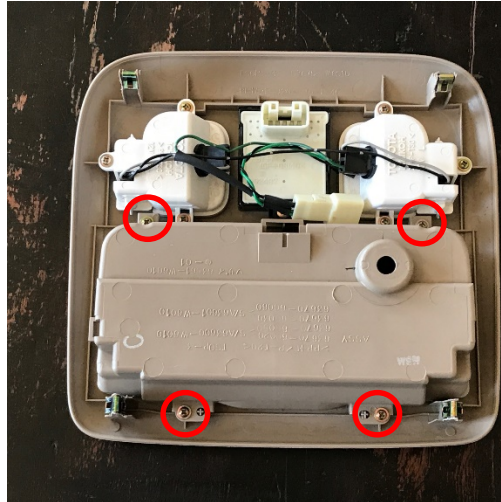
5. Pull down at edges of console to release the four metal tabs at the corners. They should remain captive on their posts but sometimes they come off. If so, push them back on to the posts.
6. Unplug the connectors for the sunroof, map lights, and HomeLink (if applicable) and bring console to your work area.
7. If you have HomeLink:
 - a. Using diagonal cutters, trim tops of the plastic antenna retainers to release the antenna.



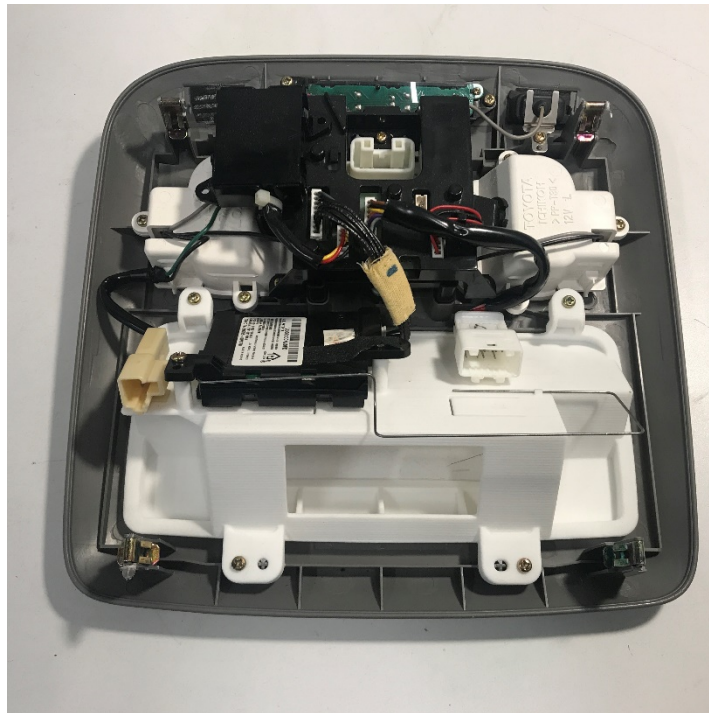
- b. Release the HomeLink box by unscrewing the two screws.

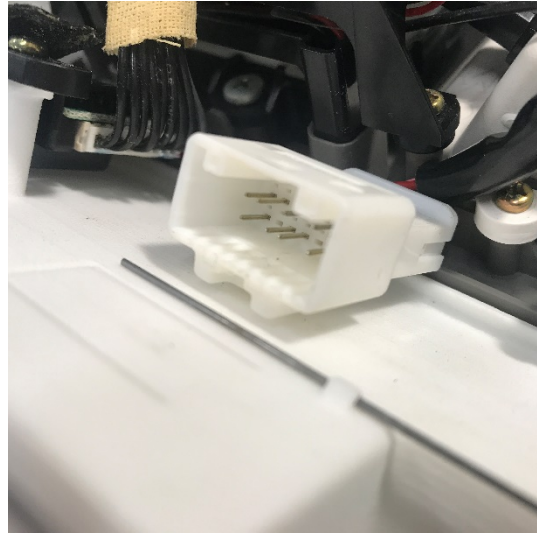
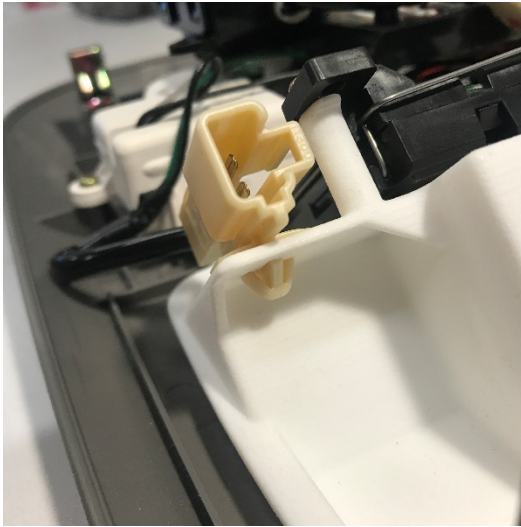


8. Unscrew the four console pocket screws in the red circles. Remove console pocket. (Non-HomeLink version shown below.)

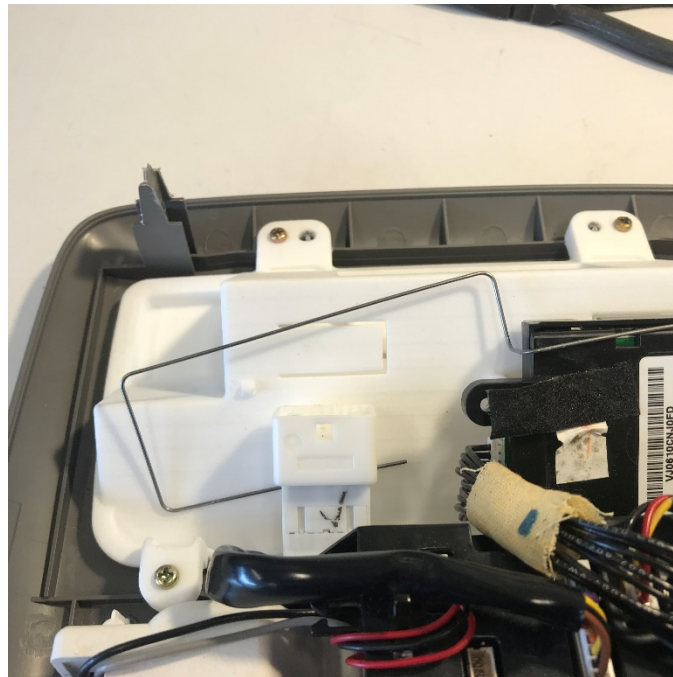


9. Place the ScanGauge Mount into the console. You may have to push the ScanGauge mount firmly into the console due to manufacturing tolerances. Install the four screws being sure not to over-tighten them.
10. If you have HomeLink, install the HomeLink box on the two posts, and insert connectors into the retaining holes/bosses.



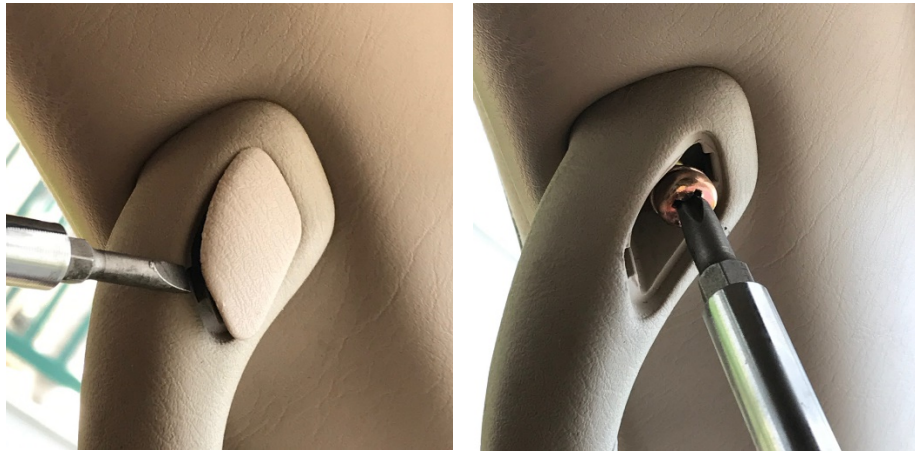


11. If you have HomeLink, position the HomeLink antenna under the white connector (shown below) and secure with tape to prevent rattles. It's OK that the antenna is angled, its operation is not effected.



- OBDII Wire Installation:

12. Remove driver's grab handle. Screw covers pry off easily to reveal mounting screws.



13. Remove trim above driver's door with a trim puller or your fingers. There are three push clips that will release when pulled hard enough. Note: You're most likely pulling towards your face, watch out when the clips release.



14. Find OBDII plug under dash above accelerator pedal and plug in ScanGauge cable.



15. Route cable under dash towards driver's A-pillar in such a way that it doesn't interfere with pedals, steering, etc. Try to be as direct as possible. Notes: There's lots of sharp sheet metal under there so be careful. Also, if you need to pull the wire backwards be careful not to catch and break off the connector's plastic release tab.
16. There is enough room to reach up below the A-pillar and pass the cable out above the dash.



17. Run the cable up the A-pillar and secure with zip-ties against the existing wire harness. Don't zip-tie around the clear sunroof drain tube.



18. Plug in the extension cable (white F-F coupler shown below), and position the connector(s) in the space between the grab handle mounts. Secure with zip-ties.



19. Run the extension cable a little farther up the A-pillar toward the roof, secure with zip-ties.

20. Again, be sure hands are clean before working around headliner.

21. Pry off sun visor mount cover and remove two screws. Disconnect vanity light connector.



22. Remove the sun shade and sun visor clip. Clip has one screw and a plastic push-in fastener. Remove screw and pull down hard until plastic fastener releases.



23. Headliner will now be loose enough to run the extension cable to the overhead console. Run the cable under the headliner in such a way that it won't get pinched when reinstalling sun visor parts. There is plenty of space along the front edge of the headliner near the windshield.

24. Reinstall sun visor clip, sun shade, sun visor, and screw cover. Don't forget to reconnect the vanity light connector.

25. Reinstall door trim by engaging trim at dashboard first, then rotating trim up above door. Keep trim tucked under the felt window lining. Position the three clips over their mounting holes and push hard on each until they click into place.

26. Install grab handle, screws, and screw covers.

- Console Installation:

27. Insert your ScanGauge into the mount, and press securely to engage Velcro.
28. Plug the cable into the back of the ScanGauge.
29. Plug in the connectors for the map lights, sunroof, and HomeLink.



30. Turn ignition to ACC and test operation of all switches, sunroof, and ScanGauge. Note: The ScanGauge will turn off after a few seconds if the engine isn't running.
31. Line up the four metal console clips and push the console up into the roof brackets until all four corners snap in.

