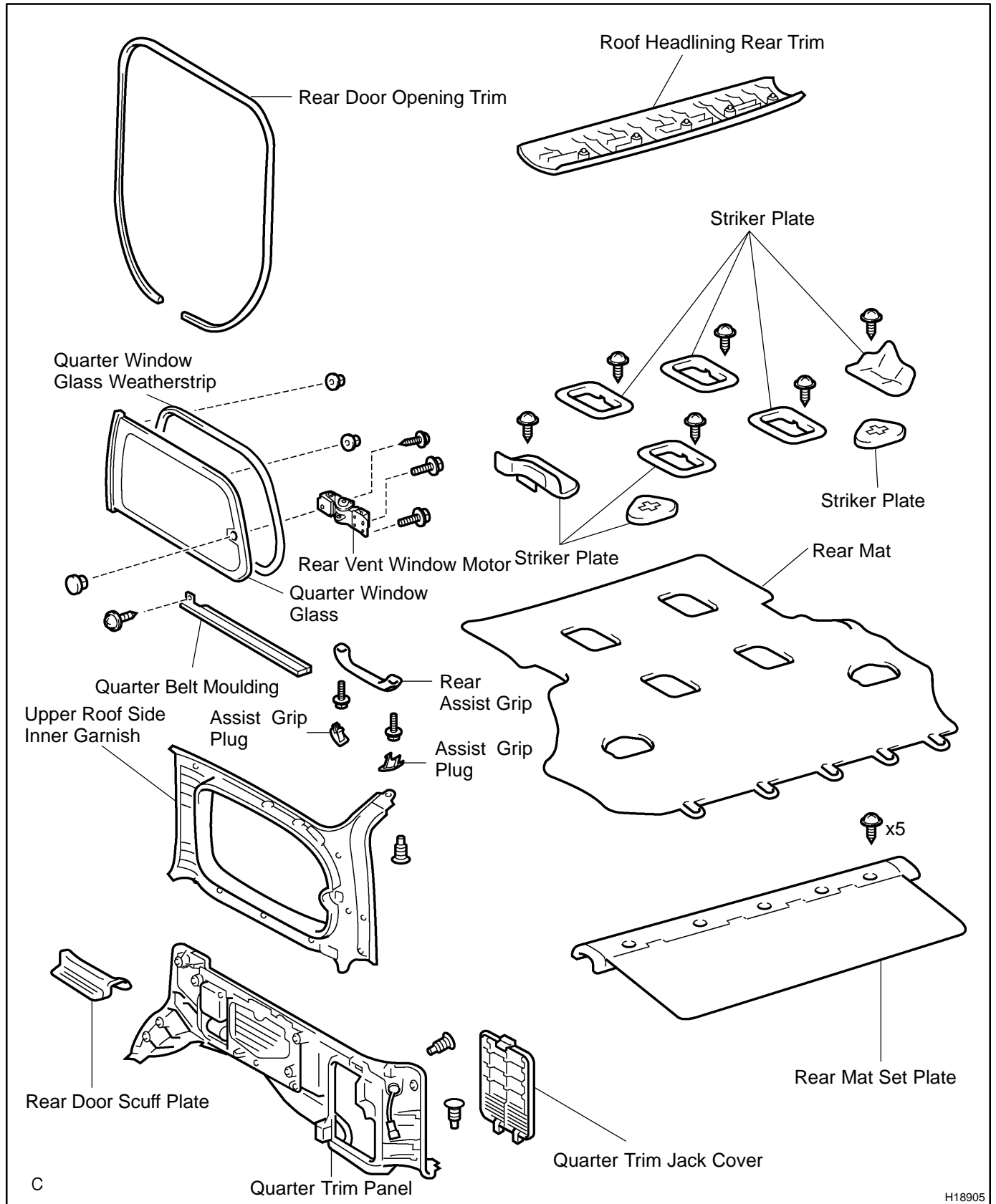


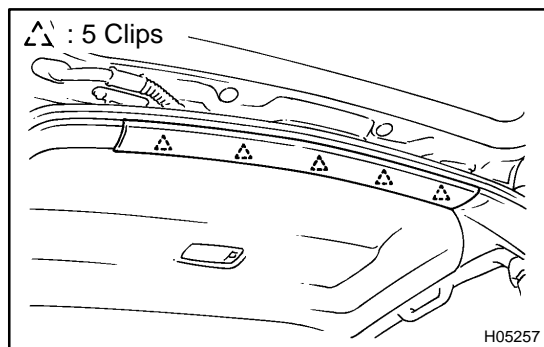
QUARTER WINDOW GLASS COMPONENTS

BO1LD-03



INSTALLATION

Installation is in the reverse order of removal (See page [BO-62](#)).



REMOVAL

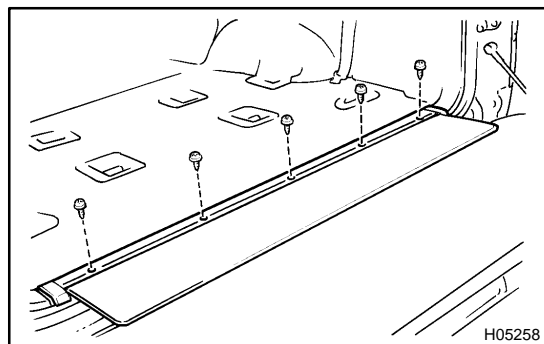
1. REMOVE ROOF HEADLINING REAR TRIM

Using a screwdriver, remove the roof headlining rear trim.

HINT:

Tape up the screwdriver tip before use.

2. REMOVE REAR NO. 2 SEATS



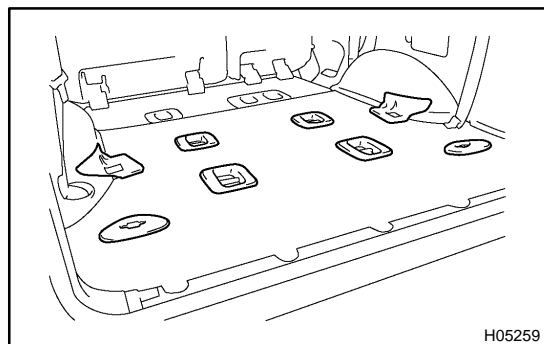
3. REMOVE REAR MAT SET PLATE

(a) Remove the 5 screws.

(b) Using a screwdriver, remove the rear mat set plate.

HINT:

Tape up the screwdriver tip before use.



4. REMOVE STRIKER PLATE

(a) Remove the 6 screws.

(b) Using a screwdriver, remove the striker plates.

HINT:

Tape up the screwdriver tip before use.

5. REMOVE REAR MAT

6. REMOVE REAR NO. 2 SEAT OUTER BELT FLOOR ANCHOR

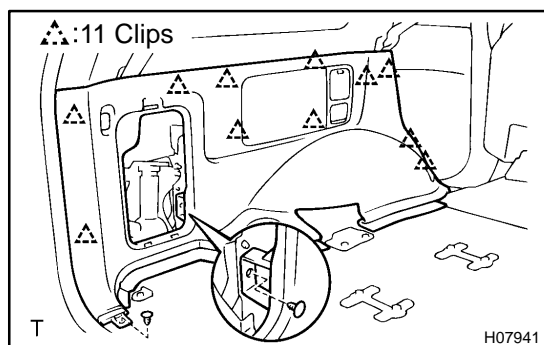
Torque: 42 N·m (430 kgf·cm, 31 ft·lbf)

7. REMOVE REAR NO. 1 SEAT OUTER BELT FLOOR ANCHOR

Torque: 42 N·m (430 kgf·cm, 31 ft·lbf)

8. REMOVE REAR DOOR SCUFF PLATE

9. REMOVE REAR DOOR OPENING TRIM



10. REMOVE QUARTER TRIM PANEL

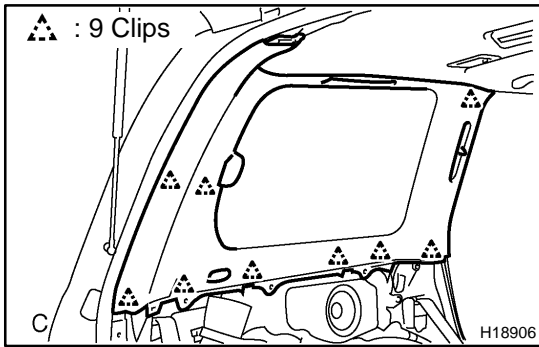
(a) Remove the quarter trim jack cover.

(b) Using a clip remover, remove the 2 clips.

(c) Remove the quarter trim panel, then disconnect the connector.

11. REMOVE REAR NO. 2 SEAT OUTER BELT SHOULDER ANCHOR

12. REMOVE REAR NO. 1 SEAT OUTER BELT SHOULDER ANCHOR

**13. REMOVE UPPER ROOF SIDE INNER GARNISH**

- (a) Using a screwdriver, remove the assist grip plugs, then remove the 2 screws and the rear assist grip.

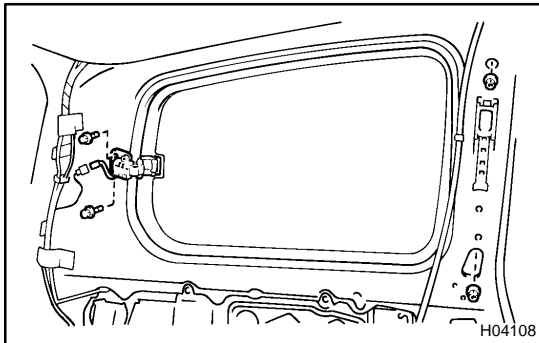
HINT:

Tape up the screwdriver tip before use.

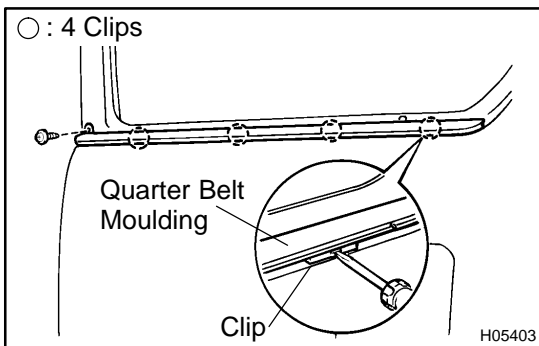
- (b) Using a clip remover, remove the clip.
 (c) Using a screwdriver, remove the upper roof side inner garnish.

HINT:

Tape the screwdriver tip before use.

**14. REMOVE QUARTER WINDOW GLASS**

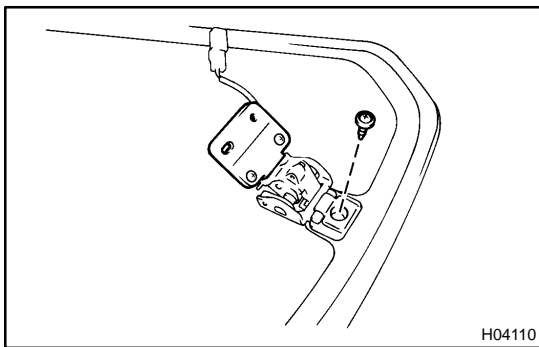
- (a) Disconnect the connector.
 (b) w/ Antenna:
 Disconnect the connector.
 (c) Remove the 2 bolts, the 2 nuts and the quarter window glass.

15. REMOVE QUARTER WINDOW GLASS WEATHERSTRIP**16. REMOVE QUARTER BELT MOULDING**

- (a) Remove the screw.
 (b) Using a screwdriver, remove the quarter belt moulding.

HINT:

Tape up the screwdriver tip before use.

**17. REMOVE REAR VENT WINDOW MOTOR**

Remove the screw and the rear vent window motor.

18. REMOVE QUARTER WINDOW LOCK

Remove the screw and the quarter window lock.