

OUTSIDE VEHICLE

GENERAL MAINTENANCE

9900V-21

HINT:

These are maintenance and inspection items which are considered to be the owner's responsibility.

They can be done by the owner or they can have them done at a service shop.

These items include those which should be checked on a daily basis, those which, in most cases, do not require special tools and those which are considered to be reasonable for the owner to do.

Items and procedures for general maintenance are as follows.

1. GENERAL NOTES

- Maintenance items may vary from country to country. Check the owner's manual supplement in which the maintenance schedule is shown.
- Every service item in the periodic maintenance schedule must be performed.
- Periodic maintenance service must be performed according to whichever interval in the periodic maintenance schedule occurs first, the odometer reading (miles) or the time interval (months).
- Maintenance service after the last period should be performed at the same interval as before unless noted.
- Failure to do even one of the items can cause the engine to run poorly and/or increase the exhaust emissions.

2. TIRES

- (a) Check the pressure with a gauge. If necessary, make adjustment.
- (b) Check for cuts, damage or excessive wear.

3. WHEEL NUTS

- (a) When checking the tires, check the nuts for looseness or for missing nuts. If necessary, tighten them.

4. TIRE ROTATION

- (a) Check the owner's manual supplement in which the maintenance schedule is shown.

5. WINDSHIELD WIPER BLADES

- (a) Check for wear or cracks whenever they do not wipe clean. If necessary, replace them.

6. FLUID LEAKS

- (a) Check the underneath of the vehicle for leaks of fuel, oil, water or other fluid.
- (b) If you smell gasoline fumes or notice any leak, find and correct the cause.

7. DOORS AND ENGINE HOOD

- (a) Check that all the doors and the back door operate smoothly, and that all the latches lock securely.
- (b) Check that the secondary latch on the engine hood prevents the hood from opening when the primary latch is released.

INSIDE VEHICLE

GENERAL MAINTENANCE

HINT:

These are maintenance and inspection items which are considered to be the owner's responsibility.

They can be done by the owner or they can have them done at a service shop.

These items include those which should be checked on a daily basis, those which, in most cases, do not require special tools and those which are considered to be reasonable for the owner to do.

Items and procedures for general maintenance are as follows.

1. GENERAL NOTES

- Maintenance items may vary from country to country. Check the owner's manual supplement in which the maintenance schedule is shown.
- Every service item in the periodic maintenance schedule must be performed.
- Periodic maintenance service must be performed according to whichever interval in the periodic maintenance schedule occurs first, the odometer reading (miles) or the time interval (months).
- Maintenance service after the last period should be performed at the same interval as before unless noted.
- Failure to do even one of the items can cause the engine to run poorly and/or increase the exhaust emissions.

2. LIGHTS

- (a) Check that the headlights, stop lights, taillights, turn signal lights, and other lights are all working.
- (b) Check the aim of the headlights.

3. WARNING LIGHTS AND BUZZERS

- (a) Check that all the warning lights and buzzers function properly.

4. HORN

- (a) Check that the horn works normally.

5. WINDSHIELD GLASS

- (a) Check for scratches, pits or abrasions.

6. WINDSHIELD WIPER AND WASHER

- (a) Check operation of the wipers and washer.
- (b) Check that the wipers do not streak.

7. WINDSHIELD DEFROSTER

- (a) Check that air comes out from the defroster outlet when operating the heater or air conditioner in the defroster mode.

8. REAR VIEW MIRROR

- (a) Check that the rear view mirror is mounted securely.

9. SUN VISORS

- (a) Check that the sun visors move freely and are mounted securely.

10. STEERING WHEEL

- (a) Check that the steering wheel has the specified free play. Be alert for changes in steering condition, such as hard steering, excessive free play or strange noises.

11. SEATS

- (a) Check that all the front seat controls such as seat adjusters, seatback recliner, etc. operate smoothly.
- (b) Check that all the latches lock securely in any position.
- (c) Check that the locks hold securely in any latched position.
- (d) Check that the head restraints move up and down smoothly and that the locks hold securely in any latched position.
- (e) Check that the latches lock securely, folding-down the rear seatbacks.

12. SEAT BELTS

- (a) Check that the seat belt system such as the buckles, retractors and anchors operate properly and smoothly.
- (b) Check that the belt webbing is not cut, frayed, worn or damaged.

13. ACCELERATOR PEDAL

- (a) Check the pedal for smooth operation, uneven pedal effort or catching.

14. BRAKE PEDAL (See page 32-6)

- (a) Check the pedal for smooth operation.
- (b) Check that the pedal has the proper reserve distance and free play.
- (c) Check the brake booster function.

15. BRAKES

- (a) At a safe place, check that the brakes do not pull to one side when applied.

16. PARKING BRAKE (See page 33-2)

- (a) Check that the lever has the proper travel.
- (b) On a safe incline, check that the vehicle is held securely with only the parking brake applied.

17. AUTOMATIC TRANSMISSION "PARK" MECHANISM

- (a) On a safe incline, check that the vehicle is held securely with the selector lever in the "P" position and all the brakes released.

UNDER HOOD

9900X-20

GENERAL MAINTENANCE

1. GENERAL NOTES

- Maintenance items may vary from country to country. Check the owner's manual supplement in which the maintenance schedule is shown.
- Every service item in the periodic maintenance schedule must be performed.
- Periodic maintenance service must be performed according to whichever interval in the periodic maintenance schedule occurs first, the odometer reading (miles) or the time interval (months).
- Maintenance service after the last period should be performed at the same interval as before unless noted.
- Failure to do even one of the items can cause the engine to run poorly and/or increase the exhaust emissions.

2. WINDSHIELD WASHER FLUID

- (a) Check that there is sufficient fluid in the tank.

3. ENGINE COOLANT LEVEL

- (a) Check that the coolant level is between the LEVEL lines on the see-through reservoir at normal temperature (20°C (68°F)).

4. RADIATOR AND HOSES

- (a) Check that the front of the radiator is clean and not blocked by leaves, dirt or bugs.
- (b) Check the hoses for cracks, kinks, rot or loose connections.

5. BATTERY ELECTROLYTE LEVEL

- (a) Check the indicator.
- (b) Check that the electrolyte level of all the battery cells is between the upper and lower level lines on the case.

6. BRAKE FLUID LEVEL

- (a) Check that the brake fluid levels are near the upper level line on the see-through reservoirs.

7. ENGINE DRIVE BELT

- (a) Check the drive belt for fraying, cracks, wear or oiliness.

8. ENGINE OIL LEVEL

- (a) Check the level on the dipstick with the engine turned off.

9. POWER STEERING FLUID LEVEL

- (a) Check the level on the dipstick.
- (b) The level should be in the "HOT" or "COLD" range depending on the fluid temperature.

10. AUTOMATIC TRANSMISSION FLUID LEVEL

- (a) Visually check the overflow plug and oil pan for fluid leaks or traces of fluid.

11. EXHAUST SYSTEM

- (a) Visually inspect for cracks, holes or loose supports.

If any change in the sound of the exhaust or the smell of the exhaust fumes is noticed, locate and correct the cause.

ENGINE

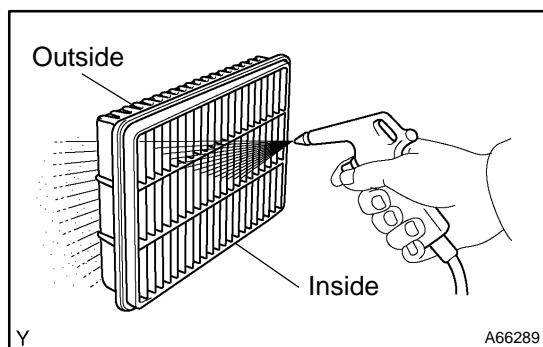
ON-VEHICLE INSPECTION

9900Y-30

HINT:

Inspect these items when the engine is cold.

1. **REPLACE TIMING BELT (See page 14-115)**
2. **INSPECT DRIVE BELT (See page 19-13)**
3. **REPLACE SPARK PLUGS (See page 18-1)**



4. **Canada:**
INSPECT AIR FILTER

- (a) Remove the air filter.
- (b) Visually check that the air filter is not excessively damaged or oily.

HINT:

Oiliness may indicate that the PCV valve is stuck.

If necessary, replace the air filter.

- (c) Clean the filter with compressed air.
First blow from the inside thoroughly, and then blow from the outside of the filter.
- (d) Reinstall the air filter.

5. **REPLACE AIR FILTER**

- (a) Replace the air filter with a new one.

6. **REPLACE ENGINE OIL AND OIL FILTER (See page 17-4)**

7. **REPLACE ENGINE COOLANT (See page 16-5) AND INSPECT RADIATOR FIN**

- (a) Check that the radiator and condenser are not blocked with leaves, dirt, or insets, and clean the hose connection.

8. **INSPECT GASKET IN FUEL TANK CAP (See page 12-3)**

9. **California, Massachusetts and New York:**
INSPECT CHARCOAL CANISTER (See page 12-3)

10. **INSPECT FUEL LINES AND CONNECTIONS, FUEL TANK VAPOR VENT SYSTEM HOSES AND FUEL TANK BANDS**

- (a) Visually check the fuel lines for cracks, leakage, loose connections, deformation or tank band looseness.

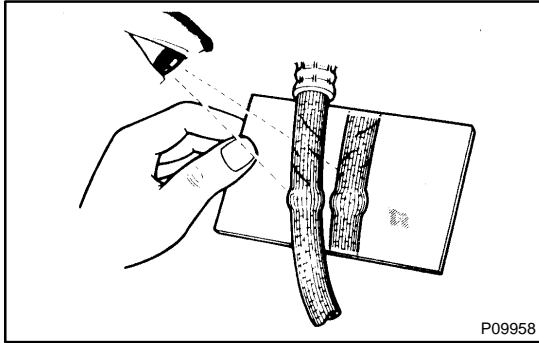
11. **INSPECT EXHAUST PIPES AND MOUNTINGS**

- (a) Visually check the pipes, hangers and connections for severe corrosion, leaks or damage.

12. **INSPECT VALVE CLEARANCE (See page 14-6)**

BRAKE

ON-VEHICLE INSPECTION

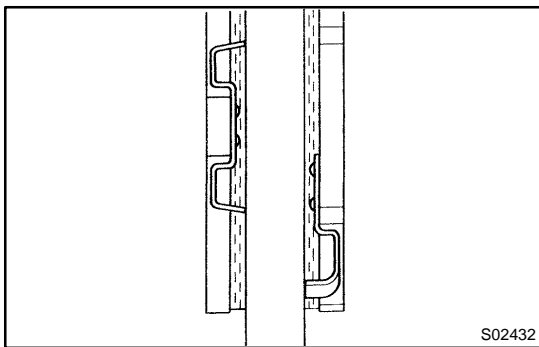


1. INSPECT BRAKE LINE PIPES AND HOSES

HINT:

Check in a well-lighted area. Check the entire circumference and length of the brake hoses using a mirror as required. Turn the front wheels fully right or left before checking the front brakes.

- (a) Check all the brake lines and hoses for:
 - Damage
 - Wear
 - Deformation
 - Cracks
 - Corrosion
 - Leaks
 - Bends
 - Twists
- (b) Check all the clamps for tightness and connections for leakage.
- (c) Check that the hoses and lines are clear of sharp edges, moving parts and the exhaust system.
- (d) Check that the lines are installed in grommets pass through the center of the grommets.



2. INSPECT FRONT BRAKE PADS AND DISCS (See page 32-38)

HINT:

If a squealing or scraping noise is heard from the brakes while driving, check the pad wear indicator.

If there are traces of the indicator contacting the disc rotor, the disc pad should be replaced.

3. INSPECT REAR BRAKE PADS AND DISCS (See page 32-44)
4. INSPECT REAR BRAKE LININGS AND DRUMS (See page 33-12)
5. INSPECT OR CHANGE BRAKE FLUID (See page 32-4)
Fluid: SAE J1703 or FMVSS No.116 DOT3

CHASSIS

9901N-05

ON-VEHICLE INSPECTION

1. INSPECT STEERING LINKAGE

- (a) Check the steering wheel free play (see page 50-3).
- (b) Check the steering linkage for looseness or damage.
 - (1) Check that the tie rod ends do not have excessive play.
 - (2) Check that the dust seals and boots are not damaged.
 - (3) Check that the boot clamps are not loose.

2. INSPECT STEERING GEAR HOUSING OIL

- (a) Check the steering gear housing for oil leakage.

If leakage is found, check and repair the cause.

3. INSPECT BALL JOINTS AND DUST COVERS

- (a) Inspect the ball joints for excessive looseness.
- (b) Check the dust cover for damage.

4. INSPECT DRIVE SHAFT BOOTS

- (a) Check the drive shaft boots for clamp looseness, oil leakage or damage. Tighten bolt looseness.

5. CHECK OIL LEVEL IN TRANSFER AND DIFFERENTIAL

- (a) Remove the filler plug and feel inside the hole with your finger. Check that the oil comes to within 5 mm (0.20 in.) from the bottom edge of the hole.

If the level is low, add oil until it begins to run out of the filler hole, replace as necessary.

6. CHECK FLUID LEVEL IN AUTOMATIC TRANSMISSION (See page 40-2)

7. REPACK FRONT WHEEL BEARINGS AND DRIVE SHAFT BUSHING GREASE

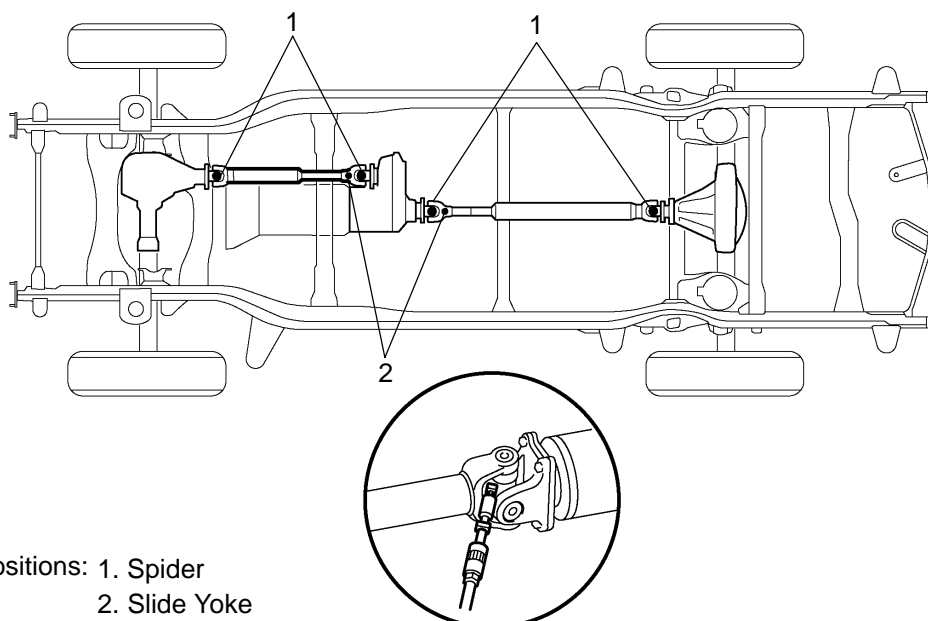
- (a) Change the front wheel bearing grease (see page 30-28).
- (b) Repack the drive shaft bushing grease (see page 30-19).

8. LUBRICATE PROPELLER SHAFT AND TIGHTEN BOLTS

- (a) Lubricate propeller shaft, referring to the lubrication chart. Before pumping in grease, wipe off any mud and dust on the grease fitting.

Grease grade:

Lithium base chassis grease (NLGI No. 2)



Lubricating Positions: 1. Spider
2. Slide Yoke

Y

D30371

(b) Tighten the bolts for propeller shaft (see page [30-12](#)).

9. ROTATE TIRES (See page [28-1](#))

BODY

ON-VEHICLE INSPECTION

9901B-14

1. Canada:

TIGHTEN BOLTS AND NUTS ON CHASSIS AND BODY

- (a) Where necessary, tighten all the parts of the chassis.
 - Steering system
 - Drive train
 - Suspension
 - Brake system
 - Engine mounting, etc.
- (b) Where necessary, tighten all the parts of the body.
 - Seat belts
 - Seats
 - Doors and hood
 - Body mountings
 - Fuel tank
 - Exhaust pipe system, etc.

2. **REPLACE AIR CONDITIONING FILTER**

- (a) Remove the glove compartment assembly.
- (b) Remove the filter case by holding both sides.
- (c) Remove the filter from the filter case.
- (d) Replace the filter with a new one.
- (e) The installation is in the reverse order of the removal.

3. **BODY INSPECTION**

- (a) Check the body exterior for dents, scratches and rust.
- (b) Check the underbody for rust and damage.

If necessary, replace or repair.

4. **ROAD TEST**

- (a) Check the engine and chassis for abnormal noises.
- (b) Check that the vehicle does not wander or pull to one side.
- (c) Check that the brakes work properly and do not drag.
- (d) Do setting of the parking brake shoes and drum.

5. **FINAL INSPECTION**

- (a) Check the operation of the body parts:
 - Hood:
 - Auxiliary catch operates properly
 - Hood locks securely when closed
 - Front and rear doors:
 - Door locks operate properly
 - Doors close properly
 - Back door:
 - Door lock operates properly
 - Seats:
 - Seat adjusts easily and locks securely in any position
 - Front seat back locks securely in any position
 - Folding-down rear seat backs lock securely

- (b) Be sure to deliver a clean car. Especially check:
- Steering wheel
 - Shift lever knob
 - All switch knobs
 - Door handles
 - Seats