



Expedition Fuel Tank Product Guide



Tacoma – US Spec

2005 – 2017

Quad Cab Short Box (see note)



Long Range Automotive Replacement Main Tank Kit – 34 gallons

\$1,495
Suggested Retail

TTACDCR

Direct-fit extended range fuel tank to serve expedition, long-distance travel and hauling needs. Buy fuel when the price is right and be prepared for the long haul.

Built by specialists with two decades of experience, serving customers around the world.

- Increase stock fuel capacity by 65%
- Constructed of 2mm thick T125CQ aluminized steel
- Retains OEM vehicle emissions system
- Full internal baffling
- 3 year US warranty
- Tank extends 4 inches below chassis
- Estimated installation time 6 hours (minimum)



Based in Melbourne, Australia, Long Range Automotive uses the latest 3D modeling software to design and build over 200 different tank models. Precision CAD 3D models and drawings are produced for all tanks. LRA uses a 'HyPertherm HyPerformance' CNC plasma profile cutting system with 'True Hole' technology to ensure accuracy. All welds are full penetration corner to corner MIG welded, using a high quality inert shielding gas and level layer wound MIG wire to ensure good welding penetration and exclusion of porosity in the weld. Tanks are fully internally baffled and an expansion chamber is incorporated in the design of the tank.

All tanks are pressure tested and checked by two separate quality control procedures. Every kit includes brass threaded hose barb fittings, stainless steel hose clamps and high tensile bolts with nyloc nuts.



Proudly imported and distributed by **Cruiser Brothers, LLC**

1038 West Fremont Street, Stockton, California 95203

CruiserBrothers.com

1-800-224-7801

Call us today!



TTACDCR Additional Information



A tank and a team you can trust

- **Additional product information:**

- **NOTE :**

- Manual transmission / long bed vehicles may require minor modifications to fit***

- No exhaust modifications required
 - Kit includes all fittings and parts, with instructions
 - More about T125C aluminized steel https://en.wikipedia.org/wiki/Aluminized_steel

- **Shipping information:**

- Tanks ship from Stockton, California by motor freight, wrapped and strapped to a standard pallet
 - Single tank shipping varies from \$150 to \$300 within Continental US – shipped to our freight line's local terminal for pick up or to shops with fork lift / loading dock

- **Important disclosures:**

- This product is designed to fit standard, unmodified vehicles. Sliders, bumpers, suspensions and other modifications may affect fitment, installation and operation. Please consult Cruiser Brothers or your shop to discuss.
 - This product is NOT FOR SALE TO CALIFORNIA RESIDENTS
 - This product is for OFF ROAD USE ONLY
 - This product has not been approved, certified, rated or otherwise passed upon by any federal or state regulatory agency, nor has it been tested or approved by any testing or certification body.
 - Neither Long Range Automotive or Cruiser Brothers, LLC have any control over the installation or use of this product. Cruiser Brothers, LLC highly recommends that certified professionals install this products described herein.
 - Buyers must rely upon their own skill and judgment in evaluating the installation of this product and are solely responsible for the product's use.

Parts that Get You Home

Cruiser Brothers, LLC is proud to support a range of Australian manufacturers as importers and distributors of unique and proven solutions for offroad travel, towing and extreme conditions. Since 2015, we have partnered with leading brands that include **Terrain Tamer**, **Harrop Engineering**, **Long Range Automotive**, **Wholesale Automatic Transmissions** and **FlashLube**. Visit or call us at:

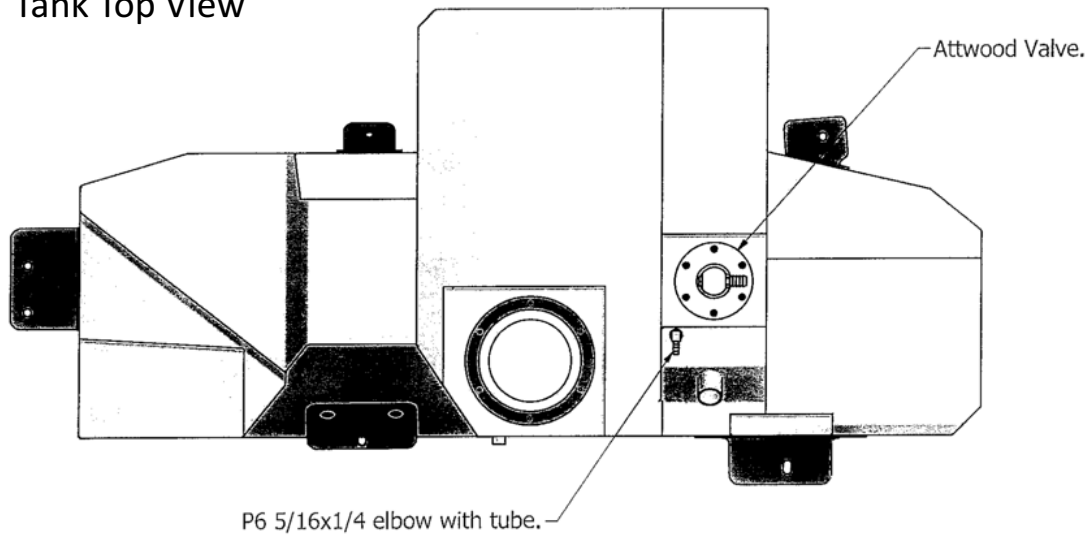
CruiserBrothers.com or **1-800-224-7801**



TTACDCR Kit Contents



Tank Top View



Included Parts

Brass	
<ul style="list-style-type: none"> 1 x P6 5/16 x 1/4 Elbow with 5/15 Bundy tube 80mm long 	
Bolts / Nuts	Misc Parts
<ul style="list-style-type: none"> 3 x M8 x 20 Bolt 5 x M10 x 30 Bolt 6 x M8 x 25 Washer 10 x M10 x 25 Washer 1 x M10 Spring Washer 3 x M8 Nyloc Nut 5 x M10 Nyloc Nut 6 x M5 x 8 Cap Screws 6 x M5 x 8mm Pan Head Screws 1 x M10 x 30 bolt with 150mm strap 1 x M10 x 30 1.25p 14mm Head Bolt 12 x M5 Washers 	<ul style="list-style-type: none"> 1 x BS356 O Ring 1 x Front Secondary Bracket 1 x Rear Secondary Bracket 1 x Hold Down Ring 1 x Attwood Valve 99FLN080-1 with 1/4 plug and 1 x BS377 O Ring 1 x LRA Modified Back Flow Valve 1 x Reinforcing plate for front inboard mount with M10 Nut welded <p>4 Pages Fitting Instructions Consisting of:</p> <ul style="list-style-type: none"> 2 Page Fitting Instructions 1 Page Fitting Kit Contents 1 Page Fitting Layout Drawing
Hose	Cable Ties
<ul style="list-style-type: none"> 1 x 19mm Fuel Hose @ 400mm 1 x 8mm Hose @ 200mm 2 x 8mm EFI Hose @ 800mm 2 x 16mm Conduflex @ 800mm 	<ul style="list-style-type: none"> 2 x 14" Ties
Hose Clamps	
<ul style="list-style-type: none"> 2 x 1" Clamps 6 x EFI Hose Clamps 	



TTACDCR Installation Instructions



INTRODUCTION

The easiest way to install this tank is to remove the truck bed. It is also possible to complete the installation without doing so, but we recommend bed removal in order to shorten install time and reduce/eliminate potential for kinked supply and return/vent hoses

The bed is made of composite plastic and weights less than steel. Two techs will take less than twenty minutes to remove in most cases.

PREPARATION

1. Remove driveshaft
2. OPTIONAL To remove the bed:
 1. Remove fuel cap, press in on the fuel neck to depress.
 2. Unbolt fuel neck.
 3. Remove tail light housings with 10mm socket.
 4. Leave bulbs in housing, just unclip harness and feed down into hold in bed, removing retainer clip.
 5. Remove harness from clips beneath the bed.
 6. Use a torque socket to remove six bolts on bed.
 7. Lift off and set aside.

TANK REMOVAL

3. Disconnect the pickup and return lines near the front of the tank.
4. Disconnect the filler hose and 8mm breather at the front of the wheel arch.
5. Unclip the fuel vapor line from the charcoal canister.
6. Remove straps and lower the tank partly down, unclip the wiring from the pump assembly.
7. Remove the tank from the vehicle.

TANK PREPARATION

8. Trim the front spring eye bolt flush with nut on LH Side.
9. Screw fittings into tank as per drawing. Place magnet in tank and close to entry point of swirl pot. Trim the small tab from the edge of the pump assembly. Fit to the tank with a new "O" ring, facing the float on the pump assembly to the rear of the tank.
10. Carefully remove the plastic lines from the connectors on the pump assembly using a sharp knife. Fit the new EFI hose with clamps to the connectors. Be careful not to mix them up, as they are the same size. Also remove the 8mm breather hose from the tank, cut off the plastic line and fit the new 200mm length of 8mm hose, connect to P6 5/16 x 1/4 fitting on top of the tank with clamp.



TTACDCR Installation Instructions



TANK INSTALLATION

11. Bolt the front cross member support plate to the car using 2, M8 x 20 bolts from the rear face of member.
12. Fit the rear inboard secondary bracket using one of the OEM inside strap mount holes, M8 x 20 bolt, and two M10 x 30 bolts, one with strap welded on.
13. Fit the filler hose to the tank. Loosen the drive shaft and move to one side while fitting the tank.
14. Jack the tank into position stopping part way to feed the fuel pump lines between cross member and chassis rail.
15. Connect the lines at this time. Also connect the pump assembly wiring. Feed the fill hose onto the neck as you jack into position.
16. MAKE SURE NOT TO KINK FILL OR VENT HOSES
17. Screw M10 x 30 fine thread bolt with the 14mm head into front outside mount, using OEM M10 strap bolt for rear outside mount and new M10 x 30 bolt washer and nyloc for inside rear.
18. Once these three mounts are secure, drill inside front mount and secure with M10 x 30 bolt and plate with nut welded on.
19. Drill remaining 2 front holes and secure with M10 x 30 bolts, nuts and washers.
20. Carefully remove the plastic connector from one end of line which goes to the charcoal canister, refit to new 19mm hose.
21. The other end of hose connects to the fill limit valve. Secure with 1"clamps.
22. Refit the emission line to the charcoal canister.
23. Connect the 8mm breather. You will need to unclip the breather line from the filler so that there are no low points in the line.
24. Tighten the filler hose.
25. OPTIONAL To reinstall the bed:
 - a) Set bed on frame.
 - b) Position and reinstall wiring/clips
 - c) Reinstall six bed bolts
 - d) Reinstall/attach tail light housings
 - e) Rebolt fuel neck.
 - f) Replace fuel cap.
26. Refit the drive shaft. Fill with fuel and check for leaks.

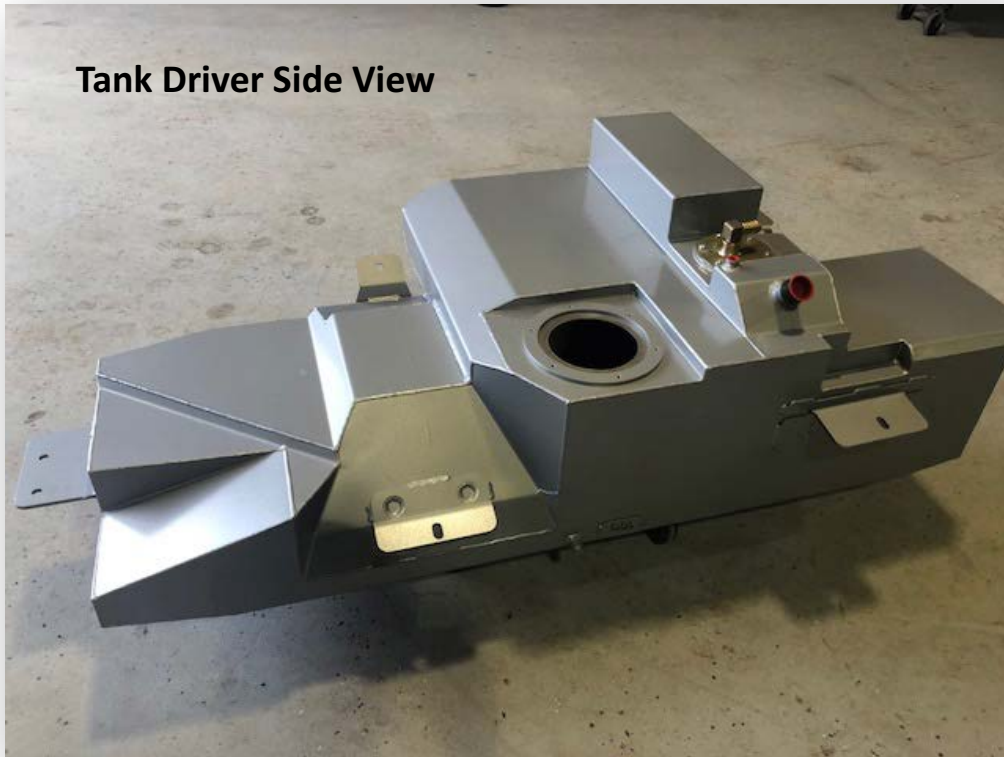
**DO NOT OVERFILL OR "TOP OFF" TANK WHEN FILLING –
DAMAGE TO YOUR EMISSION SYSTEM MAY RESULT**



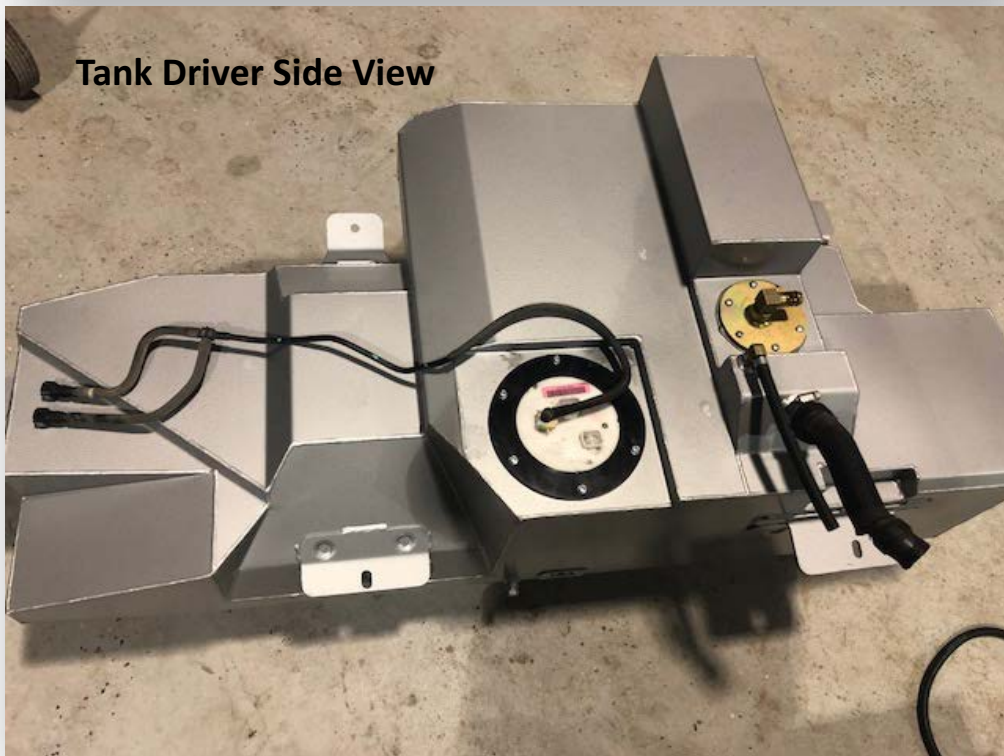
TTACDCR Installation Instructions



Tank Driver Side View



Tank Driver Side View





TTACDCR Installation Instructions

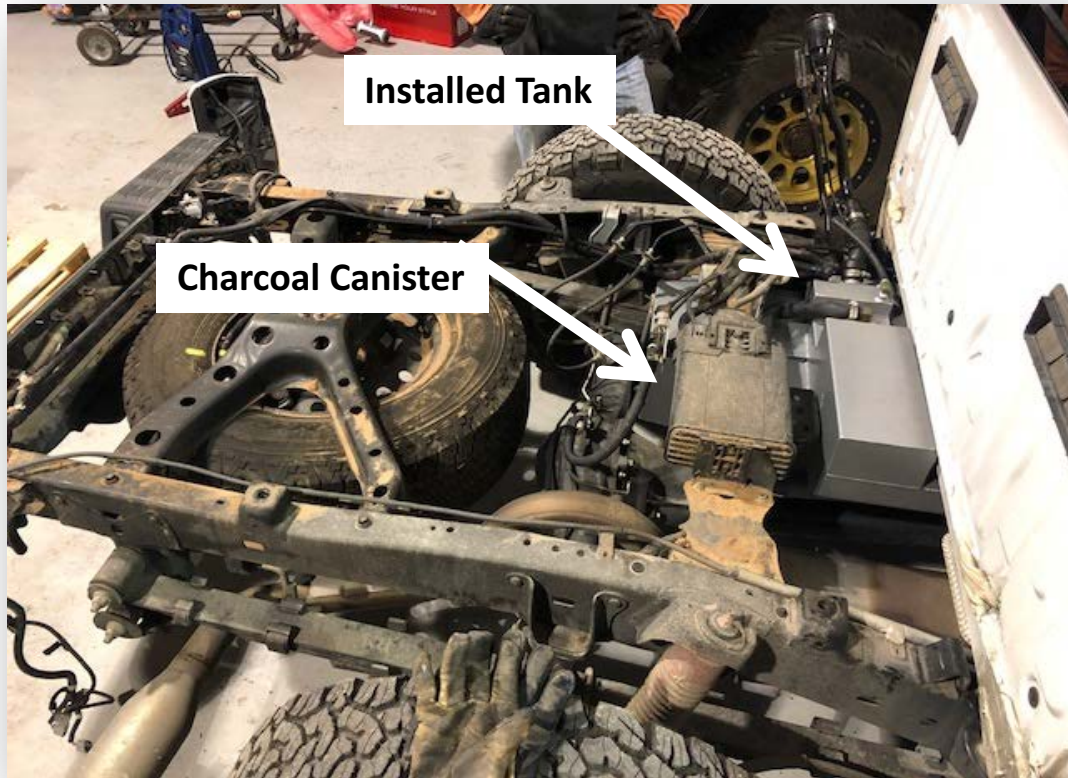


Fuel Inlet & Vent - Driver Side View



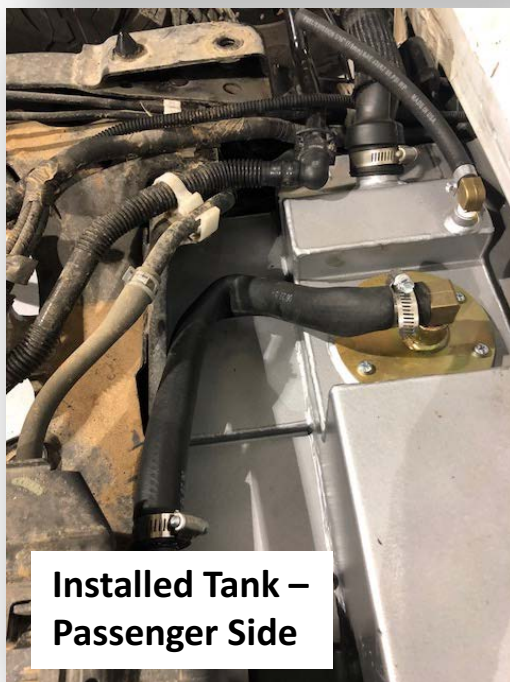


TTACDCR Installation Instructions



Installed Tank

Charcoal Canister



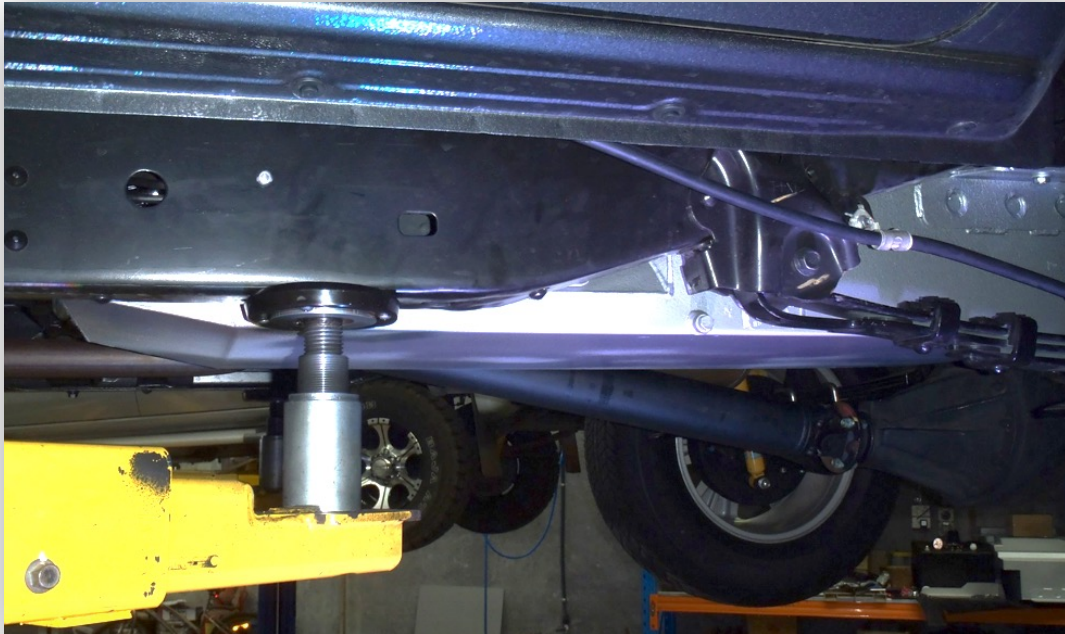
**Installed Tank –
Passenger Side**



**Installed Tank –
Driver Side**



TTACDCR Installation Instructions





TTACDCR Installation Instructions

