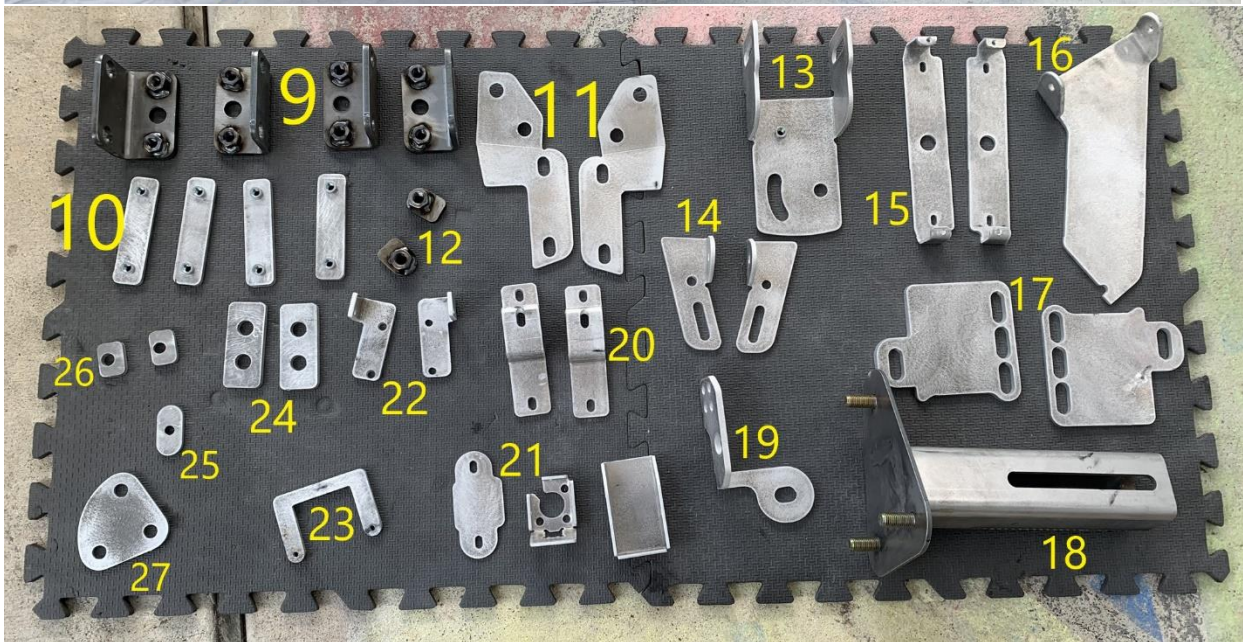
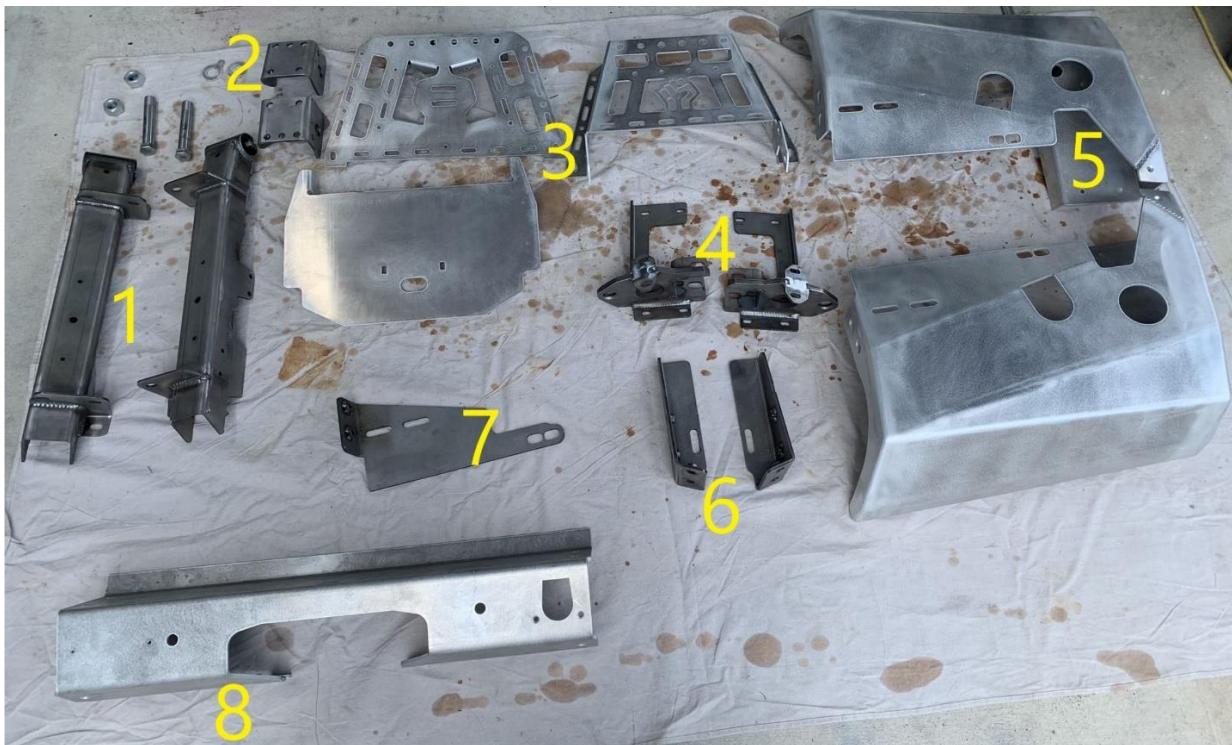
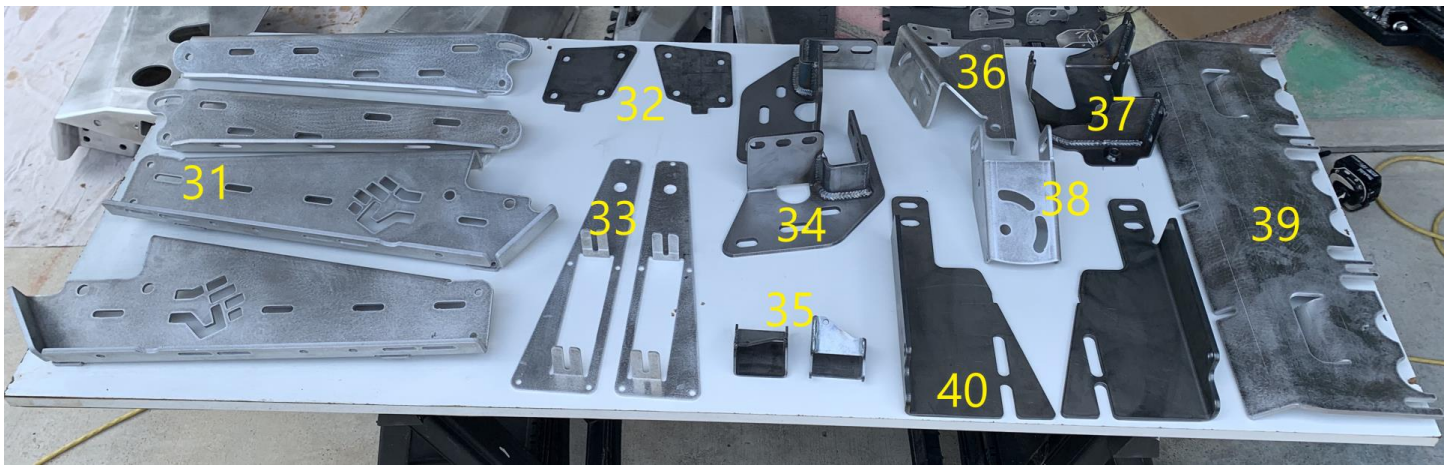


Parts Identification:







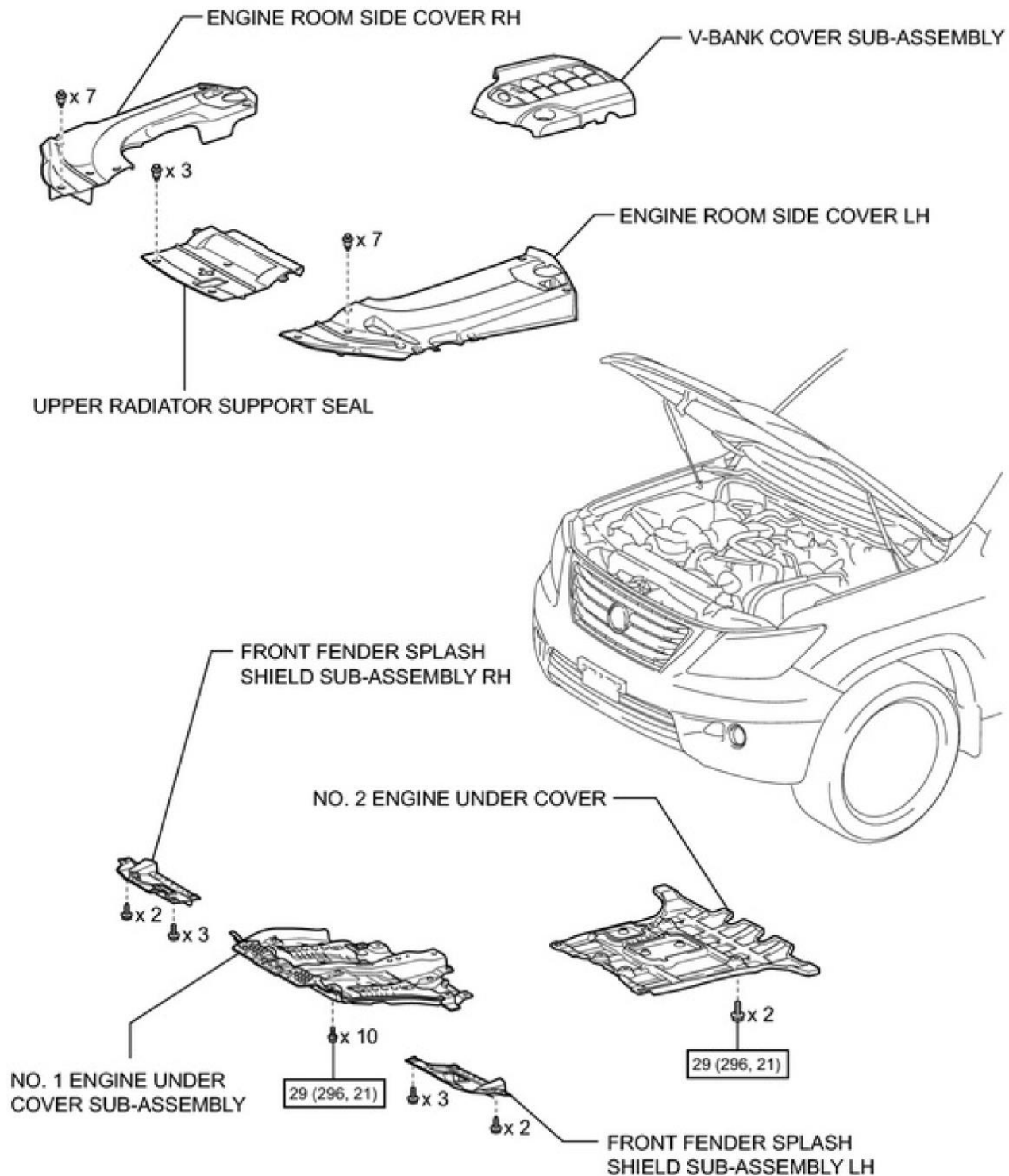
- 1) Swingarms
- 2) Swingarm Brackets
- 3) Tire Carrier Components
- 4) Rear Recovery Points
- 5) Rear Wings
- 6) Rear Wing stiffener
- 7) Rear AHC Wing Stiffener
- 8) Rear Center Section
- 9) Swingarm reinforcements
- 10) Rear double nutplate
- 11) Tire Carrier Reinforcement
- 12) Rear Recovery Point Nutplate
- 13) tire carrier
- 14) Table Hinges
- 15) Rear Light Bracket
- 16) Table Stand
- 17) Front Spacer
- 18) Tire Carrier
- 19) Winch Control Box Mount
- 20) License Plate Relocation Brackets
- 21) Rear Camera Relocation
- 22) Swingarm Spring Brackets
- 23) Trailer Plug Stiffener back plate
- 24) Rear Wing Washer
- 25) Table Lock
- 26) Rear Center Section Spacer
- 27) Tire Carrier reinforcement
- 28) Front Wings
- 29) Front Recovery Points
- 30) Front Recovery Point Caps
- 31) Accessory Risers
- 32) Front Wing Caps
- 33) Front Light brackets
- 34) Front Recovery Point Reinforcement
- 35) Swing Arm Handle
- 36) Hi-Lift Mount
- 37) AHC Bracket
- 38) Tire Carrier
- 39) Radiator Protection Plate
- 40) Rear Wing Stiffener

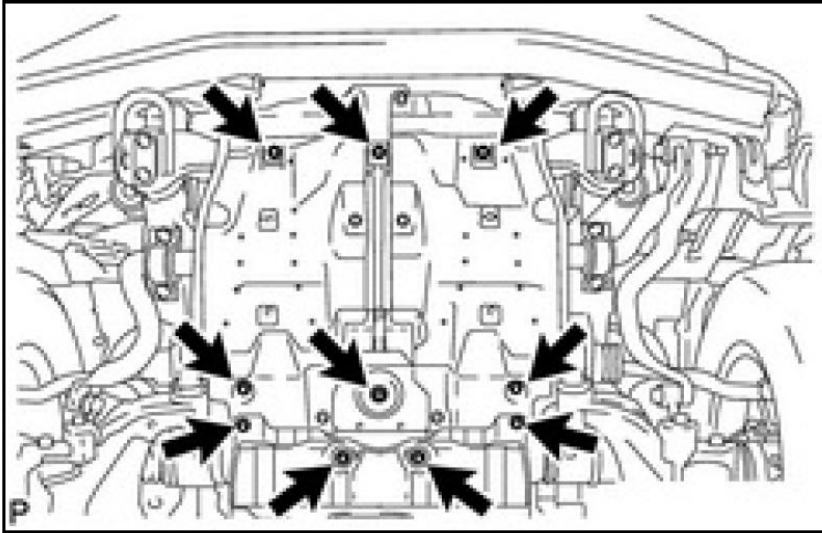
## Recommended Tools

- 1) Taps: 7/16" 14 and 1/4" – 20
- 2) Blue Thread locker
- 3) Thread anti-seize
- 4) Oscillating tool for cutting bumper trim
- 5) .
- 6)

## Front Preparation:

- 1) Remove factory skid plates, front tow hooks, engine side covers, and upper radiator cover.





2) Reach down and unclip washer hose and electrical harness from lower radiator grill (approximately 8 clips):



3) Cut bumper

- Stretch tape from bottom of grill chrome as center reference line.
- Bottom of grill chrome over to fog light corner
- Across top of fog lights
- Corner of fog light to fender. Measure 3" below the second fender screw and use this as your fender reference
- Disconnect front wire harness from frame. The white clip lifts up to unlock the harness





- This is a rough cut. Final cut will be made after bumper is mounted.
- Once the lower section of the bumper has been removed, you can disconnect the parking sensors and unclip the harness from the factory fog lights.





- 4) Remove crash bar
- Remove 8 M10 nuts holding the aluminum crash bar to the frame.

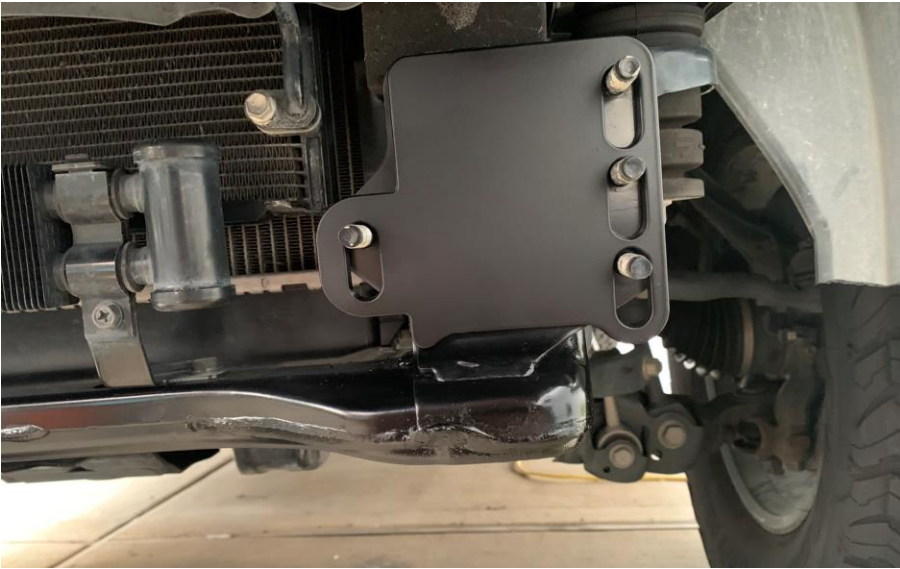




- 5) Install recovery points
  - a) Place spacer over Crashbar studs (for LX or if applicable)







- b) Place recovery point over Spacer
- cut a notch large enough to mount recovery point. The final cut will be about  $\frac{3}{4}$ " above the top of the recovery point, so don't cut the notch too big.



- c) Place Recovery Point Reinforcement bracket.
- Note: do not use factory flange nuts if you're using a Spacer (LX)



- d) Hand tighten nuts and allow everything to hang from the factory studs.
- e) Insert two 10.9 M12 bolts from below into the factory tow point holes. This will raise the Reinforcement Bracket into place.
- f) Repeat for both sides



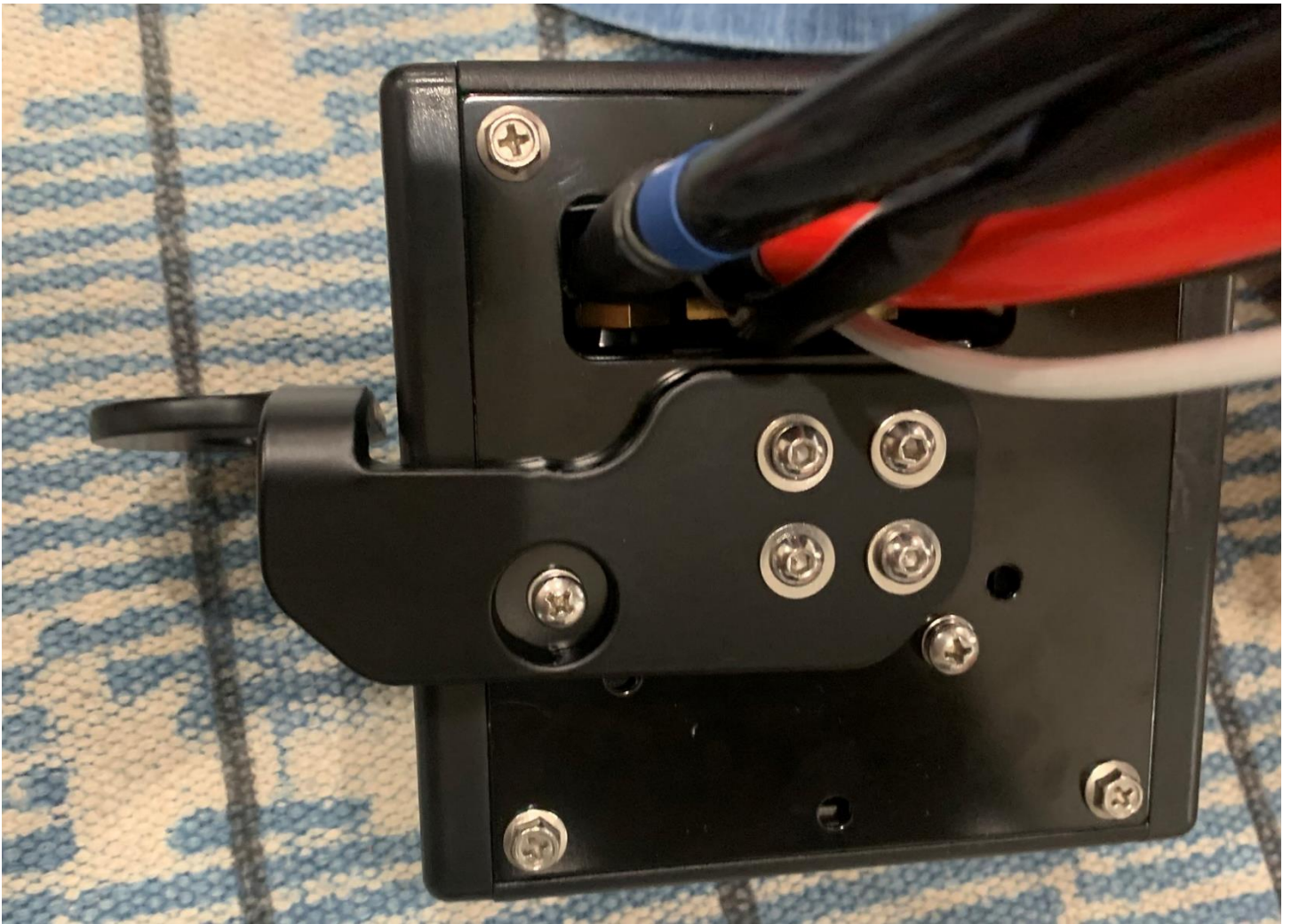


- 6) Mark new reference line  $\frac{3}{4}$ " above the top of both Recovery Points
- Cut trim at new reference.



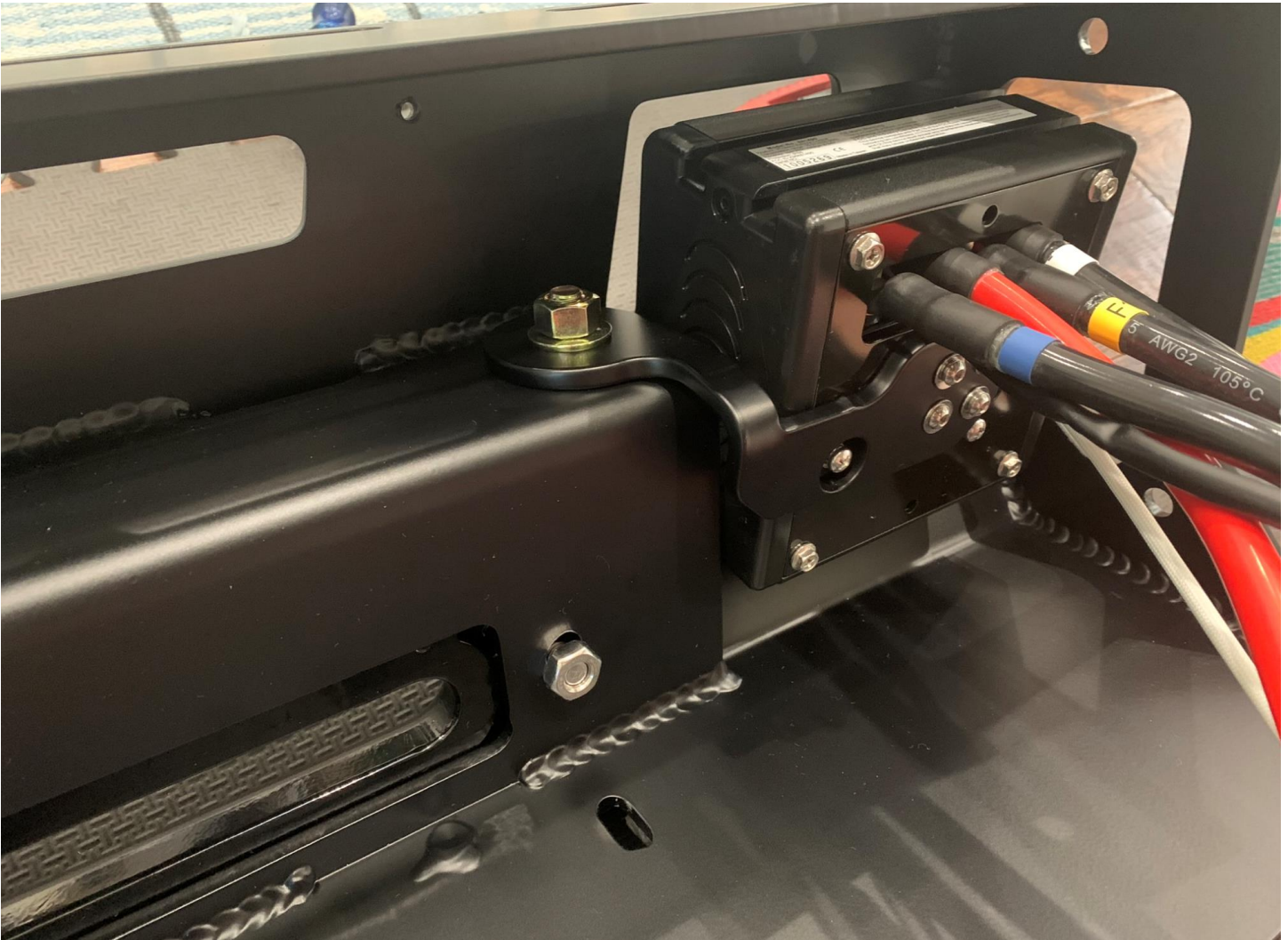
- 7) Prepare Center section with Winch
  - a) Install mount to winch control unit





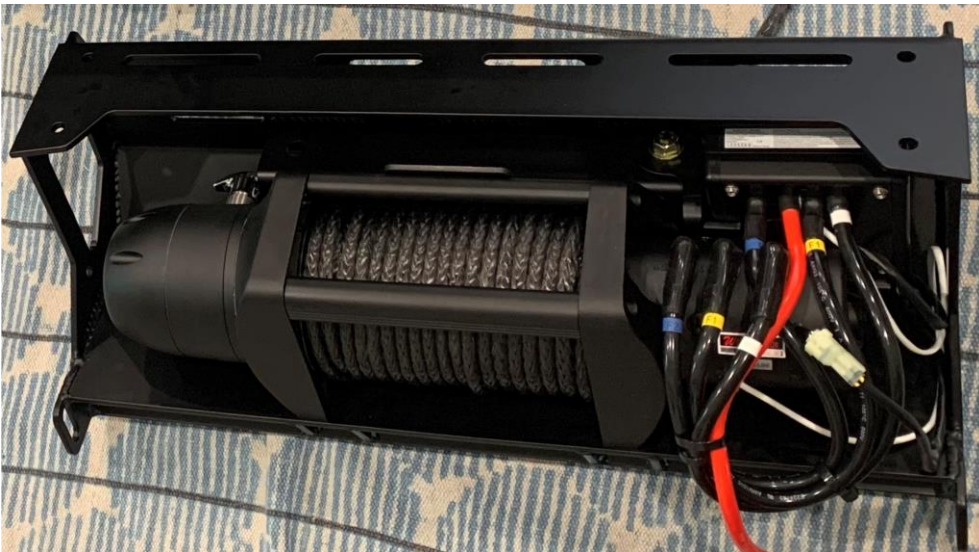
b) Install control unit to Bumper

c) Install Winch Fairlead



d) Install Winch

- Winch bolts must be 35-40mm in length. Use washer, lock washer, and thread locker



8) Mounting the Center section



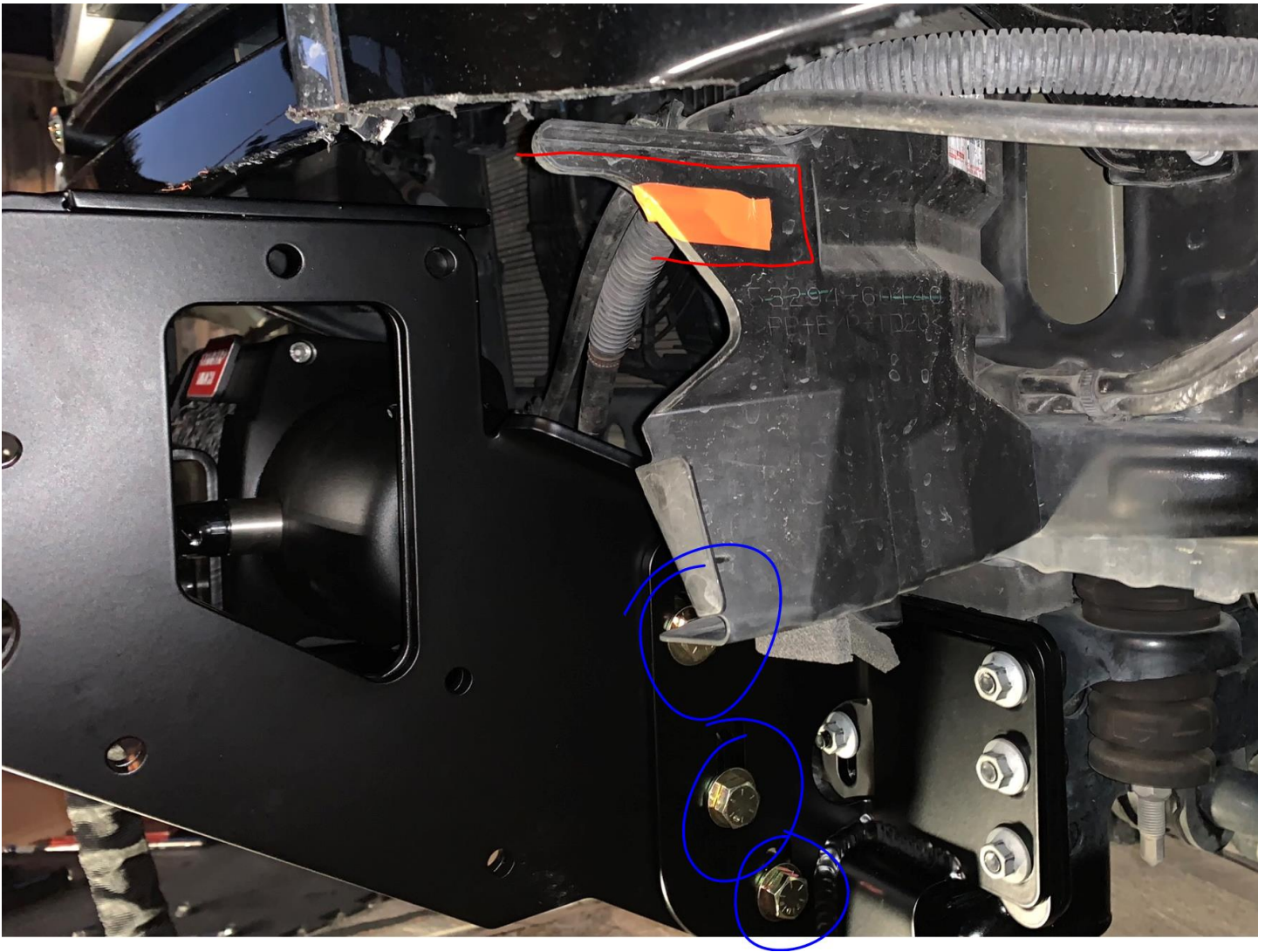
- Make sure all recovery point nuts are tightened
- Lift the center bumper section onto the front Recovery Points and slide back into place. The center section has lips on both sides that will rest on top of the Recovery Points. Once you have both lips aligned on the points, you can slide the entire section back into place.
- Insert 1/2" bolts through the recovery points and center section to lock everything into place



- Make sure six 1/2" bolts (3 on each side) are inserted and tightened
- Extend reference line over chrome grill sections and trim off



- Notch shroud on driver's side to allow wing to be installed (red section below). Leave upper section of shroud to support wiring.



- Passenger side: remove entire trans cooler shroud (to be installed later).



#### 9) Mount wings

- Note: wings connect to center section with Stainless Steel 5/16 nuts and bolts



- Lift wing into place and temporarily secure to center section. Wing will fit over bumper trim, but this will allow you to mark the plastic for trimming



- You should now have enough room to align the wings so the tops are flat to the center section.
- Install the two wing caps over the joints. Look closely and you'll see that one side of the plate is beveled. This is the top.
- **PICTURE**

10) FINAL TRIM – 2 OPTIONS. STRAIGHT OR ANGLE



- 11) BOLT TORQUES
- 12) INSTALL LIGHTS, PARKING SENSORS
- 13) Trim factory skids if you're using a lower radiator plate:



CENTER SECTION

