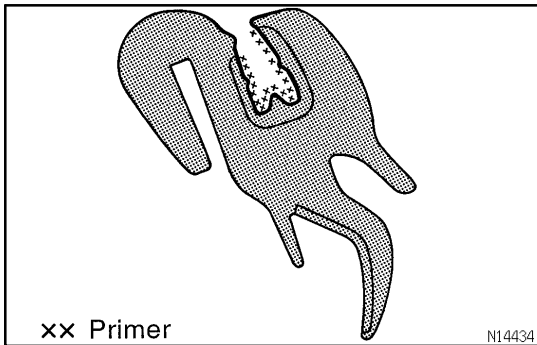


## INSTALLATION

### 1. CLEAN BODY AND GLASS

Using a cleaner, clean the weatherstrip contacting surface of the body and the glass.



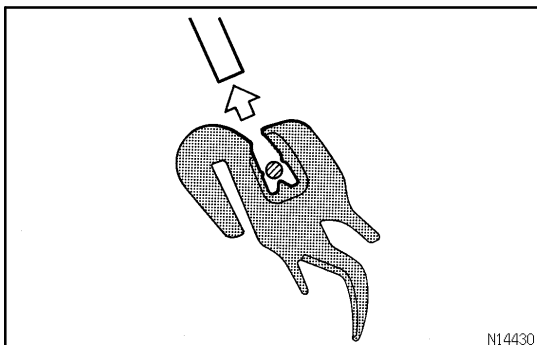
### 2. INSTALL WEATHERSTRIP

- (a) Apply primer to the weatherstrip on the contact surface with glass as shown in the illustration.

#### NOTICE:

**Let the primer coating dry for 3 minutes or more.**

**PRIMER: Sunstar-9002 T or equivalent**

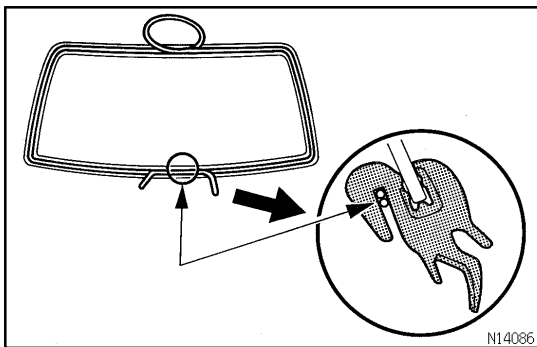


- (b) Cut off the tip of the cartridge nozzle. Fill the cartridge with adhesive.

- (c) Apply adhesive to the weatherstrip on the glass edge retaining surface as shown in the illustration.

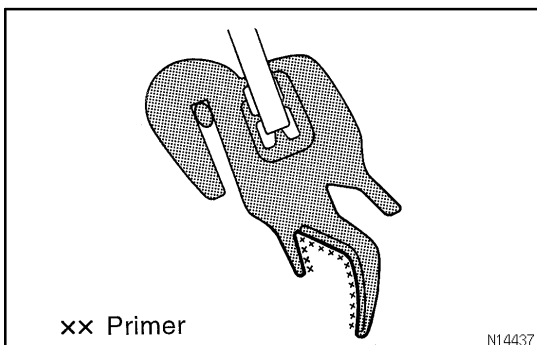
**ADHESIVE: Sikaflex-256 HV or equivalent**

- (d) Install the weatherstrip to the glass.  
(e) Clean the weatherstrip.



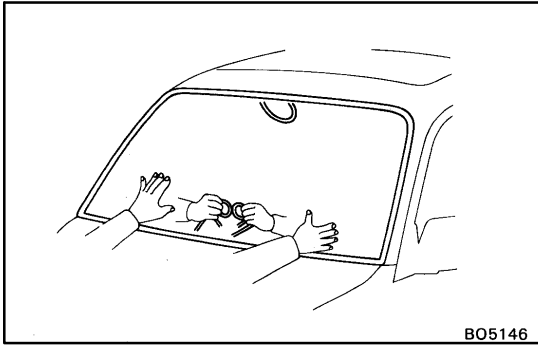
### 3. INSTALL GLASS

- (a) Apply a working cord along the weatherstrip groove, as shown in the illustration.

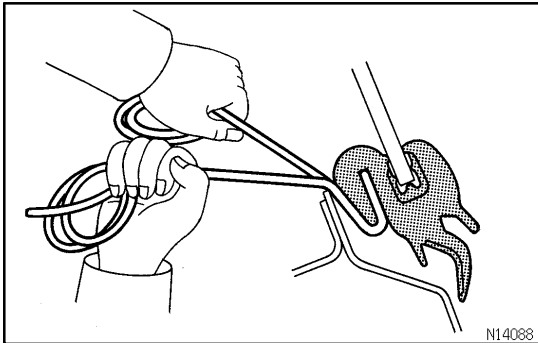


- (b) Apply primer to the weatherstrip on the surface with body as shown in the illustration.

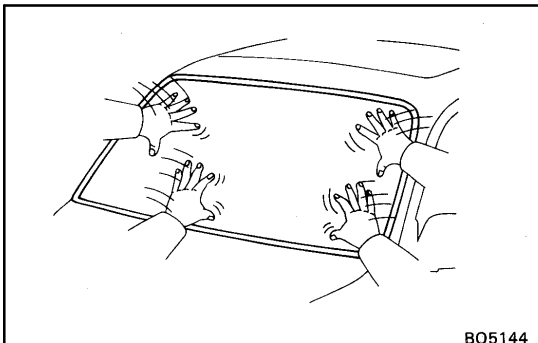
**PRIMER: Sunstar-9002 T or equivalent**



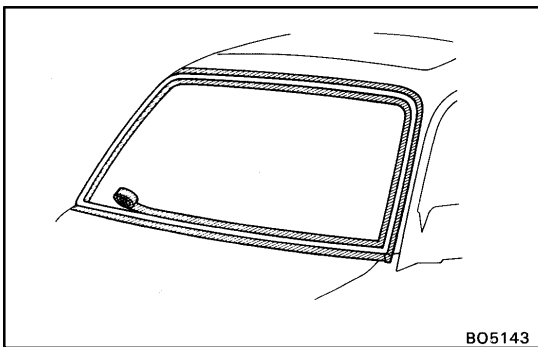
- (c) Begin installation in the middle of the lower part of the glass.
- (d) Hold the glass in position on the body.



- (e) From the inside, pull off one cord at an angle so it pulls the lip over the flange. From the outside, press the glass along the weatherstrip until the glass is installed.

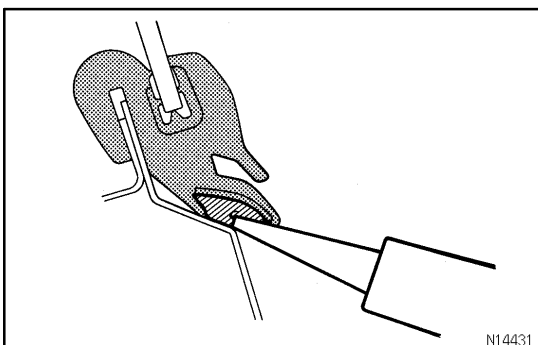


- (f) To make the glass fit snugly, tap from the outside with your open hand.



#### 4. APPLY ADHESIVE

- (a) Put masking tape around the weatherstrip to protect the paint and the glass.



- (b) Cut off the tip of the cartridge nozzle. Fill the cartridge with adhesive.
- (c) Lift the lip of the weatherstrip (with hand) and fill adhesive into the clearance.

**ADHESIVE: Sikaflex-256HV or equivalent**

#### 5. CLEANING SEALER SURFACE

- (a) Apply auto glass sealer dry, remove the masking tape.

**HINT:**

The auto glass sealer will harden in about 15 hours.

- (b) Clean off the sealer oozing out from the masking tape with a clean rag saturated in cleaner.

**6. INSPECT FOR LEAKS AND REPAIR**

- (a) Do a leak test.
- (b) Seal any leaks with auto glass sealer.

**Part No. 08833-00030 or equivalent**

**7. INSTALL THESE PARTS:**

- (a) Roof headlining
- (b) Front pillar garnishes
- (c) Assist grips
- (d) Sun visors and holders
- (e) Accessory meter and roof console meter
- (f) Inner rear view mirror
- (g) Cowl louver
- (h) Wiper arms

**Torque: 20 N·m(205 kgf·cm, 15 ft·lbf)**

- (i) Hood

**Torque: 18 N·m(185 kgf·cm, 13 ft·lbf)**

**8. ADJUST HOOD (See page [BO-8](#))**