

United States Department of Agriculture Forest Service

MONTANA

2017

America's Great Outdoors

Motor Vehicle Use Map

VICINITY MAP

Motor Vehicle Use Map

VICINITY MAP

CUSTER GALLATIN NATIONAL FOREST SUPERVISOR'S OFFICE

BOZEMAN RANGER DISTRICT

YELLOWSTONE RANGER DISTRICT

GARDINER RANGER DISTRICT

HEBGEN LAKE RANGER DISTRICT

BLANKET STATEMENTS FOR TRAVEL MANAGEMENT.

● In areas along designated motor vehicle routes where general dispersed camping with motor vehicles is not allowed, a small number of designated dispersed campsites have been marked on the ground. In these designated dispersed camp sites, the access road to the site and the site itself are only open to motor vehicles during the same season of use indicated for the adjacent road or trail.

● There are numerous short designated motor vehicle routes around the forest that are sometimes too small to display. These routes are signed on the ground with route numbers. If they are too small to display on the MVUM, they are not referenced on the route table. The seasonal restriction for the short spur is the same as its adjacent primary access route.

● On the Custer Gallatin National Forest, designated motorized trails open to wheeled vehicles less than 50 inches in width, are ONLY open to OHVs and MOTORCYCLES that meet the following criteria:

OHVs are defined as: motorized, wheeled trail vehicles that are less than 50 inches in width at the widest point on the vehicle.

Motorcycles are defined as: motorized, wheeled trail vehicles that are less than 50 inches in width at the widest point on the vehicle, with a maximum of two wheels in-line with the direction of travel.

treadlightly!

Travel and recreate with minimum impact.

Respect the environment and the rights of others.

Educate yourself plan and prepare before you go.

Allow for future use of the outdoors by leaving it better than you found it.

Discover the rewards of responsible recreation.

For more information on Tread Lightly!, go to www.treadlightly.org or call 1-800-966-9900.

In accordance with Federal civil rights law and U.S. Department of Agriculture (USDA) civil rights regulations and policies, the USDA, its Agencies, offices, and employees, and institutions participating in or administering USDA programs are prohibited from discriminating based on race, color, national origin, religion, sex, gender identity (including gender expression), sexual orientation, disability, age, marital status, family/parental status, income derived from a public assistance program, political beliefs, or reprisal or retaliation for prior civil rights activity, in any program or activity conducted or funded by USDA (not all bases apply to all programs). Remedies and complaint filing deadlines vary by program or incident.

Persons with disabilities who require alternative means of communication for program information (e.g., Braille, large print, audiotape, American Sign Language, etc.) should contact the responsible Agency or USDA's TARGET Center at (202) 720-2600 (voice and TTY) or contact USDA through the Federal Relay Service at (800) 877-8339. Additionally, program information may be made available in languages other than English.

To file a program discrimination complaint, complete the USDA Program Discrimination Complaint Form, AD-3027, found online at http://www.ascr.usda.gov/complaint_filing_cust.html and at any USDA office or write a letter addressed to USDA and provide in the letter all of the information requested in the form. To request a copy of the complaint form, call (866) 632-9992. Submit your completed form or letter to USDA by: (1) mail, U.S. Department of Agriculture, Office of the Assistant Secretary for Civil Rights, 1400 Independence Avenue, SW, Washington, D.C. 20250-9410; (2) fax: (202) 696-7442; or (3) email: program.intake@usda.gov.

USDA is an equal opportunity provider, employer, and lender.

PURPOSE AND CONTENTS OF THIS MAP

OPERATOR RESPONSIBILITIES

Operating a motor vehicle on National Forest System roads, National Forest System trails, and in areas on National Forest System lands carries a greater responsibility than operating that vehicle in a city or other developed setting. Not only must you know and follow all applicable traffic laws, you need to show concern for the environment, as well as other forest users. The misuse of motor vehicles can lead to the temporary or permanent closure of any designated road, trail, or area. As a motor vehicle operator, you are also subject to State traffic law, including State requirements for licensing, registration, and operation of the vehicle in question.

Motor vehicle use, especially off-highway vehicle use, involves inherent risks that may cause property damage, serious injury, and possibly death to participants. Drive cautiously and anticipate rough surfaces and features, such as snow, mud, vegetation, and water crossings common to remote driving conditions. By your participation, you voluntarily assume full responsibility for these damages, risks, and dangers. Take care at all times to protect yourself and those under your responsibility.

Much of the Custer Gallatin National Forest is remote. Medical assistance may not be readily available. Cellular telephones do not work in many areas of the Custer Gallatin National Forest. Take adequate food, water, first-aid supplies, and other equipment appropriate for the conditions and expected weather.

ALWAYS REMEMBER TO RESPECT PRIVATE LAND. PROTECT YOUR PRIVILEGE. STAY ON DESIGNATED ROADS AND TRAILS AND IN DESIGNATED AREAS.

Read and understand this map in its entirety. If you have questions please contact the CUSTER GALLATIN NATIONAL FOREST for clarification.

As a motor vehicle operator on a National Forest System road, trail, or area, you must comply with this map, as well as all Federal, State, and local laws and regulations. Compliance with these rules is your responsibility.

EXPLANATION OF LEGEND ITEMS

Roads Open to Highway Legal Vehicles Only:

These roads are open only to motor vehicles licensed under State law for general operation on all public roads within the State.

Roads Open to All Vehicles:

These roads are open to all motor vehicles, including smaller off highway vehicles that may not be licensed for highway use (but not to oversize or overweight vehicles under State traffic law).

Trails Open to Motorcycles Only:

These trails are open only to motorcycles. Sidecars are not permitted.

Trails Open to Wheeled Vehicles 50 inches or Less in Width

These trails are open only to wheeled, motor vehicles less than 50 inches in width at the widest point on the vehicle.

Seasonal Designation:

This symbol, used in conjunction with one of the other road or trail symbols, indicates that the road or trail is open only during certain portions of the year. Refer to the Seasonal and Special Designation Table for further instructions.

Dispersed Camping:

This symbol is used along with a designated road or trail to indicate that limited cross-country motor vehicle use is allowed within 300 feet of that route, solely for the purpose of dispersed camping.

Motorized Trail Access:

This symbol indicates a trail head for access to a motorized route. Not all motorized routes have trail heads and those that do may range from primitive to developed.

LEGEND

— Roads Open to Highway Legal Vehicles Only

— Roads Open to All Vehicles

..... Trails Open to Motorcycles Only

— Trails Open to wheeled Vehicles 50" or Less in Width

..... Dispersed Camping

Seasonal Designation

Interstate

Other Public Roads

Other Public Trails

Motorized Trail Access

FS Campgrounds

Peaks

Forest or Unit Boundary

National Forest System Lands

Non-National Forest System Lands within this National Forest

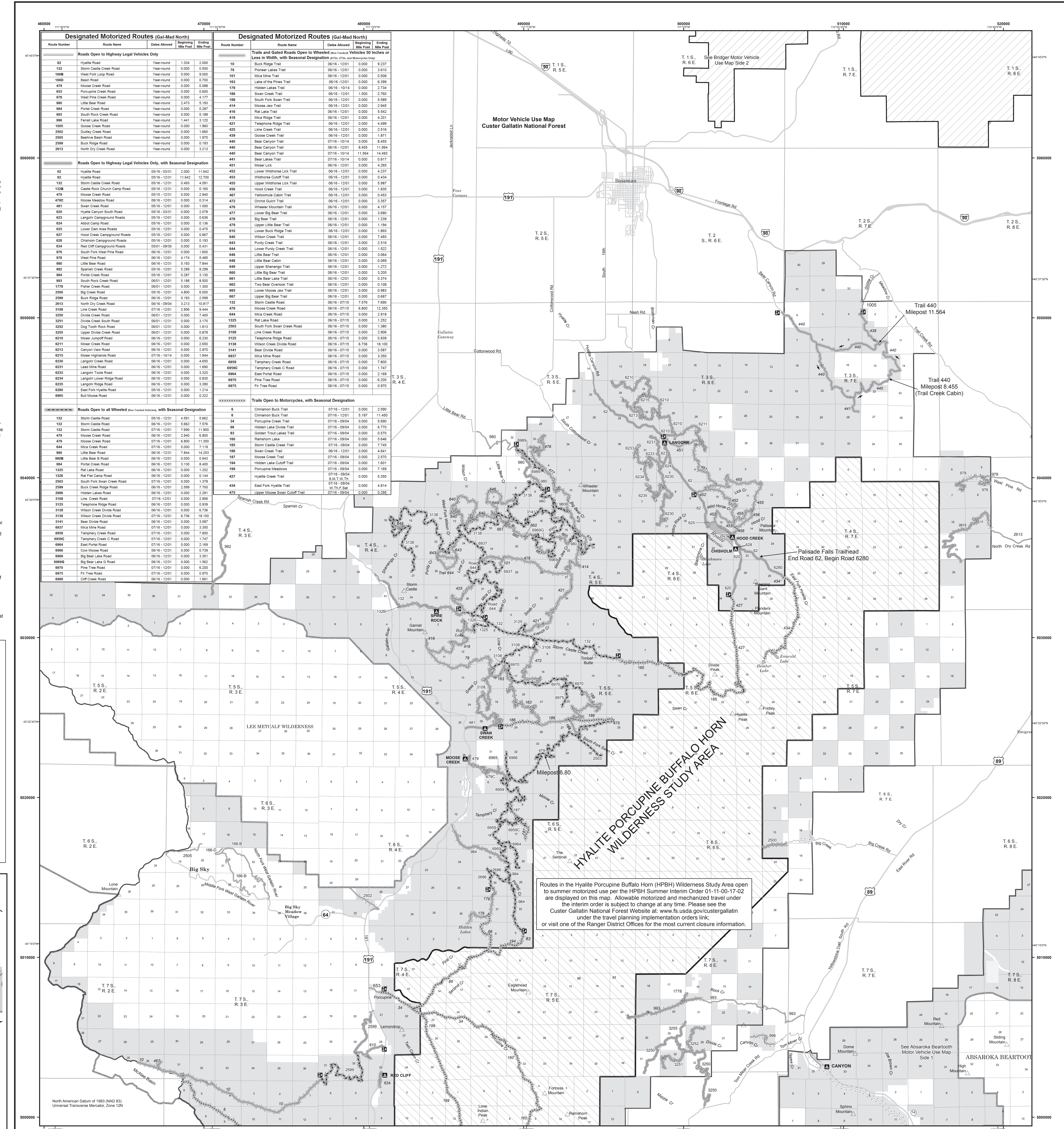
Wilderness

Lakes

0 0.5 1 2 3 4 Miles

GALLATIN MAP SIDE 1

HEBGEN LAKE RANGER DISTRICT MAP SIDE 2



Routes in the Hyalite Porcupine Buffalo Horn (HPBH) Wilderness Study Area open to summer motorized use per the HPBH Summer Interim Order 01-11-00-17-02 are displayed on this map. Allowable motorized and mechanized travel under the interim order is subject to change at any time. Please see the Custer Gallatin National Forest Website at: www.usda.gov/custergallatin under the travel planning implementation orders link, or visit one of the Ranger District Offices for the most current closure information.