

# FAN GUARD INSTALL GUIDE

Tools needed:

¼" POWER DRILL

5/64" DRILL BIT

1/8" DRILL BIT

#1 PHILIPS SCREW DRIVER

MEASUREING RULE

Drum sander, dremel tool or similar

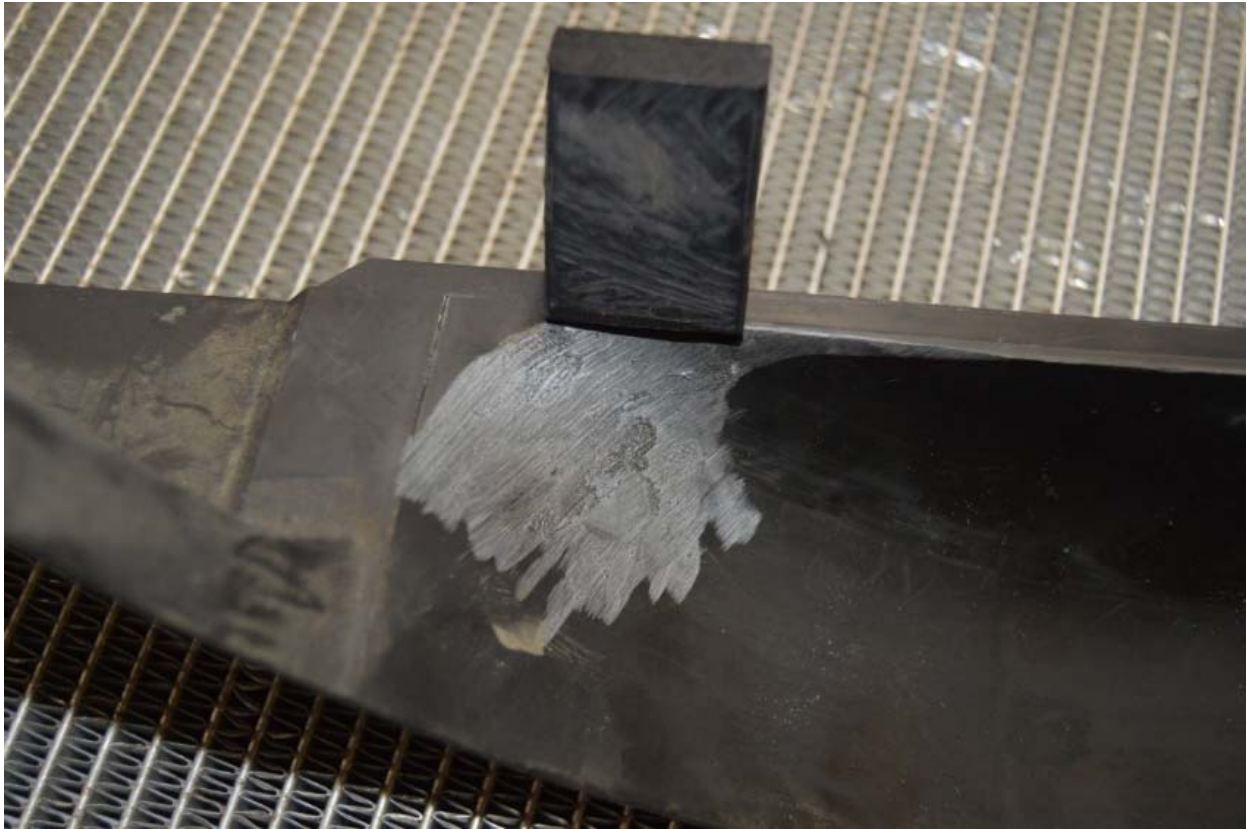
1. Remove the fan shroud
2. Locate the position of the guard by spacing it ¾" away from the casting marks indicated by the arrow



3. Using the 5/64" drill bit drill two holes from under the shroud lip into the guard.
4. With the guard removed use the 1/8" drill bit to increase the hole size from 5/64" to 1/8" in the shroud only!
5. Using the supplied #4x1/2" wood screws secure the guard in place to the shroud.



6. Using a drill drum sander or Dremel tool sand the shroud along the front edge of the guard toward the casting marks.



7. Reinstall fan shroud