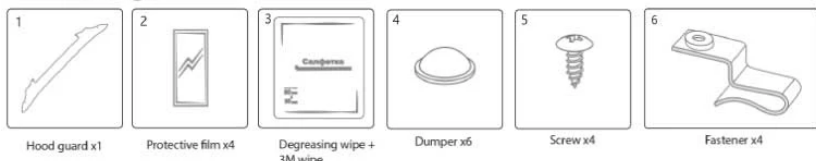


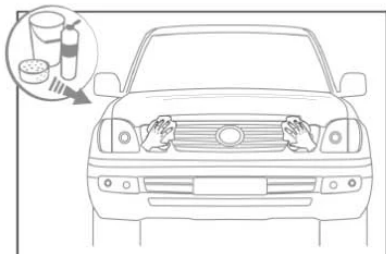
## Package



## Step 1

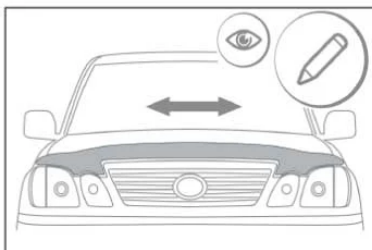
Unpack the hood guard. Take off packaging film out of the item. Check all fasten elements and their types according to the manual instructions.

## Step 2



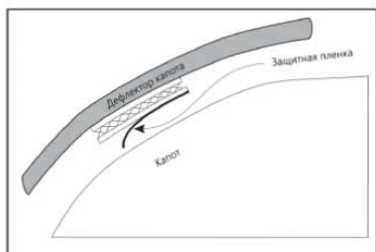
Open the hood, remove dirt and dust.

## Step 3



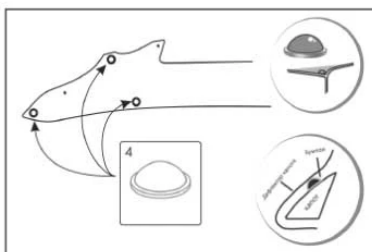
Attach a hood guard to the hood to determine fastener positions

## Step 4



Before installing the hood guard, degrease the contact areas of the Dual lock fastener with the hood, peel off the protective film of the fastener and install the hood guard firmly pressing the bonding points.

## Step 5



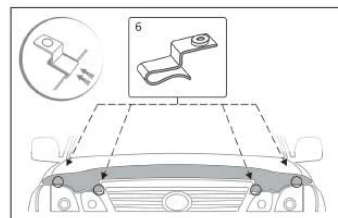
install protective dumper on the skim surface of the hood, according to the marks indicated in the figure.

## Step 6



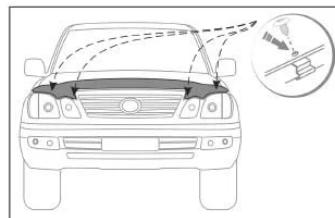
To avoid friction of the mounts on the car surface, please degrease places for mounts with the degreasing wipe and stick on the protection film

## Step 7



Mount fastener

## Step 8



Fix the hood guard by screws



Do not use  
polish contain-  
ing abrasive



Do not slam the hood and  
do not subject the  
product to severe kinks or  
mechanical stress, testing  
for strength.

To remove the hood guard, perform all the steps in reverse order. Warranty: Warranty obligations for the product come into force in case of detection of defects associated with materials, of which it is made. The warranty does not apply if problems arise due to improper installation, mechanical damage, misuse, neglect, unauthorized changes in the design or repair of the product. The seller and the manufacturer undertakes to replace the defective product. Neither the seller nor the manufacturer is liable for any damage, damage or loss, directly or indirectly related with the failure or inability to use the product and its suitability for intended use, as well as accept risk and liability associated with its operation. The foregoing can not be changed, with the exception of cases of making changes to the signed by representatives of the seller and manufacturer.

**ONAC**