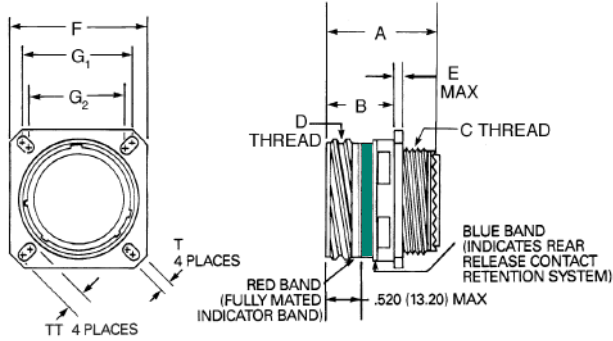


Wall Mount Receptacle

D38999/20
KJA0

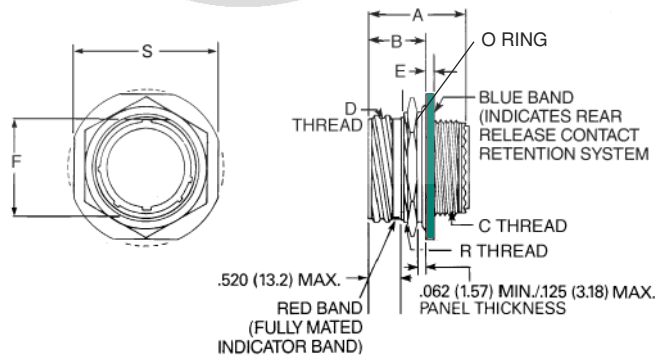


| Shell Size | | Overall Length | Front Flange to Mating Face B | Rear Metric Thread (Plated) C | Mating Thread Class 2A (Plated) D | Flange Thickness E | Flange F ±0.3 | Outer Hole G1 | Inner Hole G2 | T | TT |
|------------|------|----------------|-------------------------------|-------------------------------|-----------------------------------|--------------------|---------------|---------------|---------------|------|------|
| D38999/20 | KJA0 | A max | +1.4/0.0 | | | | | | | | |
| A | 9 | 31.5 | 19.5 | M12x1.0-6g 0.100R | 5/8-.1P-.3L-TS | 2.5 | 23.8 | 18.26 | 15.09 | 3.25 | 5.49 |
| B | 11 | 31.5 | 19.5 | M15x1.0-6g 0.100R | 3/4-.1P-.3L-TS | 2.5 | 26.2 | 20.62 | 18.26 | 3.25 | 4.93 |
| C | 13 | 31.5 | 19.5 | M18x1.0-6g 0.100R | 7/8-.1P-.3L-TS | 2.5 | 28.6 | 23.01 | 20.62 | 3.25 | 4.93 |
| D | 15 | 31.5 | 19.5 | M22x1.0-6g 0.100R | 1-.1P-.3L-TS | 2.5 | 31.0 | 24.61 | 23.01 | 3.25 | 4.39 |
| E | 17 | 31.5 | 19.5 | M25x1.0-6g 0.100R | 1 3/16-.1P-.3L-TS | 2.5 | 33.3 | 26.97 | 24.61 | 3.25 | 4.93 |
| F | 19 | 31.5 | 19.5 | M28x1.0-6g 0.100R | 1 1/4-.1P-.3L-TS | 2.5 | 36.5 | 29.36 | 26.97 | 3.25 | 4.93 |
| G | 21 | 31.5 | 18.7 | M31x1.0-6g 0.100R | 1 3/8-.1P-.3L-TS | 3.2 | 39.7 | 31.75 | 29.36 | 3.25 | 4.93 |
| H | 23 | 31.5 | 18.7 | M34x1.0-6g 0.100R | 1 1/2-.1P-.3L-TS | 3.2 | 42.9 | 34.92 | 31.75 | 3.91 | 6.15 |
| J | 25 | 31.5 | 18.7 | M37x1.0-6g 0.100R | 1 5/8-.1P-.3L-TS | 3.2 | 46.0 | 38.10 | 34.92 | 3.91 | 6.15 |

See page 257 for Nut Plates and Sealing Screws.

Jam Nut Receptacle

D38999/24
KJA7



| Shell Size | | Overall Length | Front Flange to Mating Face B | Rear Metric Thread (Plated) C | Mating Thread Class 2A (Plated) D | Flange Thickness E +0.3-0.1 | Jam Nut Thread R | F +.1-.25 | Flange Wrench Flats S ±0.4 |
|------------|------|----------------|-------------------------------|-------------------------------|-----------------------------------|-----------------------------|------------------|-----------|----------------------------|
| D38999/24 | KJA7 | A max | B max | | | | | | |
| A | 9 | 31.57 | 22.12 | M12x1.0-6g 0.100R | 5/8-.1P-.3L-TS | 2.6 | M17x1-6g 0.100R | 16.50 | 27.0 |
| B | 11 | 31.57 | 22.12 | M15x1.0-6g 0.100R | 3/4-.1P-.3L-TS | 2.6 | M20x1-6g 0.100R | 17.07 | 31.8 |
| C | 13 | 31.57 | 22.3 | M18x1.0-6g 0.100R | 7/8-.1P-.3L-TS | 2.6 | M25x1-6g 0.100R | 23.82 | 34.9 |
| D | 15 | 31.57 | 22.3 | M22x1.0-6g 0.100R | 1-.1P-.3L-TS | 2.6 | M28x1-6g 0.100R | 27.00 | 38.1 |
| E | 17 | 31.57 | 22.3 | M25x1.0-6g 0.100R | 1 3/16-.1P-.3L-TS | 2.6 | M32x1-6g 0.100R | 30.14 | 41.3 |
| F | 19 | 31.57 | 22.3 | M28x1.0-6g 0.100R | 1 1/4-.1P-.3L-TS | 3.4 | M35x1-6g 0.100R | 33.32 | 46.0 |
| G | 21 | 31.57 | 22.3 | M31x1.0-6g 0.100R | 1 3/8-.1P-.3L-TS | 3.4 | M38x1-6g 0.100R | 36.50 | 49.2 |
| H | 23 | 31.57 | 22.3 | M34x1.0-6g 0.100R | 1 1/2-.1P-.3L-TS | 3.4 | M41x1-6g 0.100R | 38.67 | 52.4 |
| J | 25 | 31.57 | 22.3 | M37x1.0-6g 0.100R | 1 5/8-.1P-.3L-TS | 3.4 | M44x1-6g 0.100R | 42.85 | 55.4 |

Dimensions in mm except Mating Thread

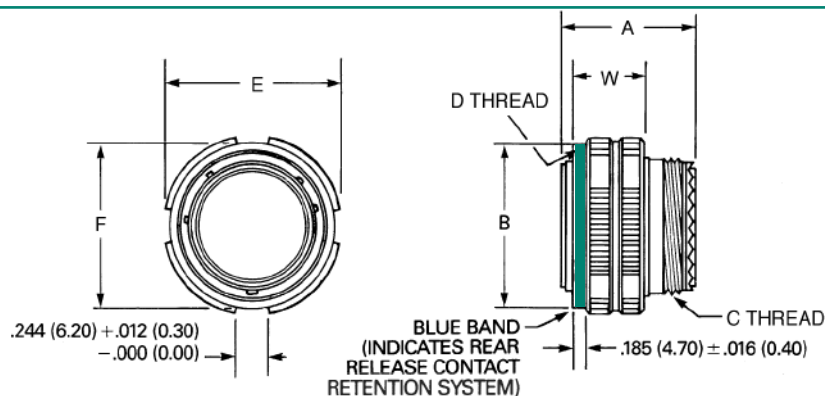
For price & delivery: 800-642-8750 • For tech support: 800-523-0727 • www.PeiGenesis.com

Specifications subject to change.

Dimensions

Straight Plug Grounded

D38999/26
KJA6

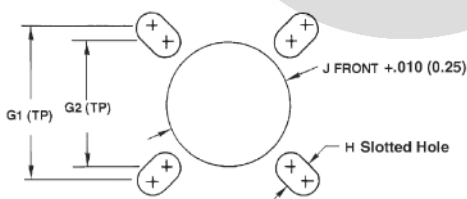


| Shell Size | | Overall length | B | Rear Metric Thread (Plated) C | Mating Thread Class 2B (Plated) D | Overall Diameter | F MAX | W |
|------------|------|----------------|--------|-------------------------------|-----------------------------------|------------------|--------|-----------|
| D38999/26 | KJA6 | A MAX | + .2-0 | | | E MAX | | + .2/- .1 |
| A | 9 | 31.34mm | 18.4mm | M12x1.0-6g 0.100R | 5/8-.1P-.3L-TS | 21.8mm | 19.0mm | 19.3mm |
| B | 11 | 31.34mm | 21.1mm | M15x1.0-6g 0.100R | 3/4-.1P-.3L-TS | 25.0mm | 21.9mm | 19.3mm |
| C | 13 | 31.34mm | 25.4mm | M18x1.0-6g 0.100R | 7/8-.1P-.3L-TS | 29.4mm | 26.1mm | 19.3mm |
| D | 15 | 31.34mm | 28.7mm | M22x1.0-6g 0.100R | 1-.1P-.3L-TS | 32.5mm | 29.3mm | 19.3mm |
| E | 17 | 31.34mm | 32.2mm | M25x1.0-6g 0.100R | 1 3/16-.1P-.3L-TS | 35.7mm | 32.8mm | 19.3mm |
| F | 19 | 31.34mm | 34.9mm | M28x1.0-6g 0.100R | 1 1/4-.1P-.3L-TS | 38.5mm | 35.5mm | 19.3mm |
| G | 21 | 31.34mm | 38.1mm | M31x1.0-6g 0.100R | 1 3/8-.1P-.3L-TS | 41.7mm | 38.7mm | 19.3mm |
| H | 23 | 31.34mm | 41.1mm | M34x1.0-6g 0.100R | 1 1/2-.1P-.3L-TS | 44.9mm | 41.7mm | 19.3mm |
| J | 25 | 31.34mm | 44.3mm | M37x1.0-6g 0.100R | 1 5/8-.1P-.3L-TS | 48.0mm | 44.9mm | 19.3mm |

Dimensions in mm

Panel Cutouts

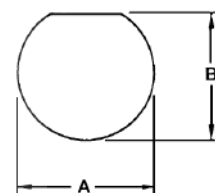
Wall Mount Receptacle



| Shell Size | | D38999/20 & KJA0 Wall Mount | | | |
|------------|-----|-----------------------------|---------------|---------------------------------------|----------------------|
| D38999 | KJA | G1 | G2 | H dia +.005 (.130) -.000 (.000) | Front Mount J MIN |
| A | 9 | .719 (18.26) | .594 (15.09) | .134 (3.40) | .626 (15.90) |
| B | 11 | .812 (20.62) | .719 (18.26) | .134 (3.40) | .751 (19.08) |
| C | 13 | .906 (23.01) | .812 (20.62) | .134 (3.40) | .876 (22.25) |
| D | 15 | .969 (24.61) | .906 (23.01) | .134 (3.40) | 1.001 (25.43) |
| E | 17 | 1.062 (26.97) | .969 (24.61) | .134 (3.40) | 1.188 (30.18) |
| F | 19 | 1.156 (29.36) | 1.062 (26.97) | .134 (3.40) | 1.251 (31.78) |
| G | 21 | 1.250 (31.75) | 1.156 (29.36) | .134 (3.40) | 1.376 (34.95) |
| H | 23 | 1.375 (34.93) | 1.250 (31.75) | .160 (4.06) | 1.511 (38.38) |
| J | 25 | 1.500 (38.10) | 1.375 (34.93) | .160 (4.06) | 1.626 (41.30) |

Dimensions in inches (mm)

Jam Nut Receptacle



| D38999/24 & KJA7 Jam Nut | |
|-----------------------------------|-----------------------------------|
| A +.010 (.025) -.000 (.000) | B +.000 (0.00) -.010 (.025) |
| .700 (17.78) | .670 (17.02) |
| .825 (20.96) | .770 (19.59) |
| 1.010 (25.65) | .955 (24.26) |
| 1.135 (28.83) | 1.085 (27.56) |
| 1.260 (32.01) | 1.210 (30.73) |
| 1.385 (35.18) | 1.335 (33.91) |
| 1.510 (38.35) | 1.460 (37.08) |
| 1.635 (41.53) | 1.585 (40.29) |
| 1.760 (44.70) | 1.710 (43.43) |

Panel Thickness

Wall Mount Receptacle

D38999/20 Rear Mount .125" (3.18) Max

Jam Nut Receptacle

D38999/24 Jam Nut
.125" (3.18) Max/.062" (1.57) Min